



3040P 10 cu ft POLY DUMP CART



**READ AND FOLLOW ALL SAFETY RULES AND OPERATING
INSTRUCTIONS BEFORE USING THIS EQUIPMENT**

Safety Rules



This is the safety alert symbol. It is used to alert you to potential personal injury hazards. Obey all safety messages that follow this symbol to avoid possible injury or death.

Read and understand all safety rules and operating instructions before using this tractor attachment.

Follow all safety rules and operating instructions provided by your vehicle's manufacturer when using attachment.

Never allow children or untrained persons to operate vehicle or attachment.

Do not exceed the vehicle manufacturer's towed weight limit.

Reduce vehicle speed and allow extra stopping distance when towing heavy loads.

Reduce vehicle speed and towed weight when operating on slopes.

Operate up and down slopes, never across the face of slopes.

Do not carry passengers on vehicle or attachment.

Avoid sudden turns or maneuvers.

Do not tow attachment on public roadways.

Do not remove warning decals from product.

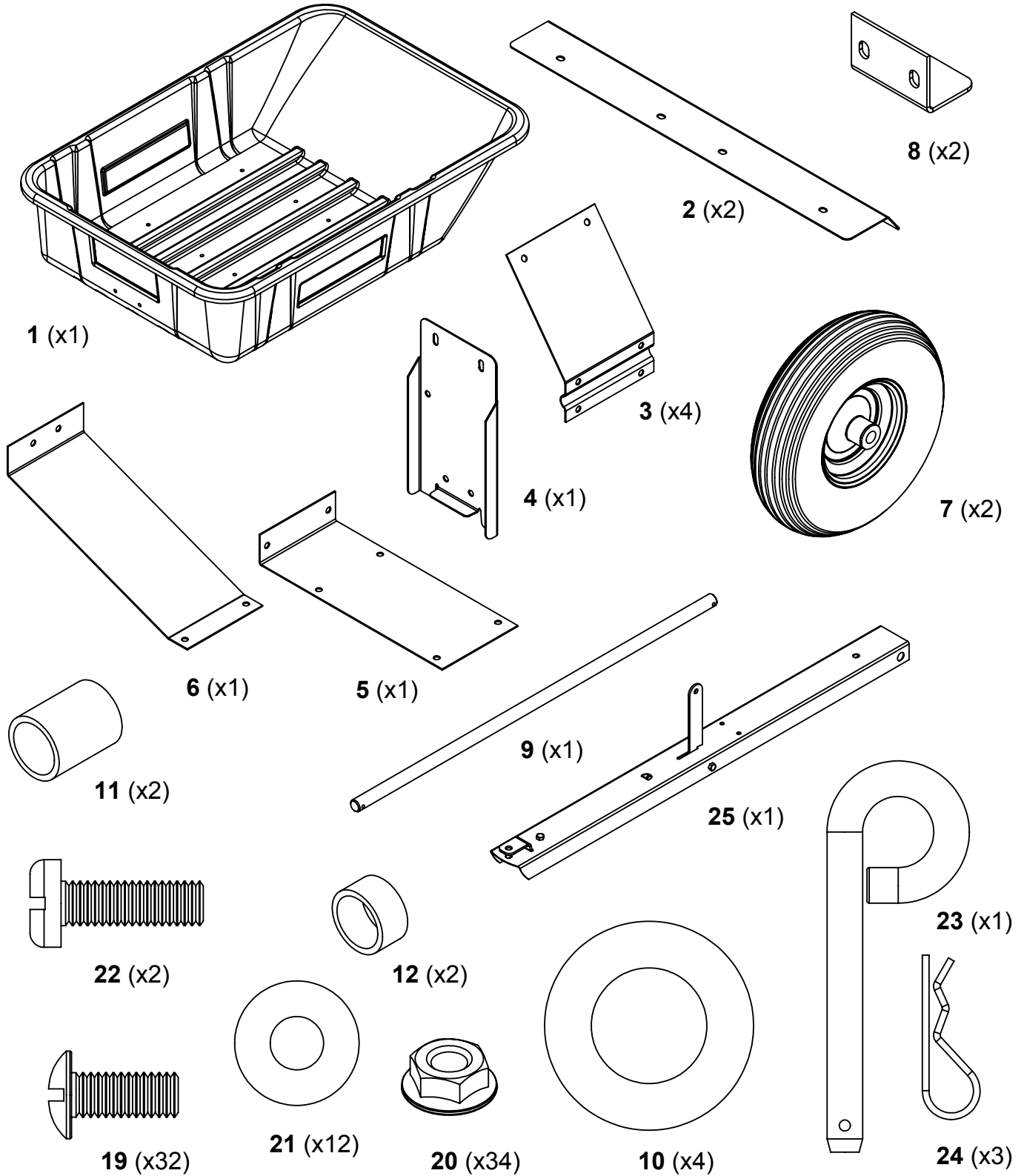
Check product for worn, loose, or damaged parts before each use. If any damage is present, repair the product before using.

Check product for loose or missing fasteners before each use. Tighten or replace fasteners as needed before using.

Do not exceed vehicle speed of 6 miles per hour when towing Dump Cart.

Do not exceed Dump Cart rated weight capacity of 325 pounds.

Carton Contents



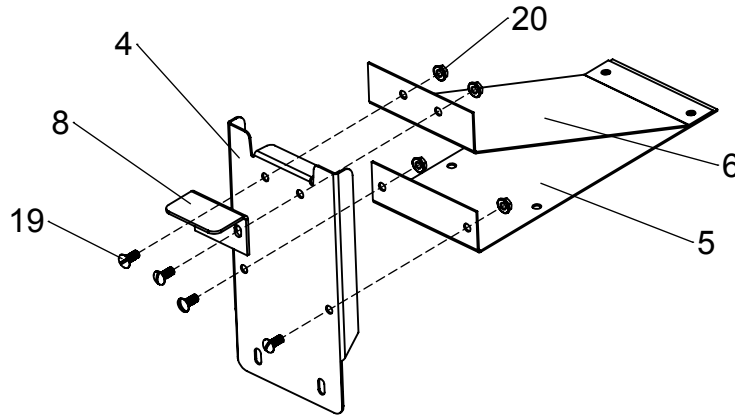
TOOLS REQUIRED FOR ASSEMBLY:

- Large Flat Screwdriver
- 1/2" Wrench or Socket

Assembly Instructions

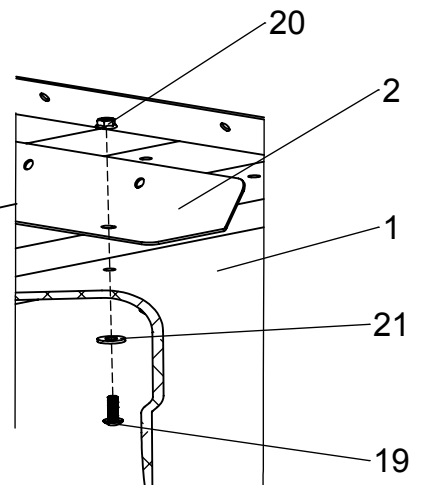
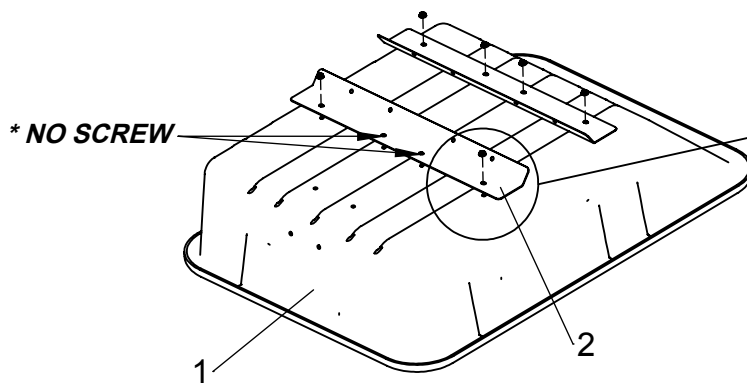
1

Attach Front Support and Latch Angle loosely to Brace Supports as shown using supplied hardware.



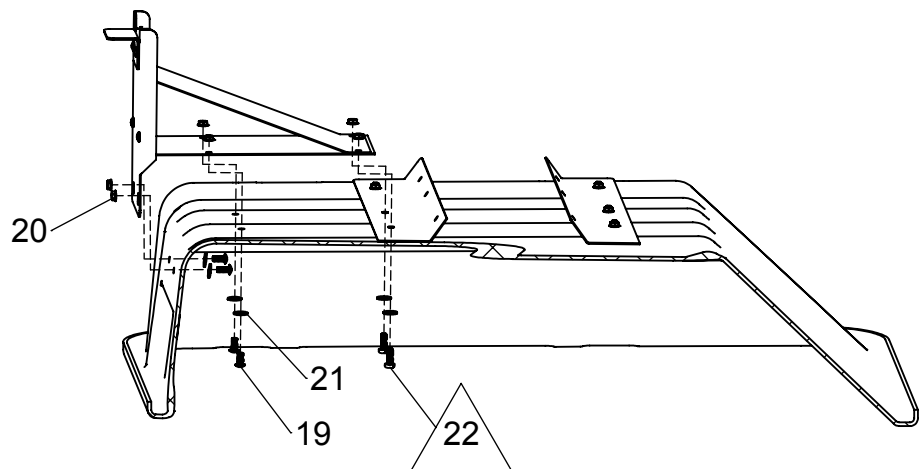
2

Attach Undercarriage Axle Supports loosely to body with hardware as shown.



3

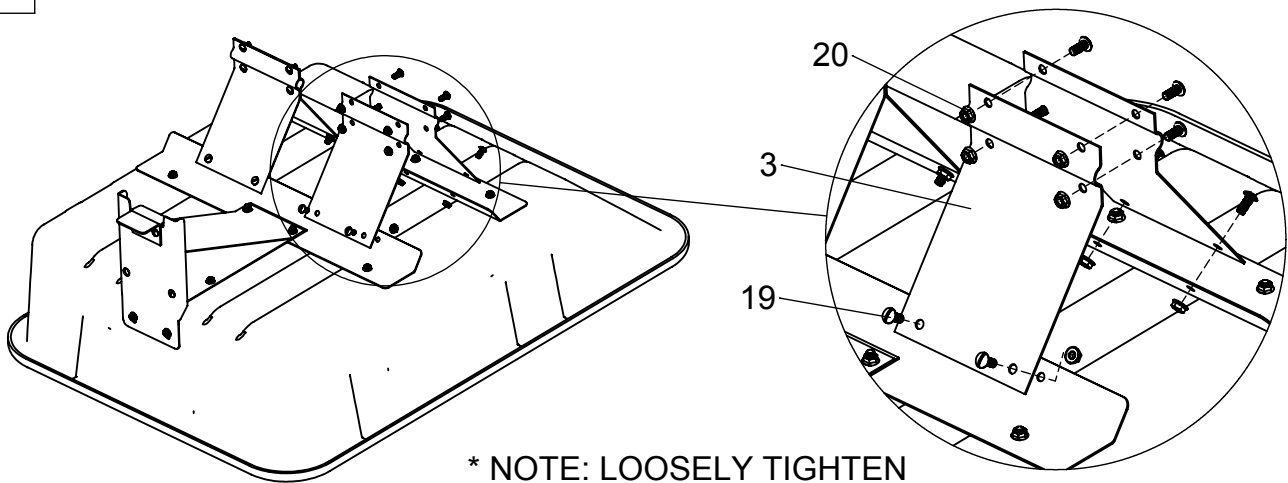
Attach Front Support Assembly loosely to body with hardware as shown.



Assembly Instructions

4

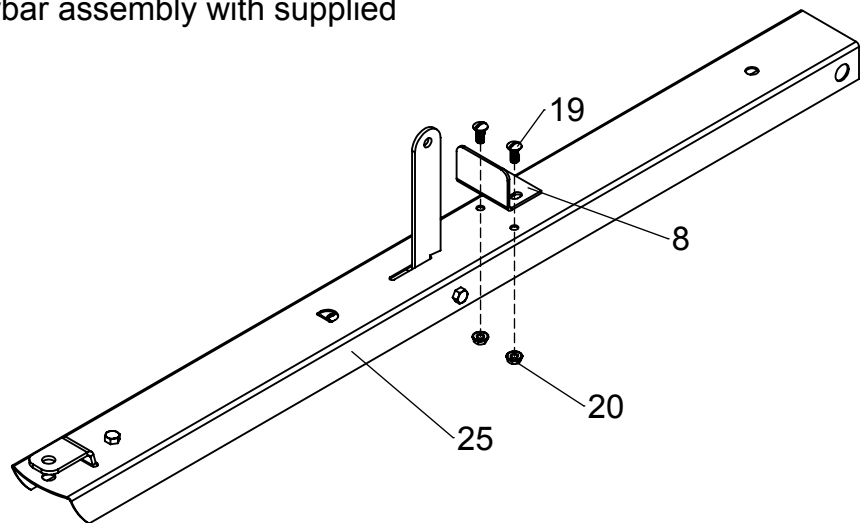
Attach two axle holders to the axle supports as shown using the supplied hardware



* NOTE: LOOSELY TIGHTEN BOLTS AT THIS TIME

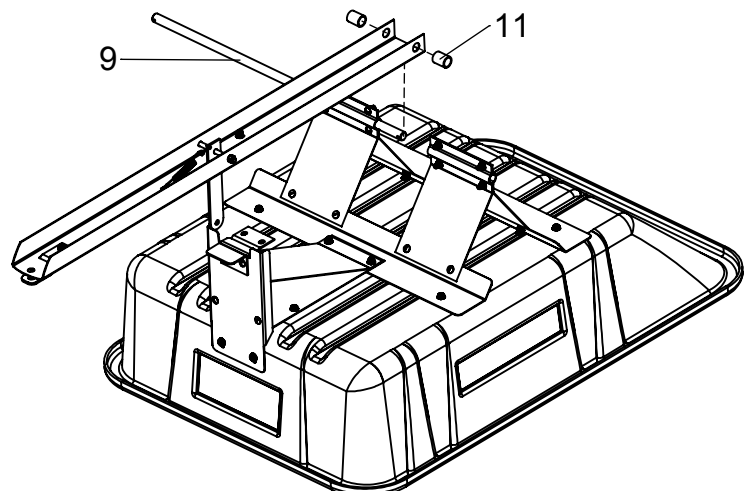
5

Attach latch angle to drawbar assembly with supplied hardware as shown



6

Insert axle into undercarriage halfway as shown. Attach spacer, drawbar assembly, and spacer

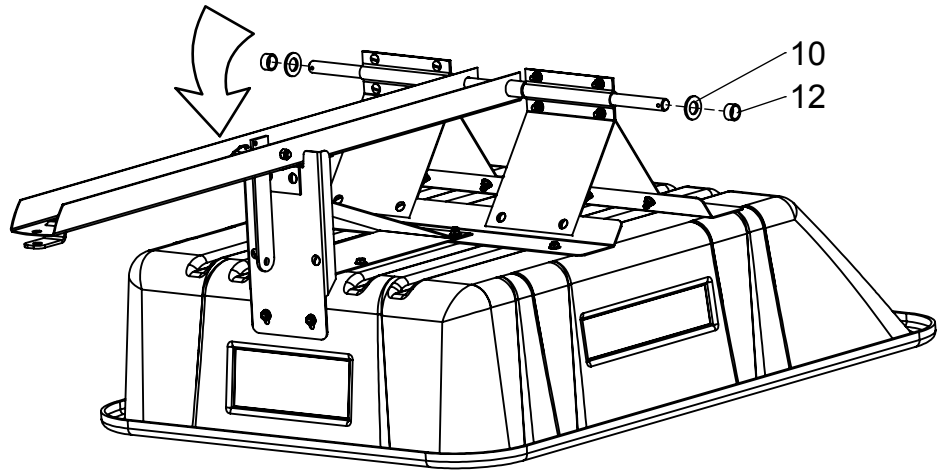


Assembly Instructions

7

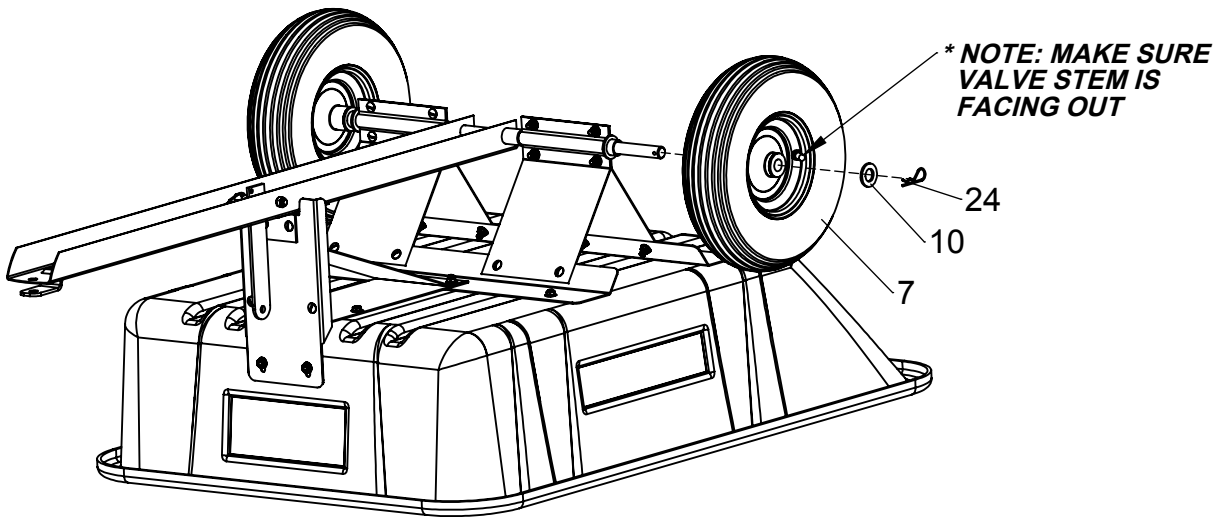
Slide axle completely through undercarriage. Align drawbar with the front support and pull handle to latch. Attach washers and spacers as shown.

*** NOTE: TIGHTEN ALL HARDWARE AT THIS TIME**



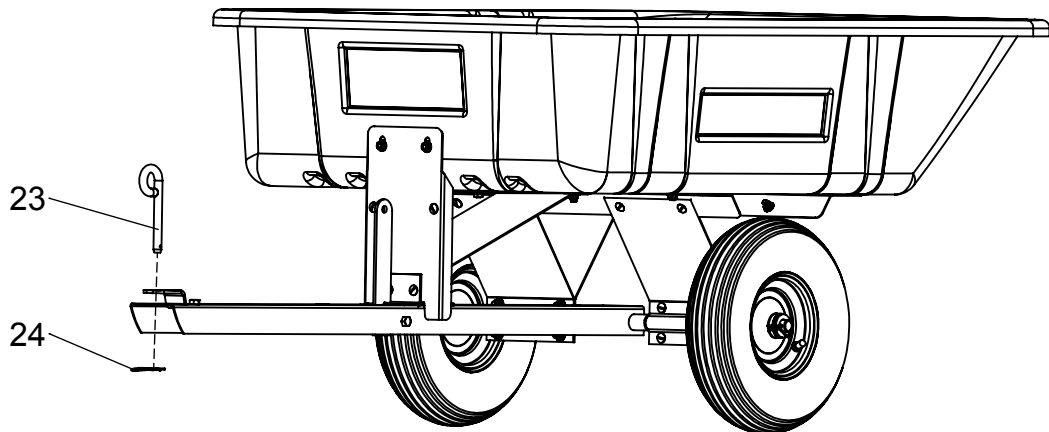
8

Slide wheels and washers onto axle and secure with hairpins as shown.



9

Install hitch pin and hairpin to secure to attachment vehicle.



Operating Instructions

Before Using Dump Cart:

1. Check tire pressure and inflate to 30 psi if needed.
2. Read all Safety Rules found on page 1.

How to Use Dump Cart:

1. Attach Dump Cart to your tractor using the supplied hitch pin.
2. Do not exceed 325 pounds when loading material into the cart body.
3. Distribute the weight of the load as evenly as possible in the cart body for best handling.
4. When hauling heavy loads, verify that your vehicle has adequate towing and braking capacity.
5. Do not exceed 6 miles per hour when towing Dump Cart.

How to Empty Dump Cart:

1. Pull hand lever forward to release the latch mechanism.
2. Angle cart body as desired to guide the material to preferred location.
3. Lower the body and guide the latch into the drawbar and relatch.

Periodic Maintenance:

- Tighten fasteners as needed before each use
- Check tire pressure before each use
- Inspect parts for damage and replace if necessary

Warranty

If this product fails due to a defect in material or workmanship within TWO YEARS from the date of purchase, we will at our option repair or replace it free of charge. This warranty excludes tires and wheels, which are expendable and become worn during normal use.

This warranty does not cover:

- Repairs necessary because of operator abuse or negligence.
- Equipment used for commercial or rental purposes.
- Paint that is worn or faded due to normal use or exposure.

To arrange for product repair call 1-800-652-2321, or return this product to place of purchase for replacement.

This warranty gives you specific legal rights, and you may also have other rights which may vary from state to state. This warranty applies only while this product is in use in the United States.

In the space below record the purchase date of your Dump Cart.

Model Number **3040P** _____

Purchase Date _____

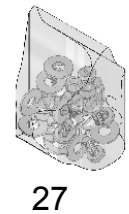
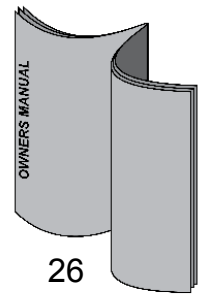
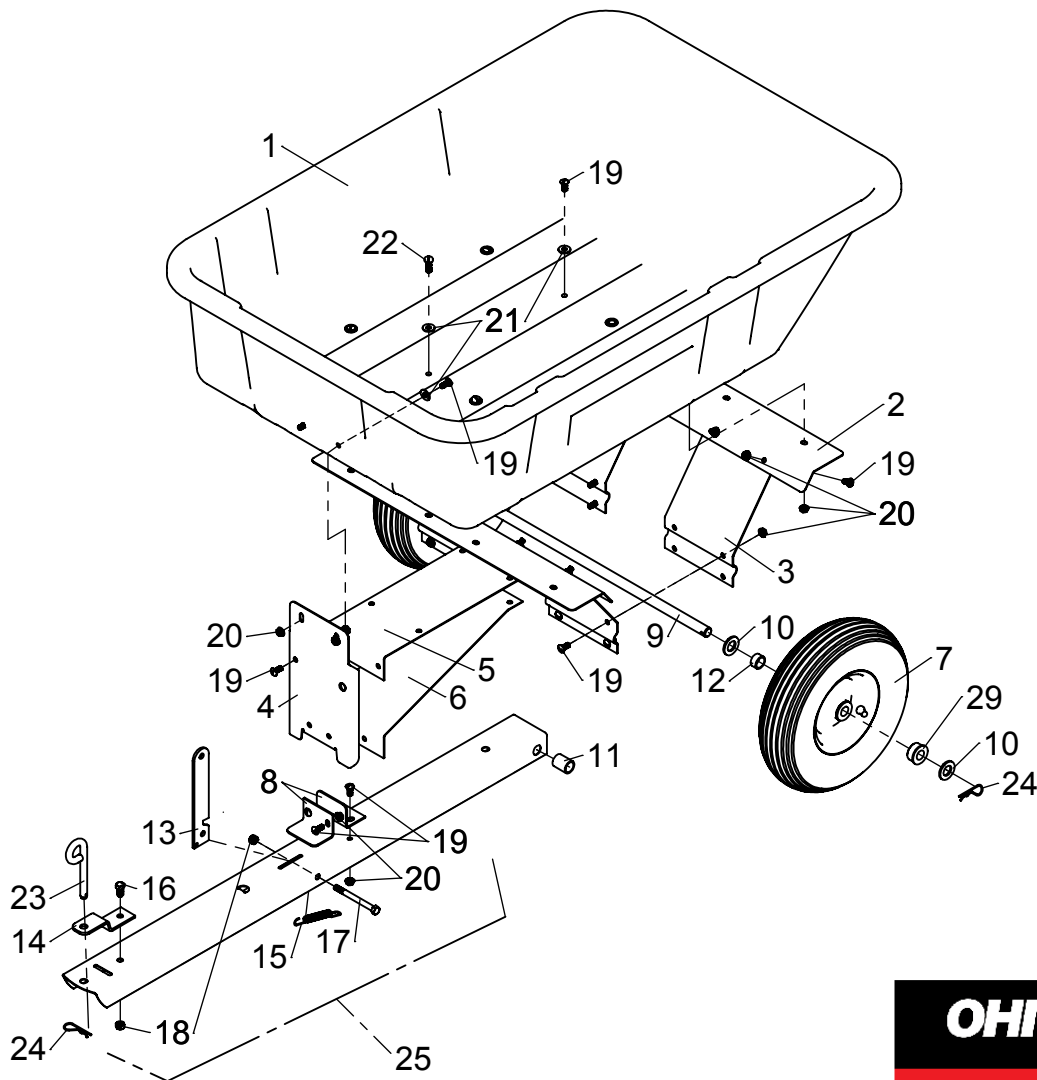
Keep this Owner's Manual and your receipt in a safe place for future reference.

After the two year warranty period all replacement parts may be ordered by calling **1-800-652-2321**.

When ordering replacement parts, always give the following information:

- Product **10 cu ft POLY DUMP CART** _____
- Model Number **3040P** _____
- Part Number _____
- Part Description _____

Repair Parts



ITEM	PART NO	DESCRIPTION	QTY	ITEM	PART NO	DESCRIPTION	QTY
1	6000180	CART BODY	1	16	300052	HEX BOLT, 3/8-16 X 3/4"	1
2	6000028	AXLE SUPPORT	2	17	300053	HEX BOLT, 3/8-16 X 4"	1
3	6000029	AXLE HOLDER	4	18	300061	HEX NUT, 3/8-16 C-LOCK	2
4	6000025	FRONT SUPPORT	1	19	300054	5/16-18 X 3/4" SLOTTED TRUSS	32
5	6000022	FRONT SUPPORT BRACE	1	20	6000418	5/16-18 SPINNER GRIP NUT	35
6	6000023	ANGULAR SUPPORT	1	21	3000711	WASHER, 5/16" USS	13
7	6000182	WHEEL (including bushings)	2	22	3000537	5/16-18x1" TRUSS HEAD BOLT	2
8	6000024	LATCH ANGLE	2	23	6000533	PIN, HITCH	1
9	300008	AXLE	1	24	300084	HAIRPIN COTTER PIN	3
10	3000721	WASHER, 3/4" SAE	4	25	6000020	DRAWBAR ASSEMBLY (incl. 13-18)	1
11	6000105	SPACER, 3/4" x 1.25"	2	26	6000181	OWNERS MANUAL	1
12	6000106	SPACER, 3/4" x 0.625"	2	27	6000108	HARDWARE BOLT BAG	1
13	401111	LATCH POST	1	28	300111	DECAL, OSI	2
14	401121	BRACKET, HITCH	1	29	6000812	KIT, 3/4" POLY BUSHINGS (set of 4)	1
15	300131	SPRING, LATCH	1				

OHIOSTEEL INDUSTRIES

Designed And Tested In Columbus, Ohio

Manufactured In The U.S.A. From Domestic
And Imported Components



MODEL # 3040P

2575 Ferris Road Columbus, OH 43224
(800) 652-2321

www.OHIOSTEEL.com

(800) 652-2321