



42CPA **42" CORE PLUG AERATOR**



**READ AND FOLLOW ALL SAFETY RULES AND OPERATING
INSTRUCTIONS BEFORE USING THIS EQUIPMENT**

Safety Rules



This is the safety alert symbol. It is used to alert you to potential personal injury hazards. Obey all safety messages that follow this symbol to avoid possible injury or death.

Read and understand all safety rules and operating instructions before using this tractor attachment.

Follow all safety rules and operating instructions provided by your tractor's manufacturer when using attachment.

Never allow children or untrained persons to operate tractor or attachment.

Reduce tractor speed to slowest setting when towing or operating on slopes.

Operate up and down slopes, never across the face of slopes.

Do not carry passengers on tractor or attachment.

Avoid sudden turns or maneuvers.

Do not tow attachment on public roadways.

Do not remove warning decals from product.

Check product for worn, loose, or damaged parts before each use. If any damage is present, repair the product before using.

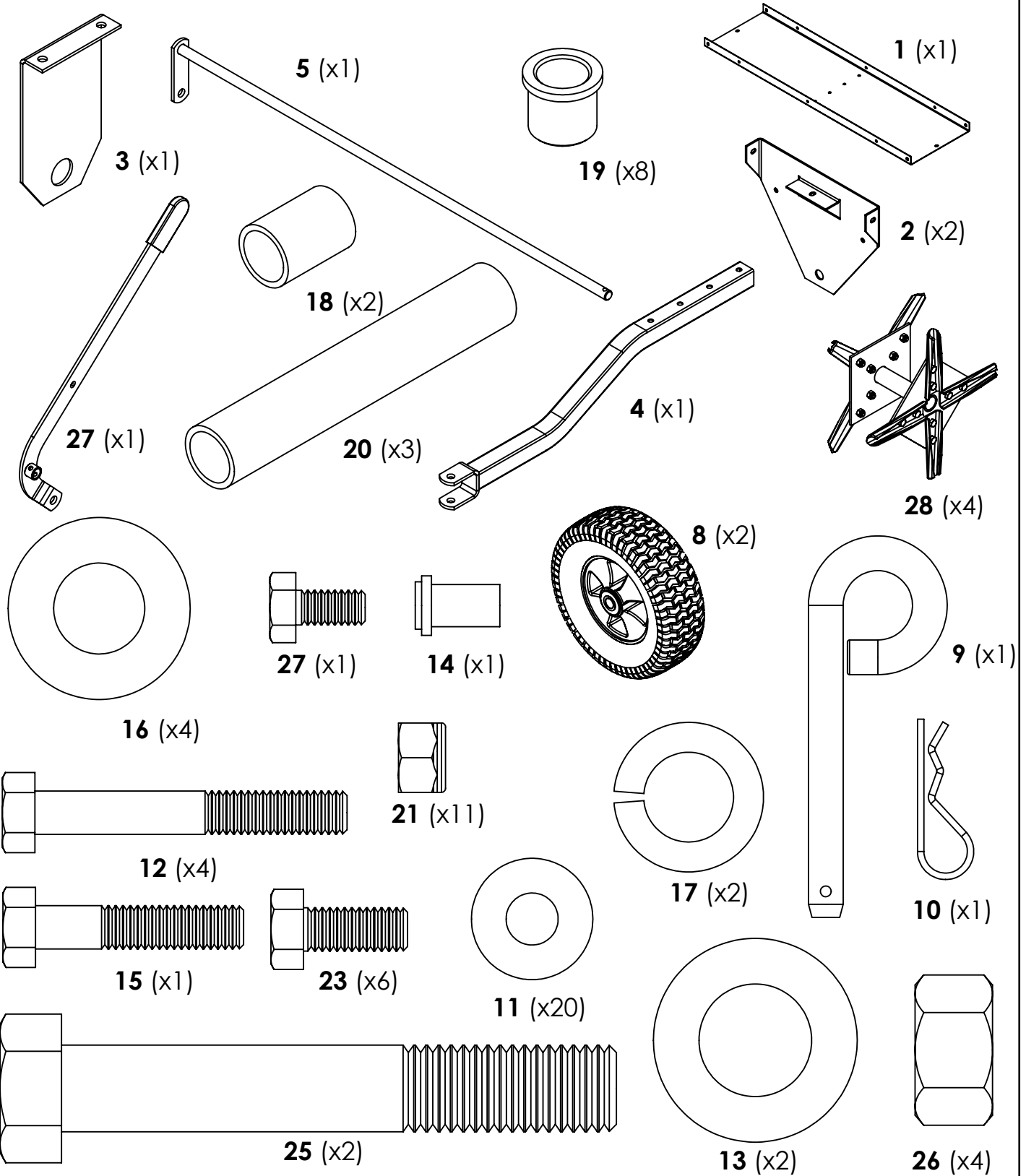
Check product for loose or missing fasteners before each use. Tighten or replace fasteners as needed before using.

Do not exceed tractor speed of 6 miles per hour when towing Lawn Aerator.

Do not exceed tractor speed of 3 miles per hour when operating Lawn Aerator.

Lawn Aerator has sharp points; always handle with care and wear proper footwear when operating.

Carton Contents



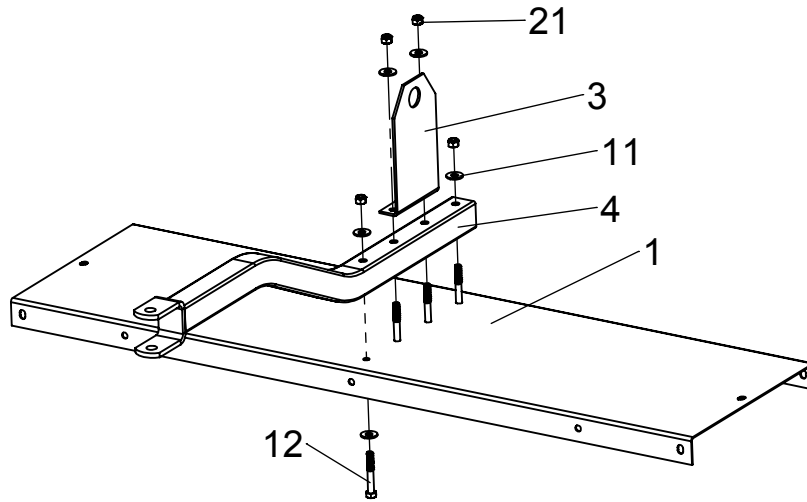
TOOLS REQUIRED FOR ASSEMBLY:

- 1/2" Wrench and Socket
- 15/16" Wrench and Socket
- Needle-Nose Pliers
- Mallet

Assembly Instructions

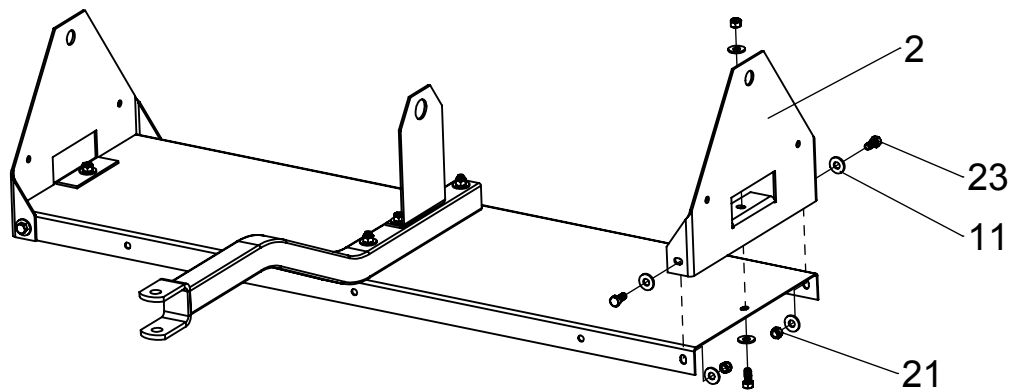
1

Attach Hitch and Center Plate to Top Plate and tighten hardware as shown.



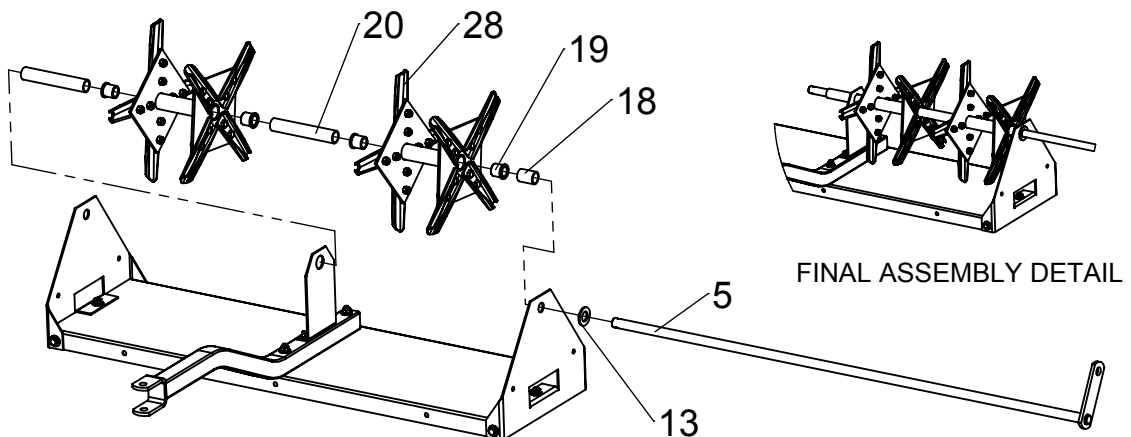
2

Attach Side Plates using hardware as shown.



3

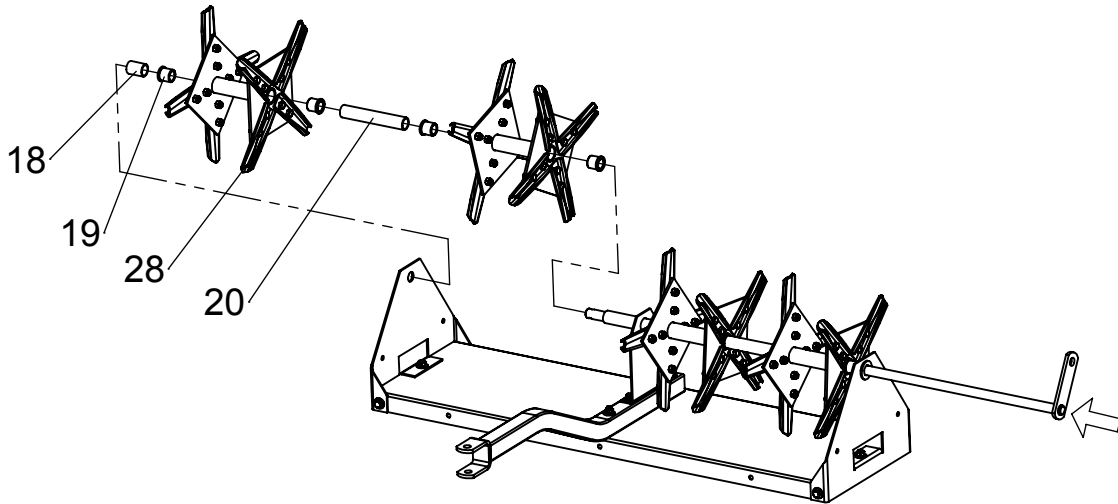
Slide Washer, Spool Assemblies, Bushings, and Spacers onto axle as shown sliding Axle as assembly progresses.



Assembly Instructions

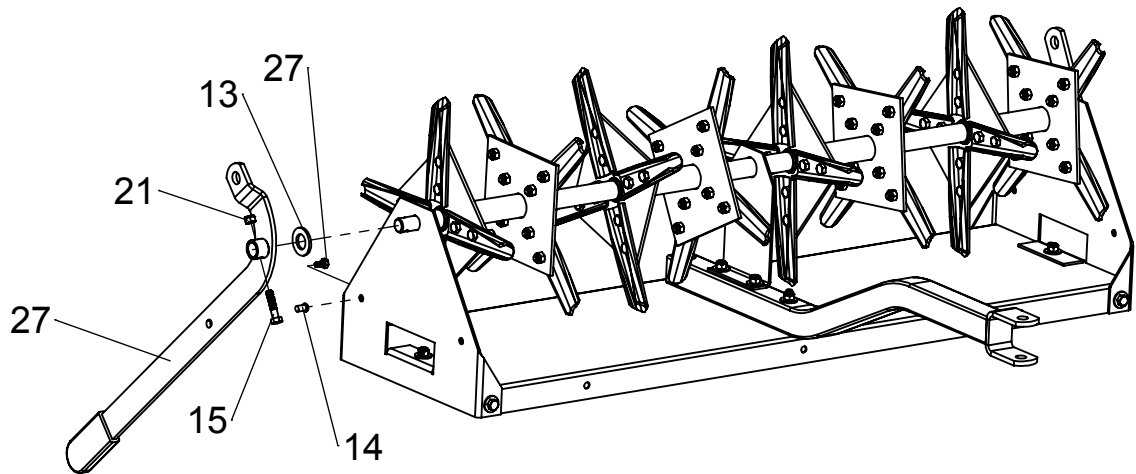
4

Slide Bushings, Spools, and Spacers onto opposite end of Axle as shown. Push Axle bar completely through to the other side.



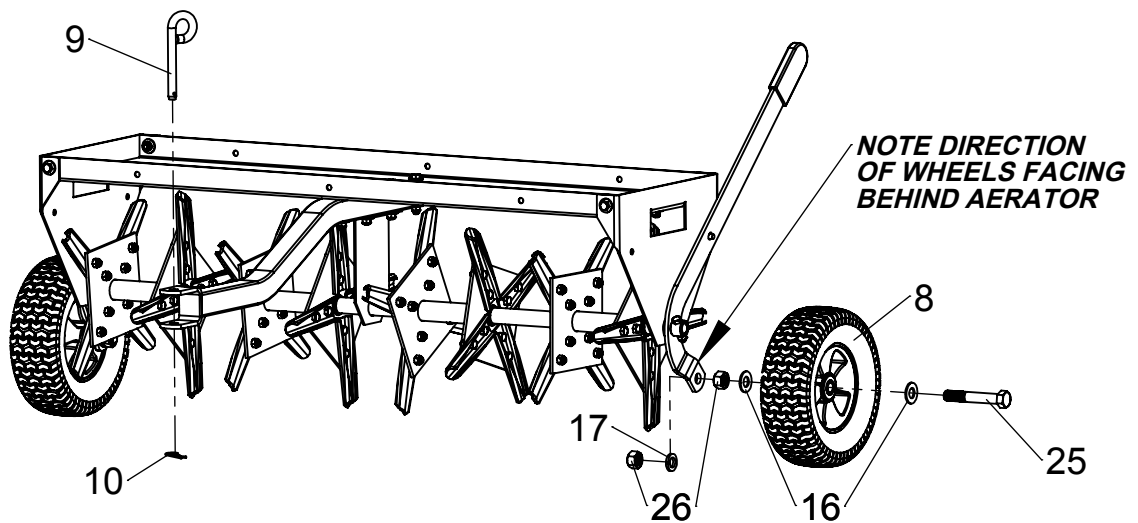
5

Attach Handle Assembly and Washer using supplied hardware as shown. Secure Locking Pin with Bolt to hold handle in place.



6

Attach Wheels and Hitch Pin and secure with hardware as shown.



Operating Instructions

Before Using Lawn Aerator:

1. Read all Safety Rules found on page 2.

How to Aerate Lawn:

1. Mow lawn and remove loose clippings.
2. If ground is extremely hard or dry, it should be watered for one to two hours before aerating.
3. Do not aerate if ground is too wet or muddy.
4. Attach Lawn Aerator to tractor using supplied hitch pin.
5. Start tractor engine and tow Lawn Aerator to lawn.
6. When in desired location, release hand lever to retract wheels. Tines should be contacting the ground.
7. Engage tractor drive at its slowest speed and begin aerating. Increase tractor speed as desired.
8. Aerate in straight lines whenever possible and avoid sharp turns.
9. Optimal aeration will yield soil plugs roughly 2-3 inches in length. Add weight and/or reduce tractor speed as necessary to improve aeration.
10. Up to four standard concrete blocks (160 lbs), or other weights, can be added to the top plate to increase aeration depth. Always secure weights to top plate using bungee straps (not provided).

Periodic Maintenance:

- Tighten fasteners as needed before each use
- Check tires before each use

Warranty

If this product fails due to a defect in material or workmanship within TWO YEARS from the date of purchase, we will at our option repair or replace it free of charge. This warranty excludes tires, wheels, springs and tines, which are expendable and become worn during normal use.

This warranty does not cover:

- Repairs necessary because of operator abuse or negligence.
- Equipment used for commercial or rental purposes.
- Paint that is worn or faded due to normal use or exposure.

To arrange for product repair call 1-800-652-2321, or return this product to place of purchase for replacement.

This warranty gives you specific legal rights, and you may also have other rights which may vary from state to state. This warranty applies only while this product is in use in the United States.

In the space below record the purchase date of your Lawn Aerator.

Model Number **42CPA** _____

Purchase Date _____

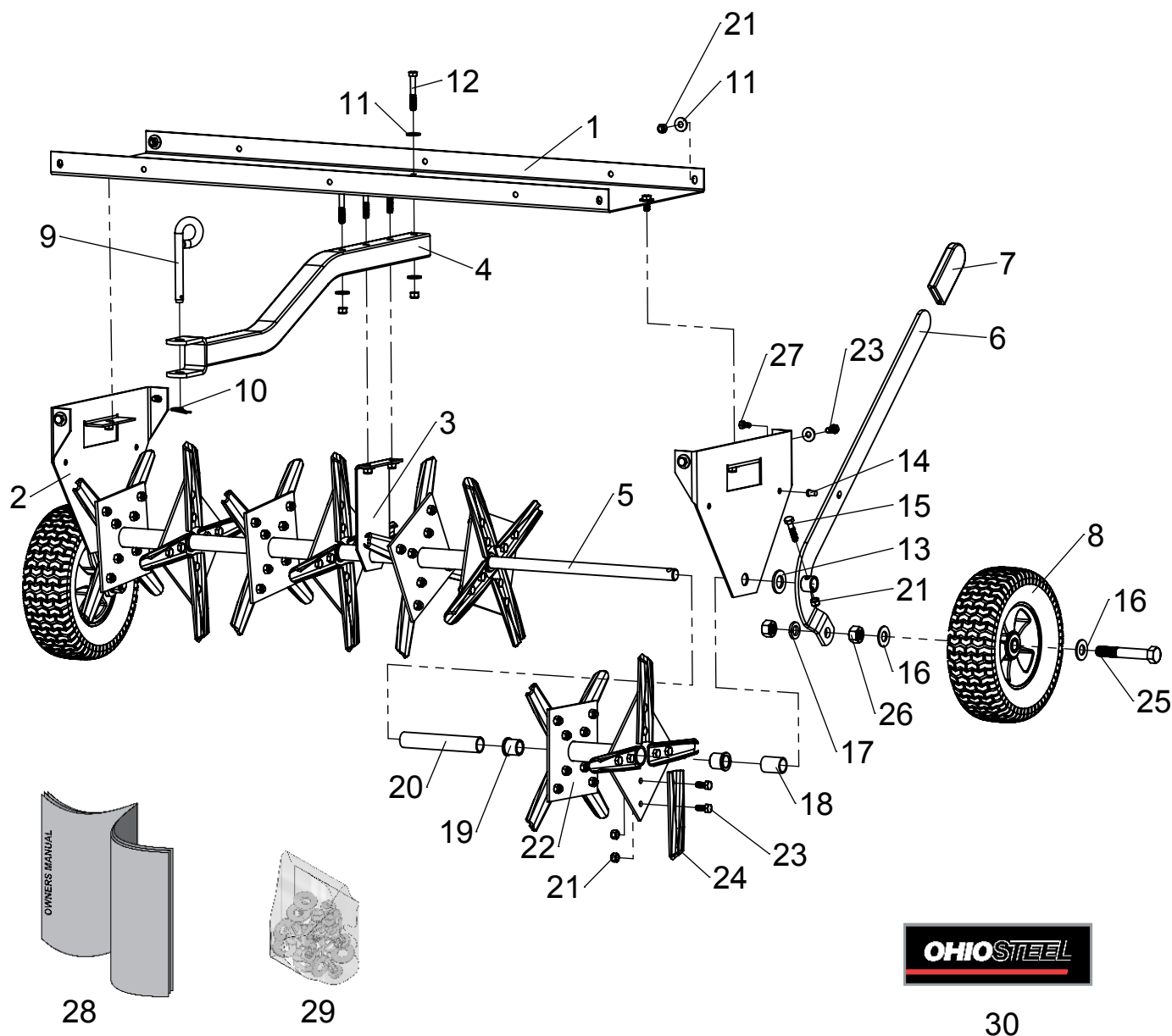
Keep this Owner's Manual and your receipt in a safe place for future reference.

After the two year warranty period all replacement parts may be ordered by calling **1-800-652-2321**.

When ordering replacement parts, always give the following information:

- Product **42" CORE PLUG AERATOR** _____
- Model Number **42CPA** _____
- Part Number _____
- Part Description _____

Repair Parts



ITEM	PART NO	DESCRIPTION	QTY	ITEM	PART NO	DESCRIPTION	QTY
1	6000631	PLATE, TOP	1	16	300071	WASHER, 5/8" SAE	4
2	6000632	PLATE, SIDE	2	17	6000740	5/8" SPLIT LOCKWASHER	2
3	6000633	PLATE, CENTER	1	18	300126	SPACER, 3/4" X 1.375"	2
4	6000635-G	DRAWBAR	1	19	300211	BEARING	8
5	6000638-G	AXLE	1	20	6000647	SPACER, 3/4" X 5.750"	3
6	6000641-G	HANDLE, FORMED	1	21	3000616	HEX NUT, 5/16-18 NYLOC	76
7	307201	SLEEVE, HANDLE	1	22	6000644	SPOOL, WELDED	4
8	6000656	WHEEL, 10.5 X 3.5	2	23	6000440	HEX HEAD BOLT, 5/16"-18 X 3/4"	70
9	6000533	PIN, HITCH	1	24	6000646	TINE	32
10	300084	HAIRPIN COTTER, 0.093" X 2-5/16"	1	25	6000738	5/8-11 X 4" HEX HEAD BOLT	2
11	3000711	WASHER, 5/16" USS	20	26	6000739	5/8-11 HEX NUT	4
12	6000736	5/16-18x2.25" HEX HEAD BOLT	4	27	6000869	1/4-20 x 1/2" HEX HEAD BOLT	1
13	3000721	WASHER, 3/4" SAE	2	28	6000743	OWNERS MANUAL	1
14	6000870	LOCKING PIN	1	29	6000741	HARDWARE BOLT BAG	1
15	6000562	5/16-18x1.50" HEX HEAD BOLT	1	30	6000735	DECAL, OSI	2

Notes



DESIGNED AND TESTED IN
COLUMBUS, OHIO

MANUFACTURED IN THE U.S.A. FROM DOMESTIC
AND IMPORTED COMPONENTS



MODEL # 42CPA

www.OHIOSTEEL.com

(800) 652-2321