

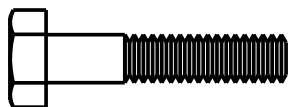
TOOLS SUGGESTED FOR ASSEMBLY

7/16" wrench and/or socket
 large blade screwdriver
 pair of pliers
 cordless drill

SAFETY INSTRUCTIONS

Keep all foreign objects out of the hopper.
 Never stand, sit or carry passengers on hopper.
 Never exceed load capacity of 100 pounds.
 Operate up and down slopes, never across the face of slopes.
 Avoid sudden turns or maneuvers.

Bolt Bag Contents - 610.241942



19



19LN



22



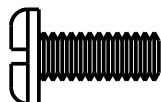
26



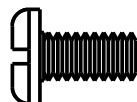
27



17



18



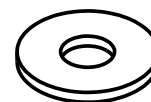
21



18LW



18N



20



23

REF. NO.	PART NO.	AMT.	DESCRIPTION	REF. NO.	PART NO.	AMT.	DESCRIPTION
17	STD541610	8	10-24 wing nut	20	STD551025	1	1/4" flat washer
18	94-18	4	bolt 1/4" x 5/8" pan	21	94-21	3	bolt 1/4" x 1/2" pan
18LW	STD551125	6	1/4" lock washer	22	94-22	4	#8 self tapping screw
18N	STD541025	6	1/4" hex nut	23	94-23	2	1/8" x 1" cotter pin
19	STD522512	2	bolt 1/4" x 1 1/4" hex	26	94-26	8	10-24 x 1/2" carriage bolt
19LN	STD541425	3	1/4" lock nut	27	STD551110	8	3/16" lock washer

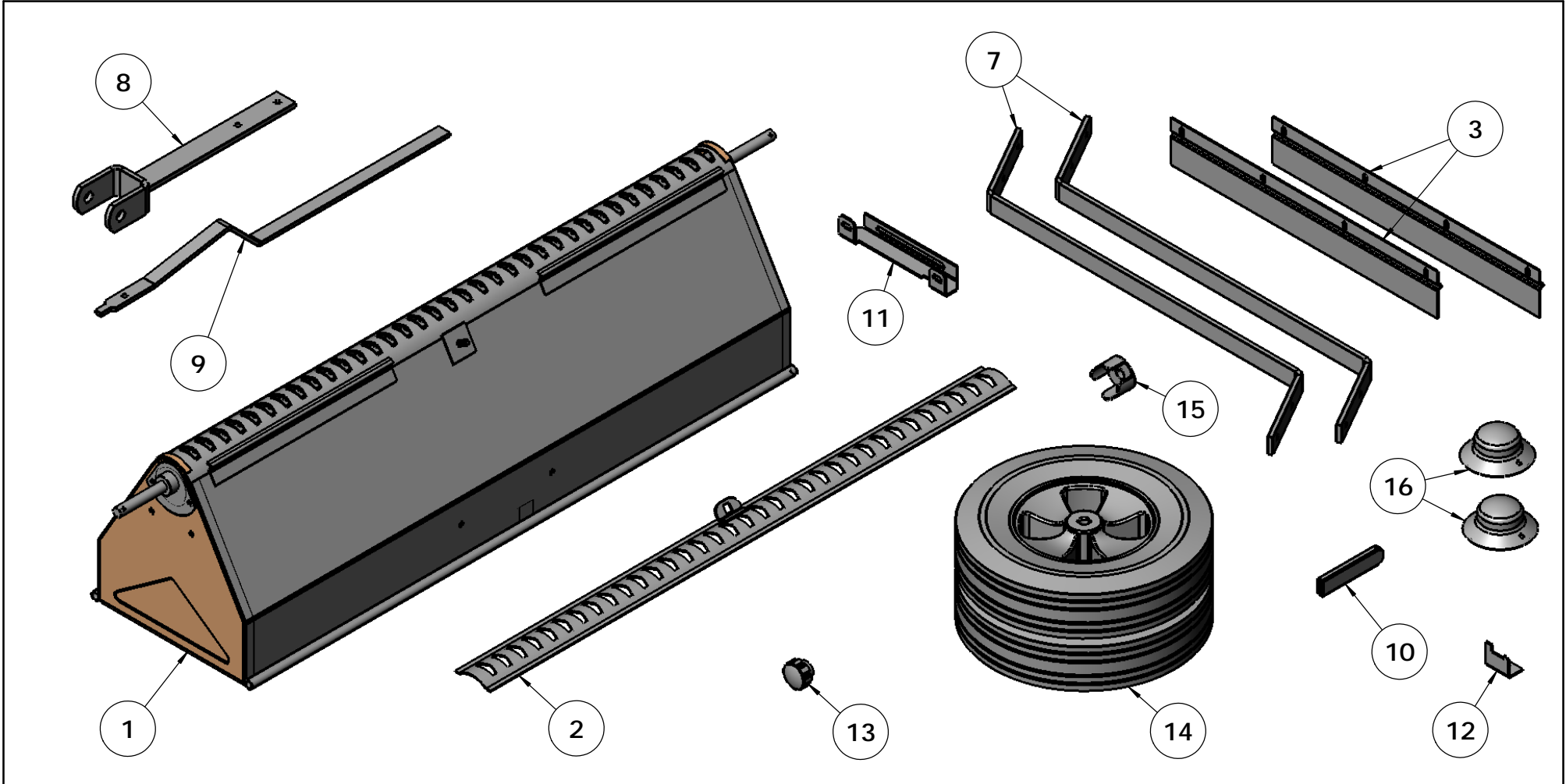
MAINTENANCE & STORAGE

It is important to clean the spreader after each use.
 Periodically check all nuts and bolts for tightness.
 Oil lever at the pivot screw. Oil wheel bearings.
 Store inside a clean, dry area when not in use.

OPERATION

Set the adjustment lever to the "close" position.
 Refer to the materials application chart with the product you are using for adjustment setting.
 Set adjustment stop to recommended setting by loosening knob and moving to correct position and tightening knob.
 To stop spreading, return the lever to the closed position.

Carton Contents - 610.241942



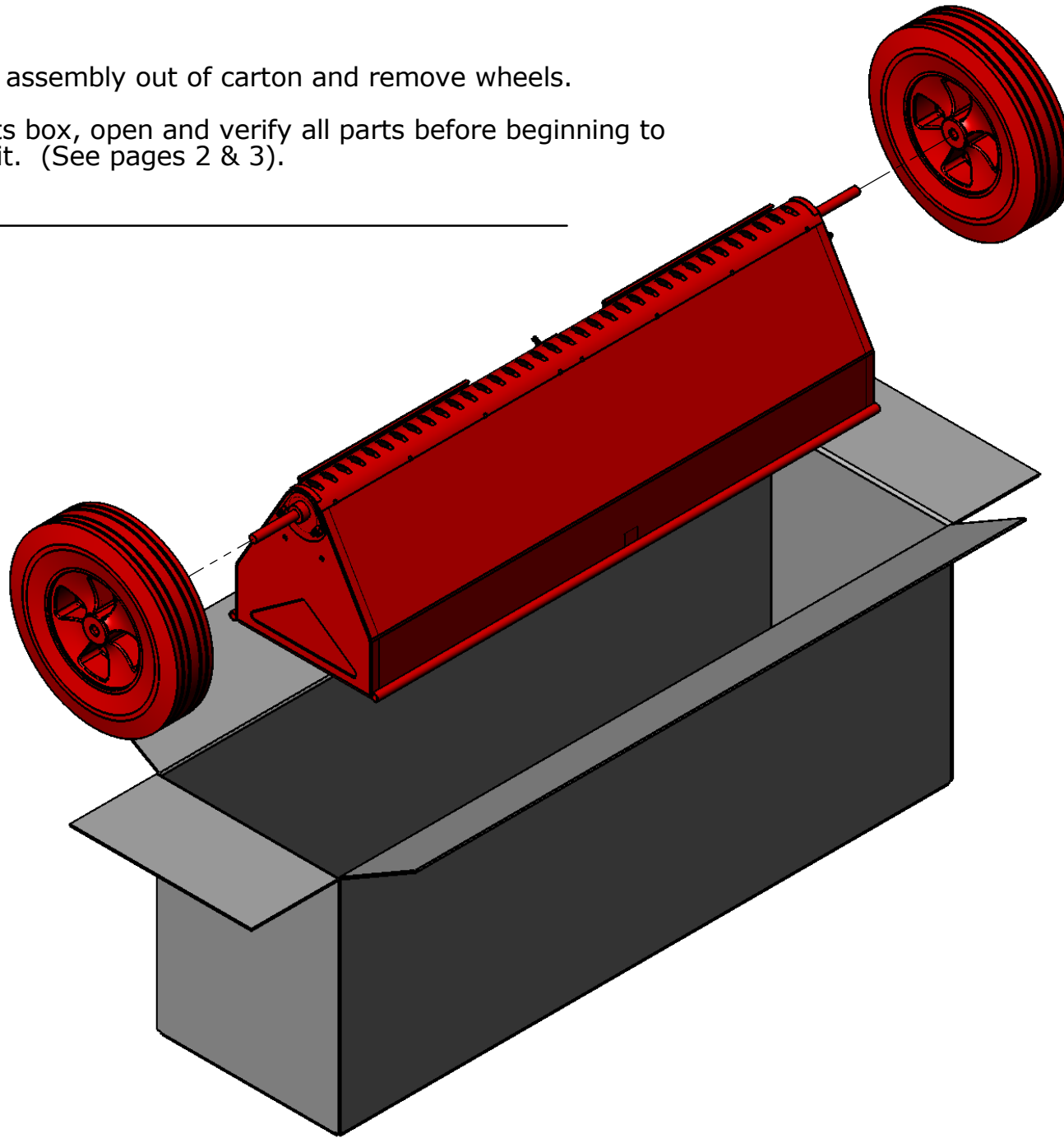
REF. NO.	PART NO.	AMT.	DESCRIPTION	REF. NO.	PART NO.	AMT.	DESCRIPTION
1	94-1	1	hopper assembly	12	94-12	1	adjustment stop
2	94-2	1	gate	13	94-13	1	adjustment knob
3	94-3	2	scatter plate	14	94-14	2	wheel
7	94-7	2	side plate	15	94-15	1	drive wheel hub
8	94-8	1	hitch assembly	16	94-16	2	hub cap
9	94-9	1	adjustment lever	24	94-24	1	assembly manual
10	94-10	1	plastic grip	BB	94-BB	1	bolt bag
11	94-11	1	calibration bracket				

FOR MISSING PARTS, Call 1-800-652-2321, Monday - Friday, 8 a.m. - 5 p.m. E.S.T.
Page 3.

Out of Carton

Step 1. Take hopper assembly out of carton and remove wheels.

Step 2. Remove parts box, open and verify all parts before beginning to assemble unit. (See pages 2 & 3).



Add Scatter Plates

Step 3. Attach scatter plate (3) to hopper assembly (1) by standing unit upright and inserting carriage bolt (26) through inside of hopper at each end of scatter plate. Secure "LOOSELY" with lock washer (27) and wing nut (17).

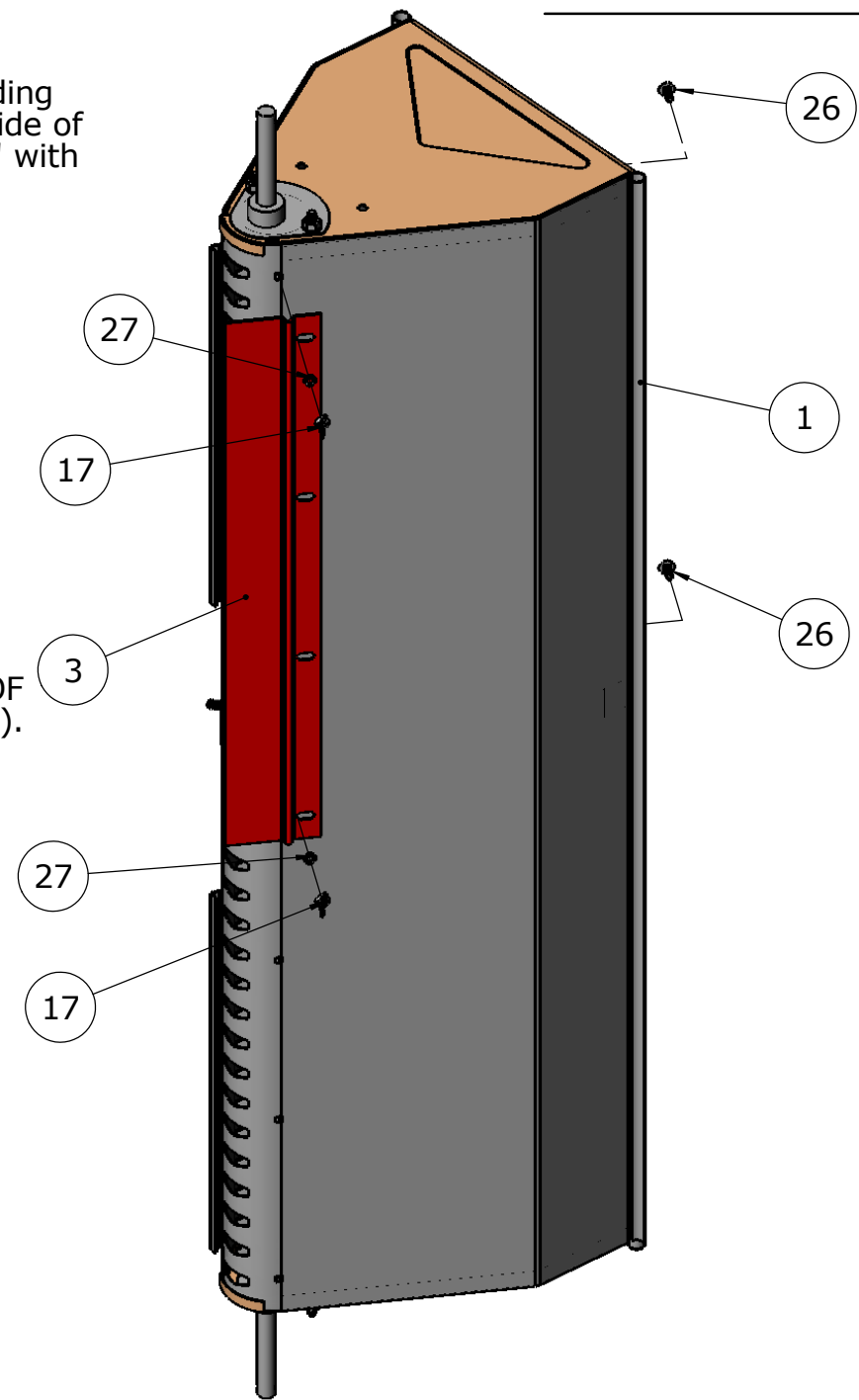
Step 4. Turn unit over and repeat step 3.



NOTE: BOLTS ARE TO BE INSERTED THROUGH INSIDE OF HOPPER ASSEMBLY.



NOTE: POSITION OF SCATTER PLATE (3).

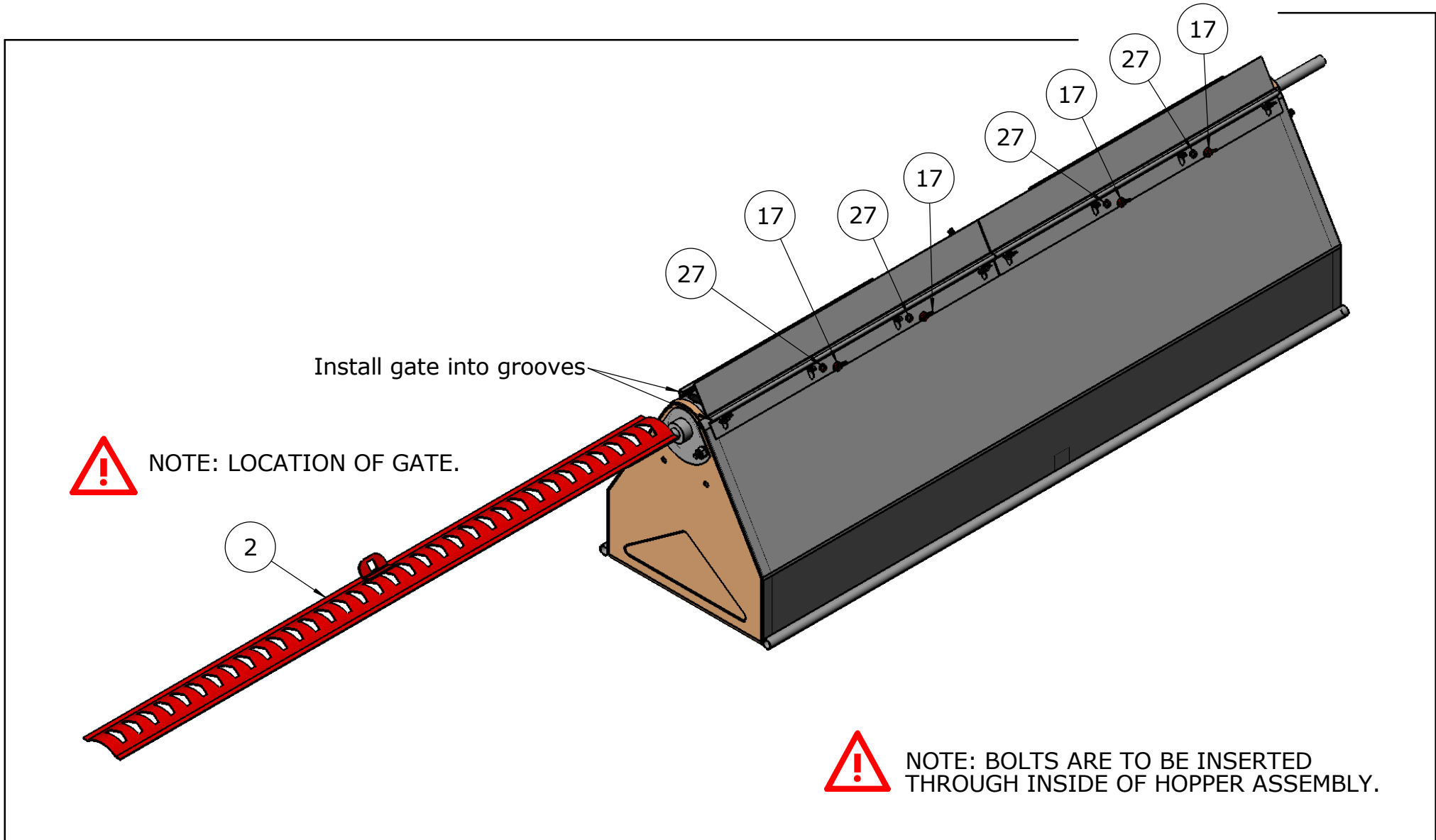


Add Gate

Step 5. Loosely add the remaining carriage bolts (26), lock washers (27) and wing nuts (17) in the scatter plates (3).

Step 6. Slide gate (2) into grooves of the welded gate retainers and scatter plates (3), gate can only be inserted as shown.

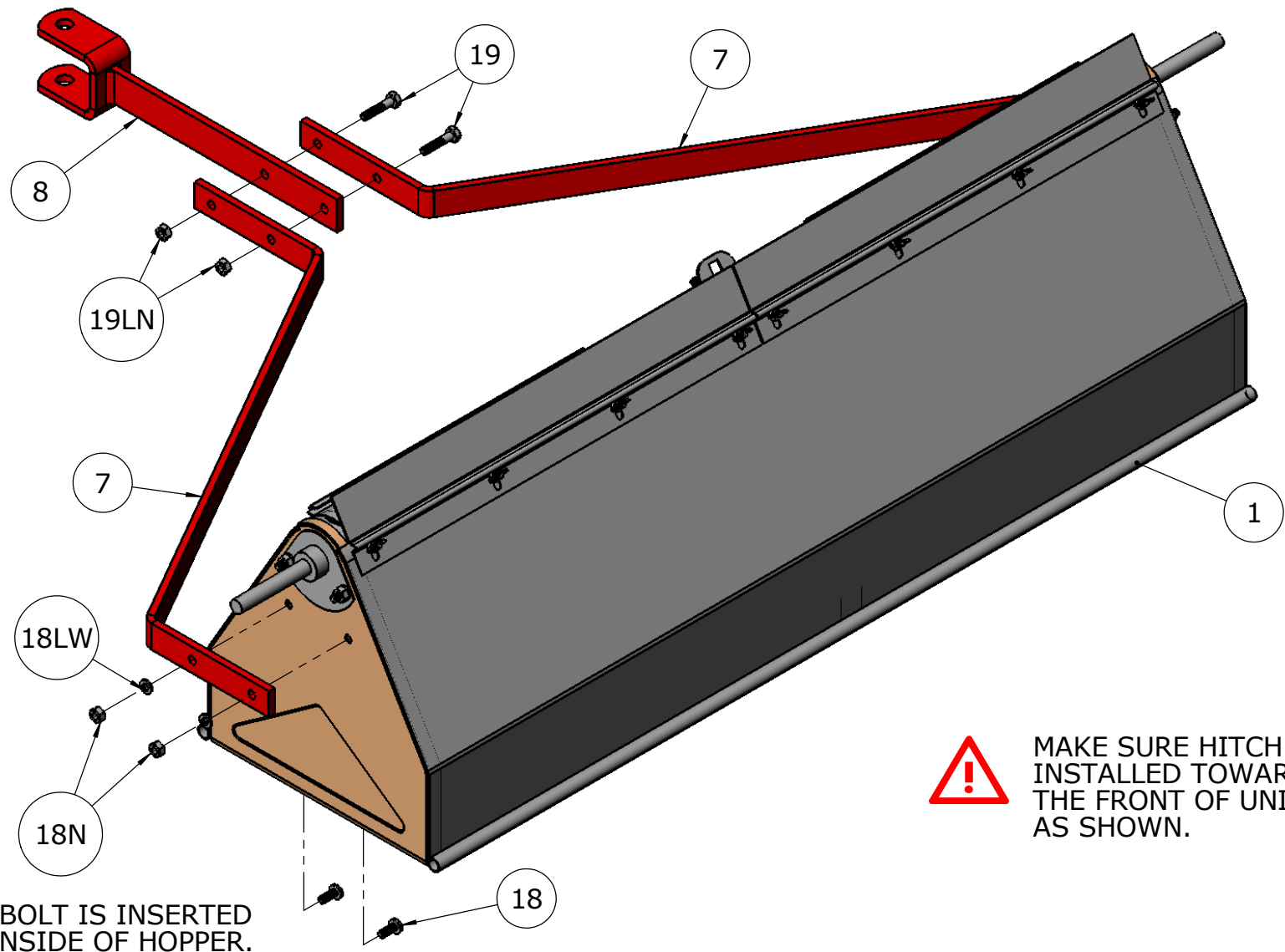
Step 7. Tighten wing nuts at this time.



Add Side Bars and Hitch

Step 8. Attach side bars (7) with bolts (18), lock washers (18LW) and nuts (18N), IN DIRECTION SHOWN.

Step 9. Attach hitch assembly (8) with bolts (19) and lock nuts (19LN).



NOTE: BOLT IS INSERTED THRU INSIDE OF HOPPER.



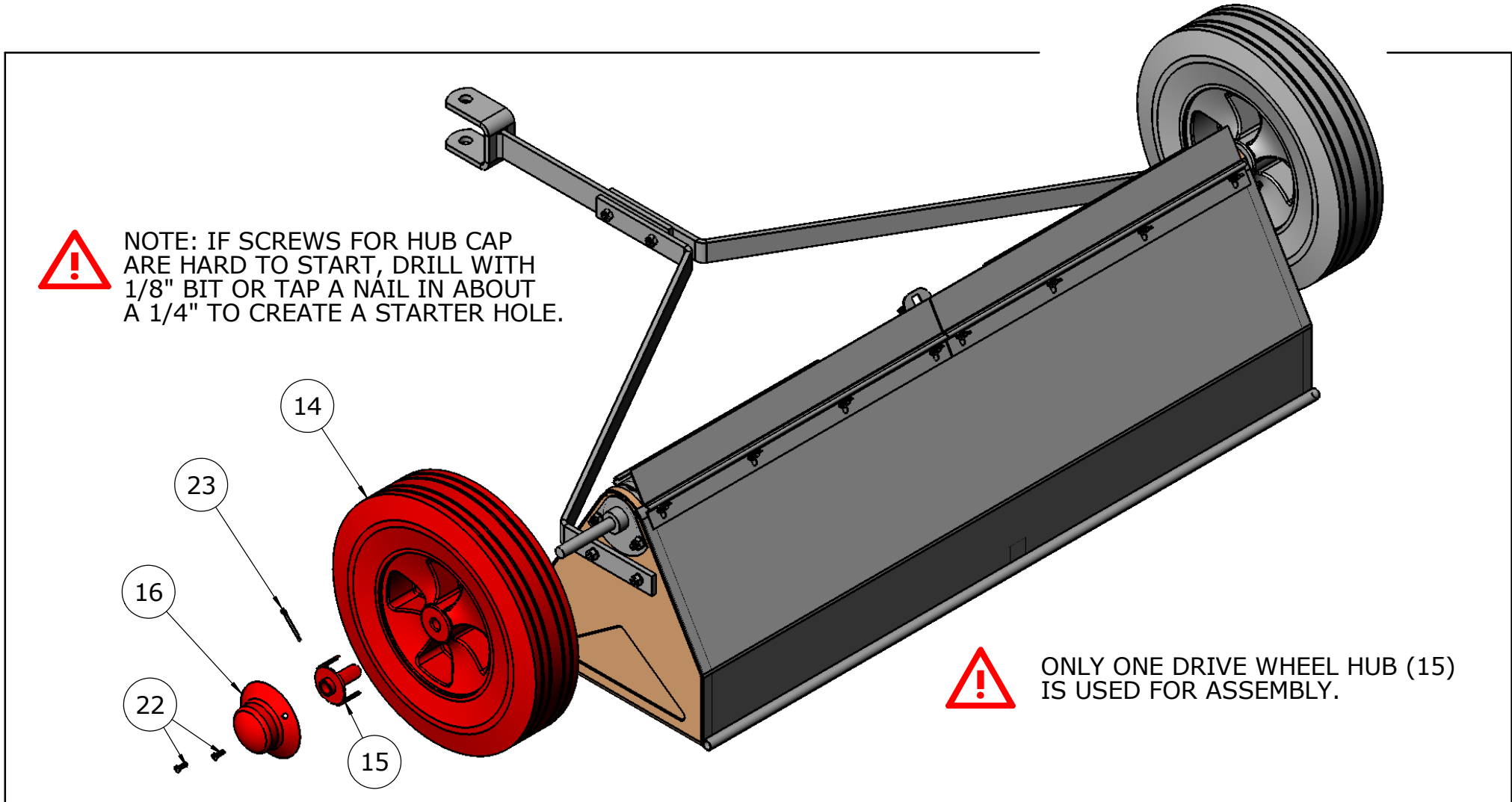
MAKE SURE HITCH IS INSTALLED TOWARDS THE FRONT OF UNIT AS SHOWN.

Add Wheels

Step 10. Slide wheel (14) on the axle.

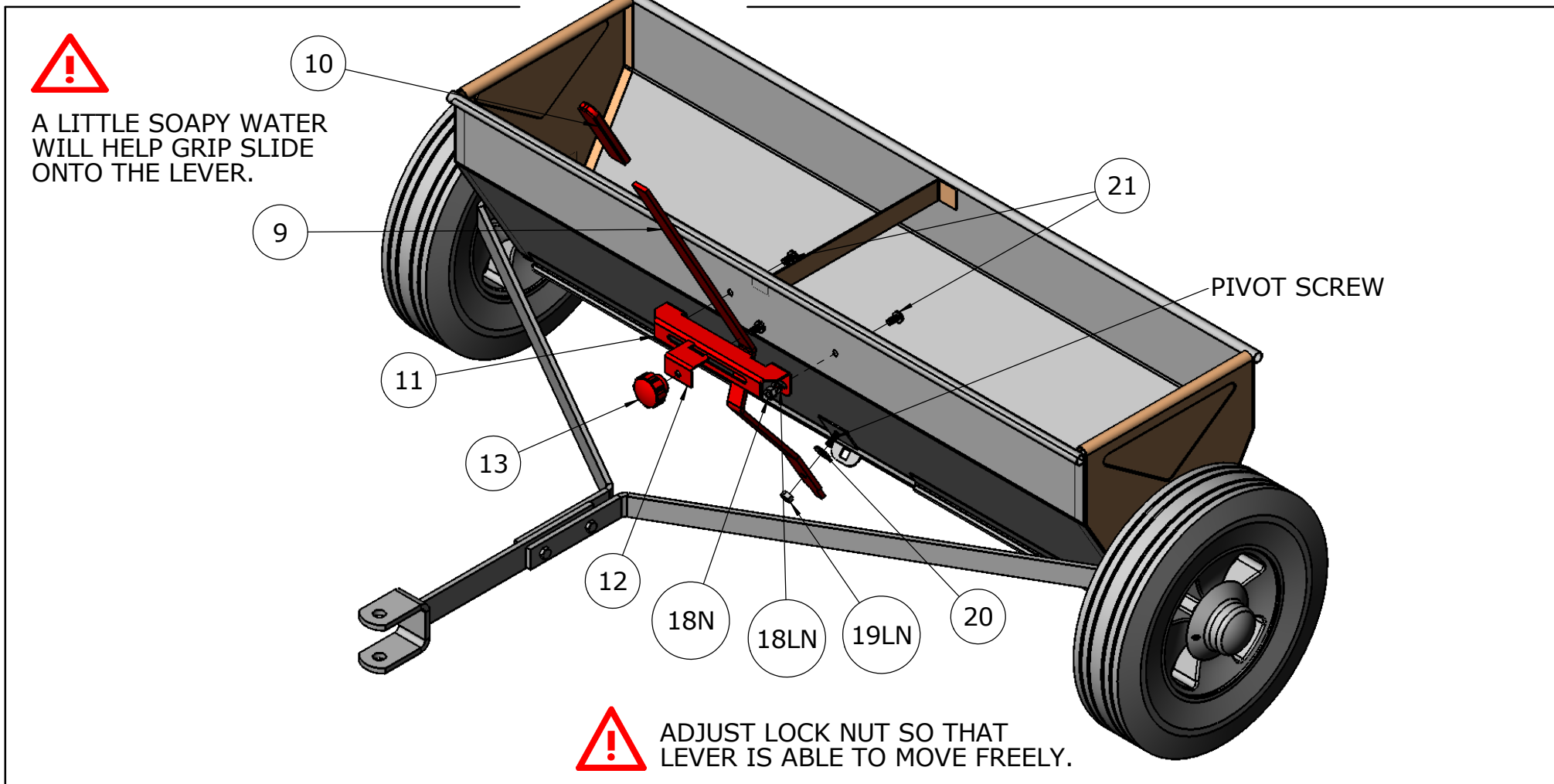
Step 11. Add drive wheel hub (15) with legs engaging the the hub of the wheel. Line hole in extruded part of the hub with the hole in the axle and slip cotter pin (23) through these holes and bend to lock in place.

Step 12. Add hub cap (16) with the two self tapping screws (22).

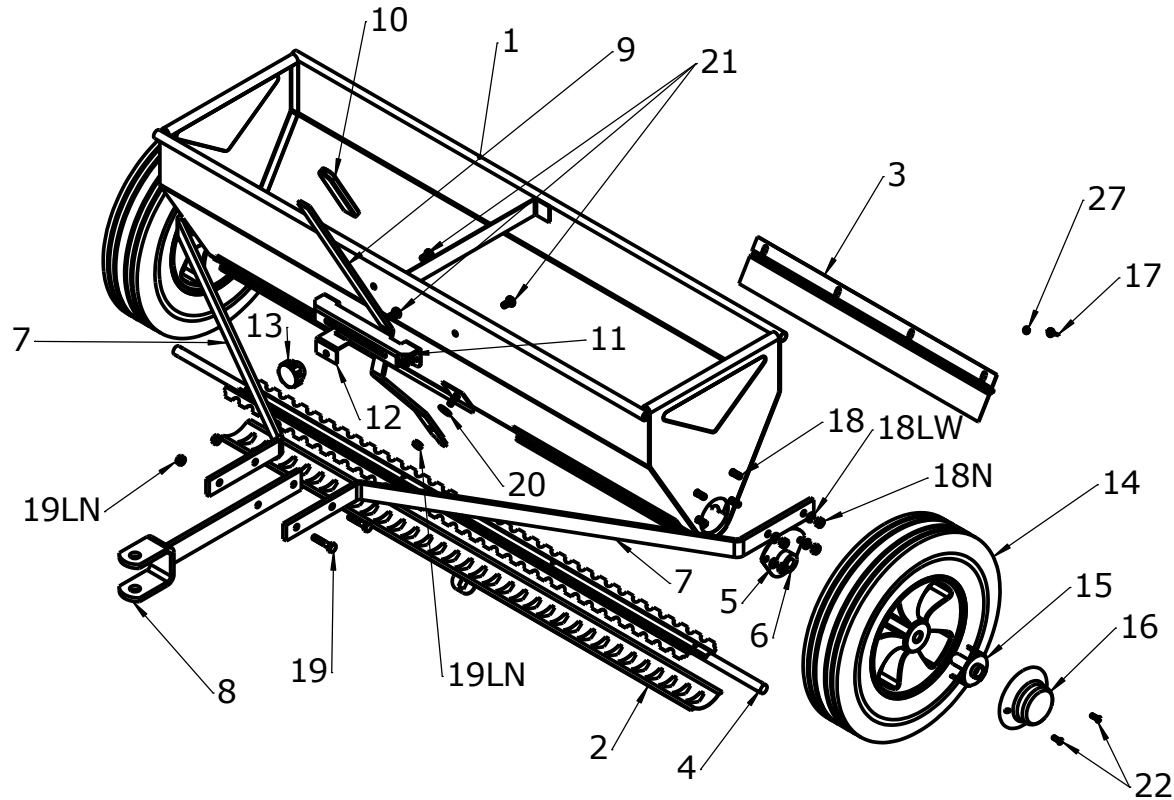


Control Assembly

- Step 13. Add flat washer (20) over pivot screw, next add the adjustment lever (9) through square hole in tab on the gate (2) and over pivot screw, secure with lock nut (19LN). NOTE: DO NOT OVER TIGHTEN, LEVER MUST BE ABLE TO MOVE FREELY.
- Step 14. Assemble the adjustment stop (12) to the calibration bracket (11) using bolt (21) through both pieces and into the adjustment knob (13).
- Step 15. Attach this assembly to the hopper, caging the lever (9). Use two bolts (21) with lock washer and nuts.
- Step 16. Add plastic grip (10) to lever (9).



Repair Parts List - 610.241942



REF. NO.	PART NO.	AMT.	DESCRIPTION	REF. NO.	PART NO.	AMT.	DESCRIPTION
1	94-1	1	hopper assembly	16	94-16	2	hub cap
2	94-2	1	gate	17	STD541610	8	10-24 wing nut
3	94-3	2	scatter plate	18	94-18	4	bolt 1/4 x 5/8 pan head
4	94-4	1	axle-agitator assembly	18LW	STD551125	6	lock washer 1/4"
5	94-5	2	bearing bracket	18N	STD541025	6	hex nut 1/4"
6	94-6	2	nylon bearing	19	STD522512	2	bolt 1/4" x 1 1/4" hex
7	94-7	2	side bar	19LN	STD541425	3	lock nut 1/4"
8	94-8	1	hitch assembly	20	STD551025	1	flat washer 1/4"
9	94-9	1	adjustment lever	21	94-21	3	bolt 1/4" x 3/4" round
10	94-10	1	plastic grip	22	94-22	4	#8 self thread screw
11	94-11	1	calibration bracket	23	94-23	2	cotter pin 1/8" x 1"
12	94-12	1	adjustment stop	24	94-24	1	assembly manual
13	94-13	1	adjustment knob	25	94-25	1	application chart
14	94-14	2	wheel	26	94-26	8	carriage bolt 1/2"
15	94-15	1	drive wheel hub	27	STD551110	8	3/16" lock washer

FOR MISSING PARTS, Call 1-800-652-2321, Monday - Friday, 8 a.m. - 5 p.m. E.S.T.