



## 3040P-SD180 SWIVEL+ 180° FULL DUMP CART

Patents US8496298 & US9004607



**READ AND FOLLOW ALL SAFETY RULES AND OPERATING  
INSTRUCTIONS BEFORE USING THIS EQUIPMENT**



# ***Safety Rules***



**This is the safety alert symbol. It is used to alert you to potential personal injury hazards. Obey all safety messages that follow this symbol to avoid possible injury or death.**

Read and understand all safety rules and operating instructions before using this tractor attachment.

Follow all safety rules and operating instructions provided by your vehicle's manufacturer when using attachment.

Never allow children or untrained persons to operate vehicle or attachment.

Do not exceed the vehicle manufacturer's towed weight limit.

Reduce vehicle speed and allow extra stopping distance when towing heavy loads.

Reduce vehicle speed and towed weight when operating on slopes.

Operate up and down slopes, never across the face of slopes.

Do not carry passengers on vehicle or attachment.

Avoid sudden turns or maneuvers.

Do not tow attachment on public roadways.

Do not remove warning decals from product.

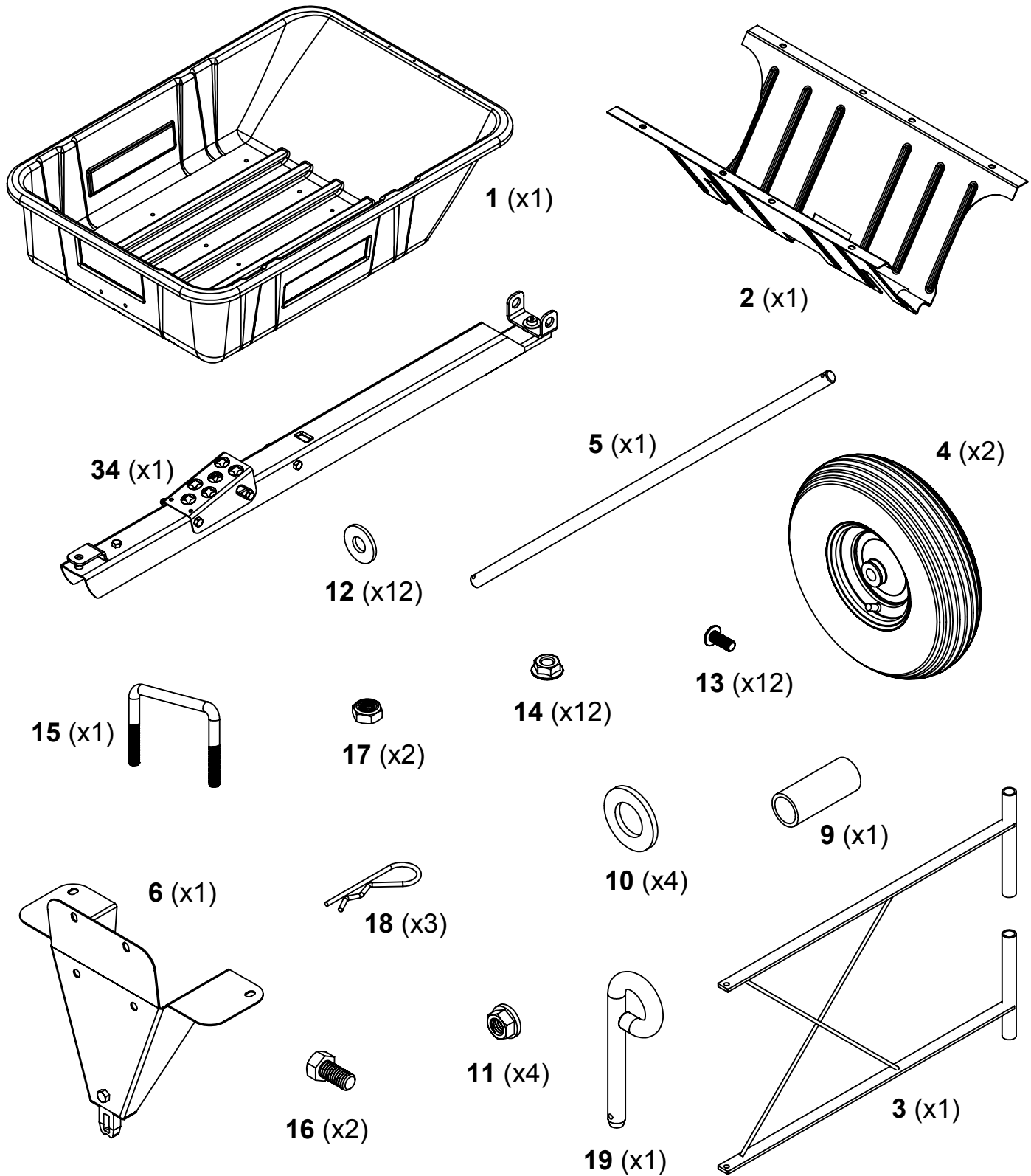
Check product for worn, loose, or damaged parts before each use. If any damage is present, repair the product before using.

Check product for loose or missing fasteners before each use. Tighten or replace fasteners as needed before using.

Do not exceed vehicle speed of 6 miles per hour when towing Dump Cart.

Do not exceed Dump Cart rated weight capacity of 600 pounds.

# Carton Contents



## TOOLS REQUIRED FOR ASSEMBLY:

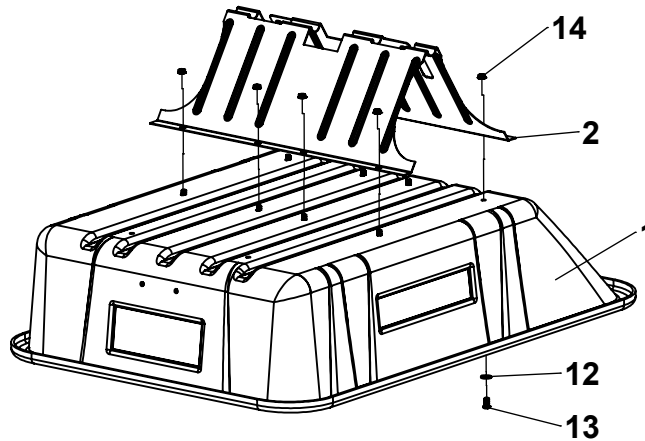
- 1/2" Wrench or Socket
- 9/16" Socket and Wrench
- Large Flat Screwdriver

# Assembly Instructions

**1**

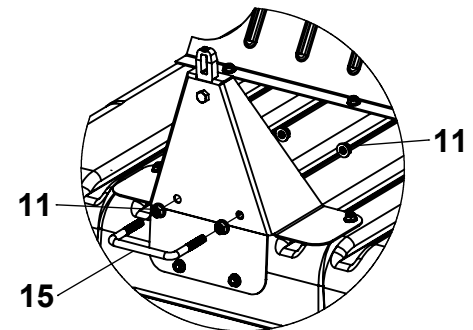
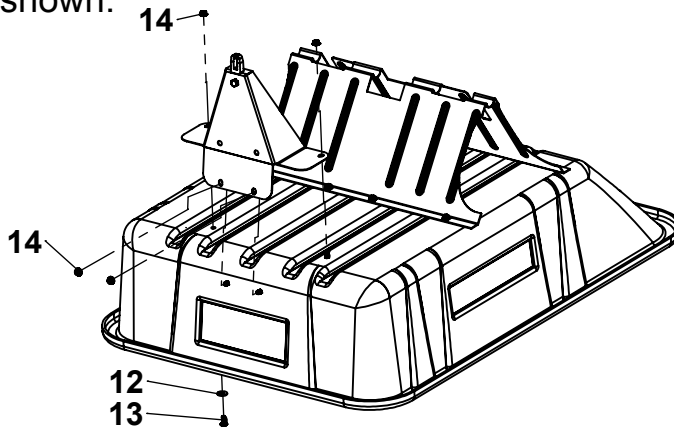
Attach Undercarriage to Poly Body with slots facing the rear of the body and loosely tighten with hardware as shown.

**DO NOT  
TIGHTEN  
HARDWARE  
AT THIS TIME**



**2**

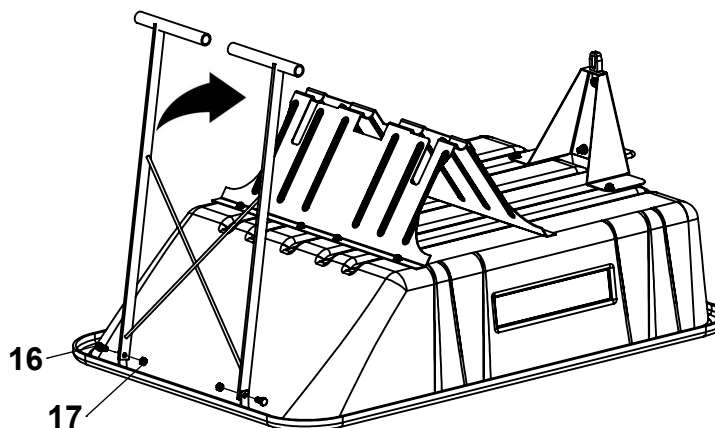
Attach Front Support **loosely** to Poly Body as shown. Thread two Flange Hex nuts on the Handle to the end of the thread ensuring the flange will be facing the Front Support in the final assembly. Insert Handle with two Flange Hex Nut on the other side of the Front Support and tighten **ONLY** the Handle nuts at this time as shown.



Handle with Flange Hex  
Nuts on either side

**3**

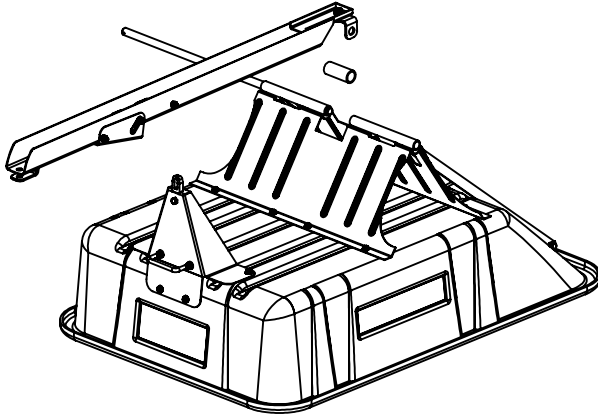
Tighten bolts of the Rear Support to contact the Hopper Hinge Bracket as shown. Take care not to overtighten the Hopper Hinge Bracket bolts. Ensure proper tightness of nuts by checking for free rotation.



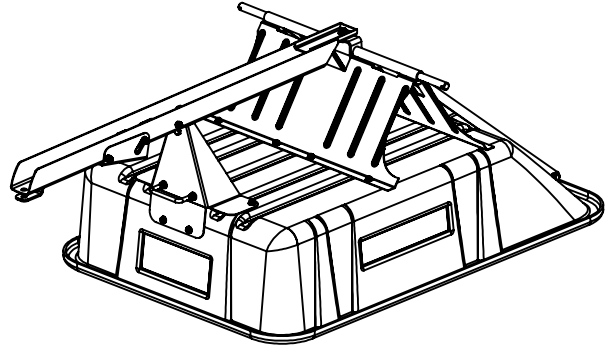
## Assembly Instructions

**4**

Insert Axle into Rear Support halfway as shown. Center Spacer inside Swivel Clevis and align with Axle. Slide Axle completely through Rear Support; Swivel Clevis and Spacer must be captured by Axle as well. Align Drawbar with Front Support and press down to latch. Tighten **all** other hardware.



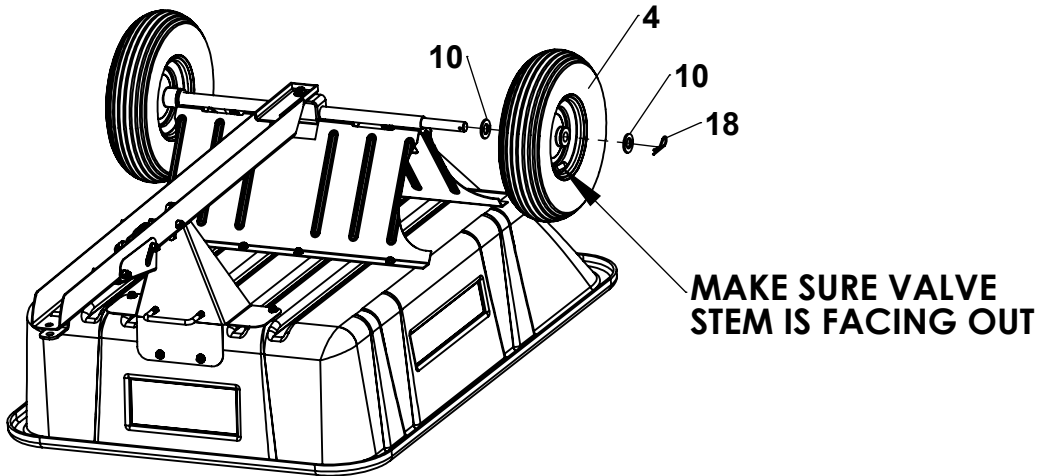
Axle Halfway



Axle Completely Through

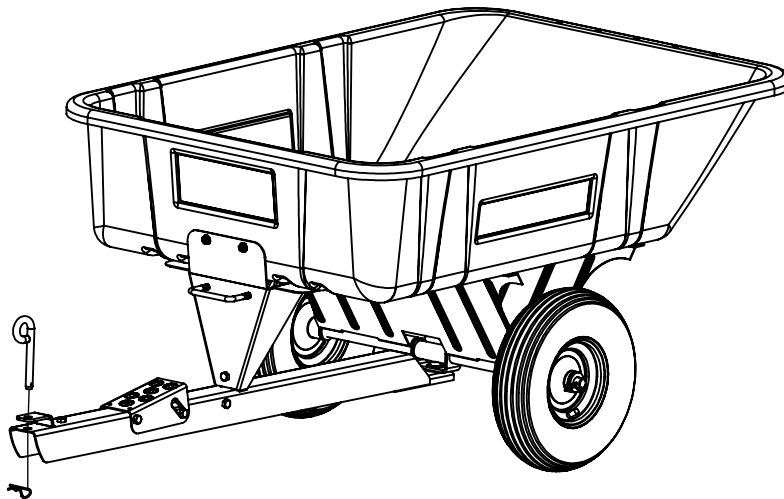
**5**

Slide Washers and Wheels onto Axle and secure with Hairpins as shown.



**6**

Install Hitch Pin as shown.



# ***Operating Instructions***

## **Before Using Dump Cart:**

1. Check tire pressure and inflate to 30 psi if needed.
2. Read all Safety Rules found on page 1.

## **How to Use Dump Cart:**

1. Attach Dump Cart to your tractor using the supplied hitch pin.
2. Do not exceed 600 pounds when loading material into the cart body.
3. Distribute the weight of the load as evenly as possible in the cart body for best handling.
4. When hauling heavy loads, verify that your vehicle has adequate towing and braking capacity.
5. Do not exceed 6 miles per hour when towing Dump Cart.

## **How to Empty Dump Cart:**

1. Step down the foot pedal to release the latch mechanism.
2. Lift the body and swivel as desired to guide the material to preferred location.
3. Lift the body entirely as shown and empty material - Do not swivel with body in position 3
4. Lower the body and guide the latch into the drawbar and relatch.



## **Periodic Maintenance:**

- Tighten fasteners as needed before each use
- Check tire pressure before each use

# ***Warranty***

If this product fails due to a defect in material or workmanship within TWO YEARS from the date of purchase, we will at our option repair or replace it free of charge. This warranty excludes tires and wheels, which are expendable and become worn during normal use.

This warranty does not cover:

- Repairs necessary because of operator abuse or negligence.
- Equipment used for commercial or rental purposes.
- Paint that is worn or faded due to normal use or exposure.

To arrange for product repair call 1-800-652-2321, or return this product to place of purchase for replacement.

This warranty gives you specific legal rights, and you may also have other rights which may vary from state to state. This warranty applies only while this product is in use in the United States.

In the space below record the purchase date of your Dump Cart.

Model Number **3040P-SD180** \_\_\_\_\_

Purchase Date \_\_\_\_\_

Keep this Owner's Manual and your receipt in a safe place for future reference.

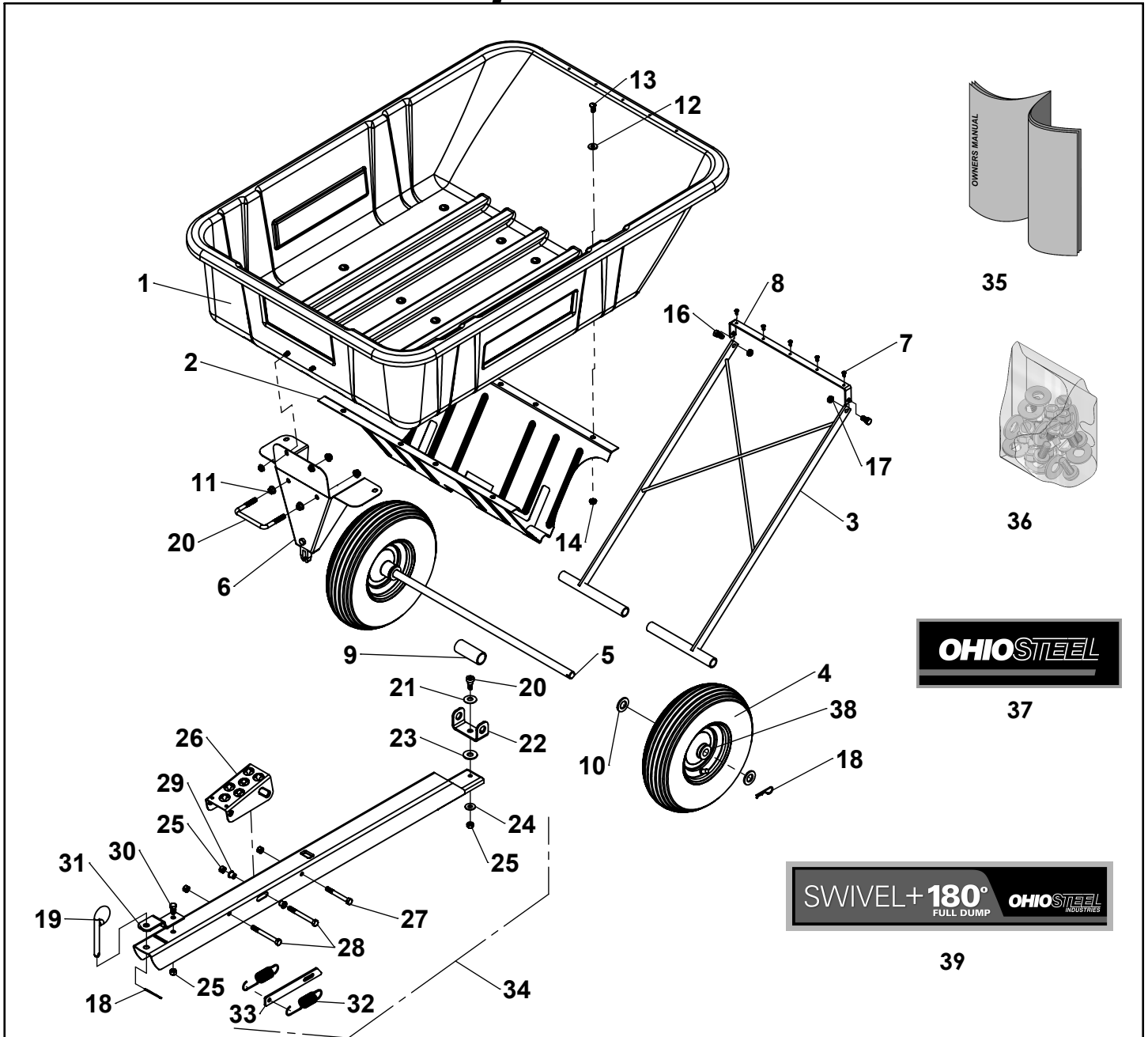
After the two year warranty period all replacement parts may be ordered by calling **1-800-652-2321**.

When ordering replacement parts, always give the following information:

- Product **SWIVEL+ 180° FULL DUMP CART** \_\_\_\_\_
- Model Number **3040P-SD180** \_\_\_\_\_
- Part Number \_\_\_\_\_
- Part Description \_\_\_\_\_



# Repair Parts



ITEM	PART NO	DESCRIPTION	QTY	ITEM	PART NO	DESCRIPTION	QTY
1	6002362	BODY, POLY, 10 CU FT	1	21	6000368	WASHER, SPRING	1
2	6002367	UNDERCARRIAGE	1	22	6000548	CLEVIS, SWIVEL	1
3	6002469	REAR SUPPORT	1	23	300075	WASHER, 1/2" USS	1
4	6002392	WHEEL (includes bushings)	2	24	3000720	WASHER, 3/8" USS	1
5	300008	AXLE	1	25	300061	HEX NUT, 3/8-16 C-LOCK	5
6	6002364	FRONT SUPPORT	1	26	6000305	FOOT PEDAL	1
7	6002365	RIVET, 3/16"	5	27	300055	HEX BOLT, 3/8-16 X 3"	1
8	6002744	HOPPER HINGE BRACKET	1	28	6000370	HEX BOLT, 3/8-16 X 3-1/2"	2
9	6000463	SPACER	1	29	6000324	BUSHING	2
10	3000721	WASHER, 3/4" SAE	4	30	300052	HEX BOLT, 3/8-16 X 3/4"	1
11	6002758	FLANGE HEX NUT, 3/8"-16	4	31	401121	BRACKET, HITCH	1
12	3000711	WASHER, 5/16" USS	12	32	6000325	SPRING, LATCH	2
13	300054	SLOTTED TRUSS BOLT, 5/16-18 X 3/4"	12	33	6000309	LATCH	1
14	6000418	SPINNER GRIP NUT, 5/16-18	12	34	6000665	DRAWBAR ASSEMBLY (incl 18-33)	1
15	6002363	HANDLE, U-BOLT 3/8"-16	1	35	6002798	OWNERS MANUAL	1
16	6002547	HEX BOLT, 3/8-16 X 3/4"	2	36	6002546	HARDWARE, BOLT BAG	1
17	6000337	THIN NYLOCK HEX NUT, 3/8"-16	2	37	6000700	DECAL, OSI	1
18	300084	HAIRPIN COTTER	3	38	6000812	KIT, 3/4" POLY WHEEL BUSHINGS (Qty 4)	1
19	6000533	PIN, HITCH	1	39	6002802	DECAL, 3040P-SD180	2
20	6000369	SHOULDER BOLT, 1/2" X 3/8"	1				

## ***Notes***





Designed And Tested In Columbus, Ohio

Assembled in U.S.A of Domestic  
And Imported Components



7 16504 30408 6

**MODEL # 3040P-SD180**

2575 Ferris Road Columbus, OH 43224  
(800) 652-2321

***www.ohiosteel.com***  
**(800) 652-2321**