

# **OHIOSTEEL** INDUSTRIES

## **PROFESSIONAL GRADE**



# **3048HATV**

## **12 cu ft WELDED ATV DUMP CART**



**READ AND FOLLOW ALL SAFETY RULES AND OPERATING  
INSTRUCTIONS BEFORE USING THIS EQUIPMENT**

# ***Safety Rules***



**This is the safety alert symbol. It is used to alert you to potential personal injury hazards. Obey all safety messages that follow this symbol to avoid possible injury or death.**

Read and understand all safety rules and operating instructions before using this ATV/UTV attachment.

Follow all safety rules and operating instructions provided by your vehicle's manufacturer when using attachment.

Never allow children or untrained persons to operate vehicle or attachment.

Do not exceed the vehicle manufacturer's towed weight limit.

Reduce vehicle speed and allow extra stopping distance when towing heavy loads.

Reduce vehicle speed and towed weight when operating on slopes.

Operate up and down slopes, never across the face of slopes.

Do not carry passengers on vehicle or attachment.

Avoid sudden turns or maneuvers.

Do not tow attachment on public roadways.

Do not remove warning decals from product.

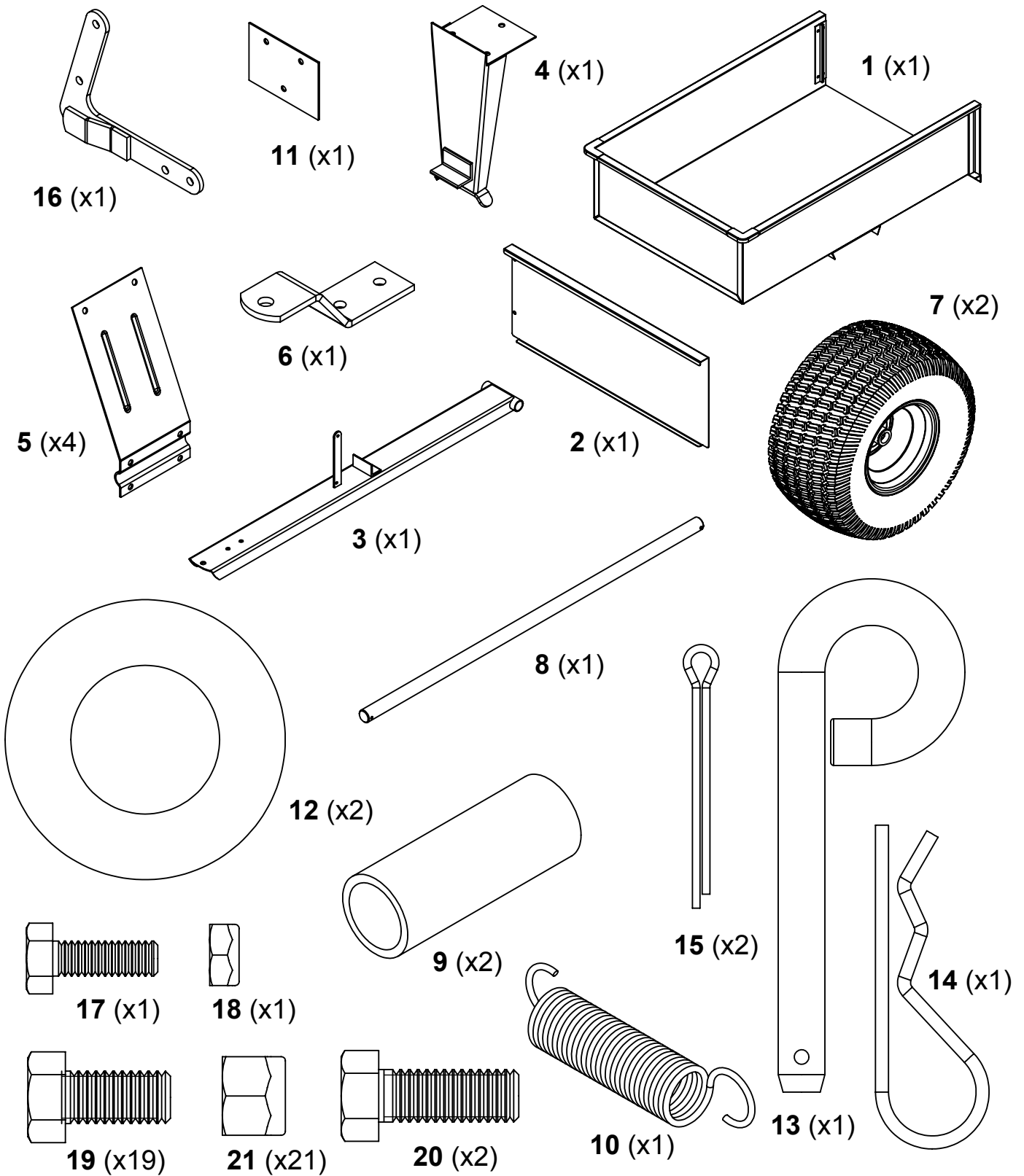
Check product for worn, loose, or damaged parts before each use. If any damage is present, repair the product before using.

Check product for loose or missing fasteners before each use. Tighten or replace fasteners as needed before using.

Do not exceed vehicle speed of 20 miles per hour when towing Dump Cart.

Do not exceed Dump Cart rated weight capacity of 1000 pounds.

# Carton Contents



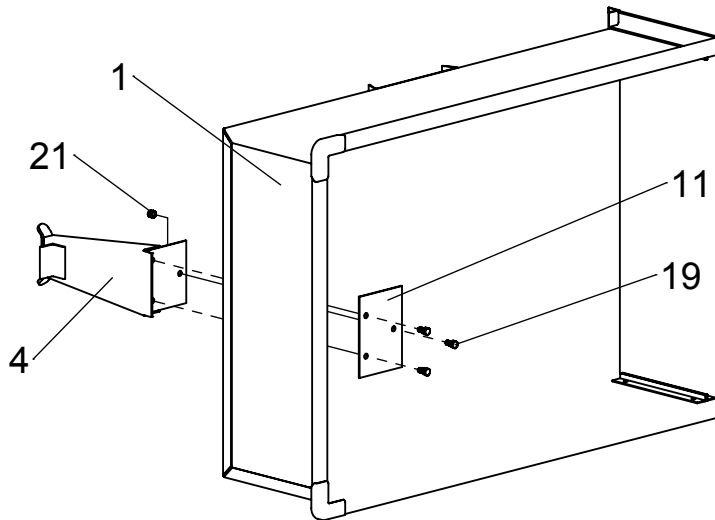
## TOOLS REQUIRED FOR ASSEMBLY:

- 1/2" Wrench and Socket
- 9/16" Wrench and Socket
- 7/16" Wrench and Socket
- Needle-Nose Pliers
- Grease Gun

# Assembly Instructions

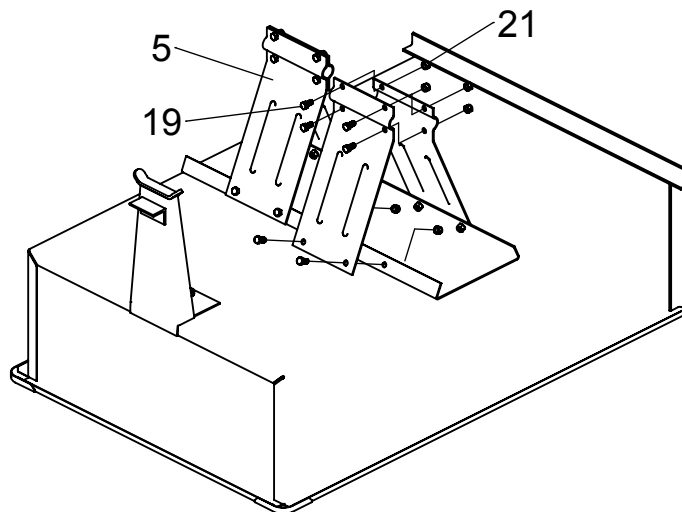
**1**

Attach front support and backing plate to body securely with hardware as shown.



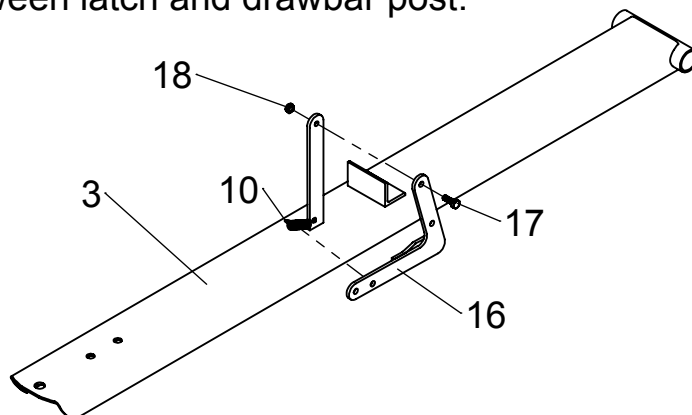
**2**

Attach axle holder plates to body loosely with hardware as shown.



**3**

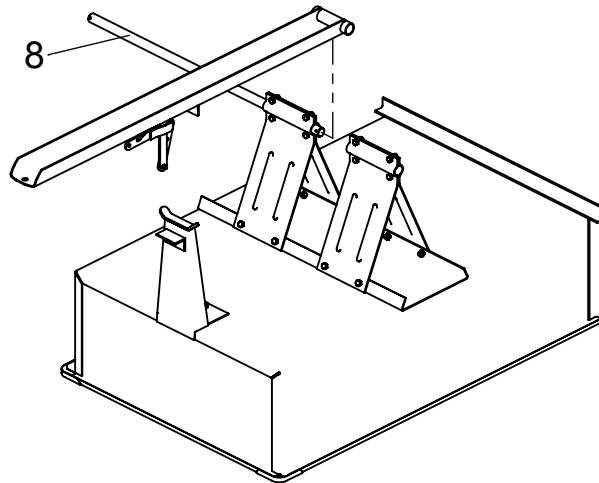
Attach latch and hitch bracket to drawbar with hardware as shown. Secure latch spring between latch and drawbar post.



# Assembly Instructions

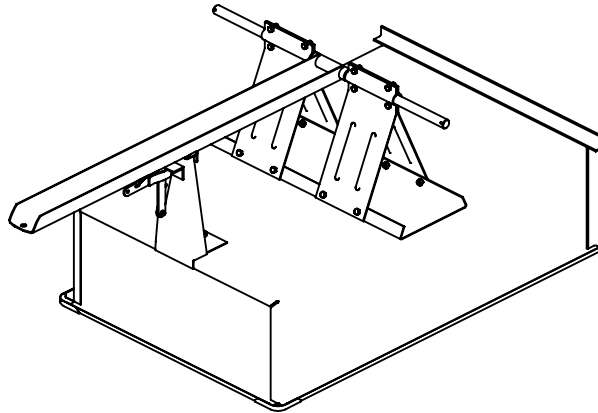
**4**

Insert axle into undercarriage halfway as shown.



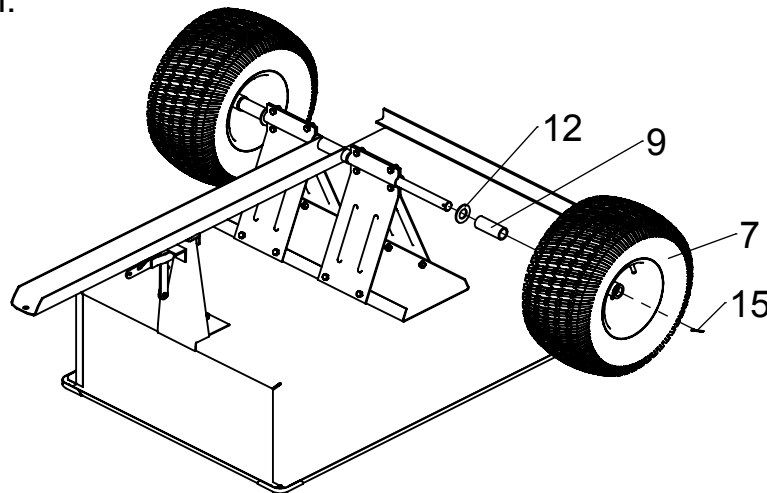
**5**

Slide axle completely through undercarriage; be sure to catch the drawbar when sliding the axle. Align drawbar with the front support and press down firmly to latch.



**6**

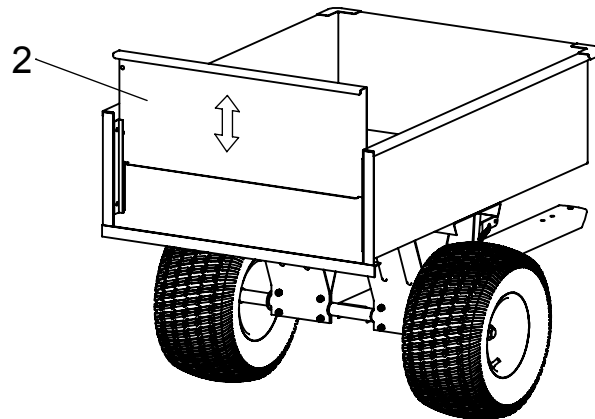
Attach wheels to axle with spacers and washers, secure with cotter pins as shown.



# Assembly Instructions

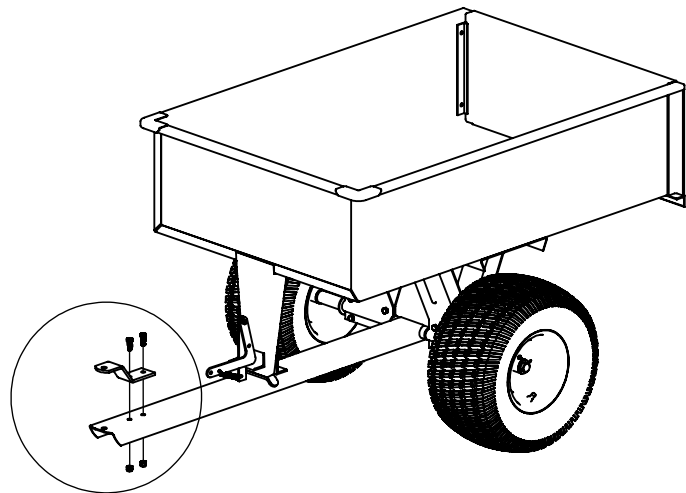
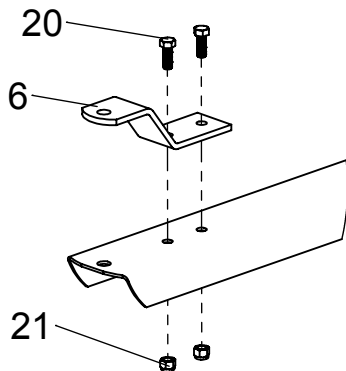
**7**

Attach tailgate to body as shown. No hardware is required, tailgate should move freely up or down.



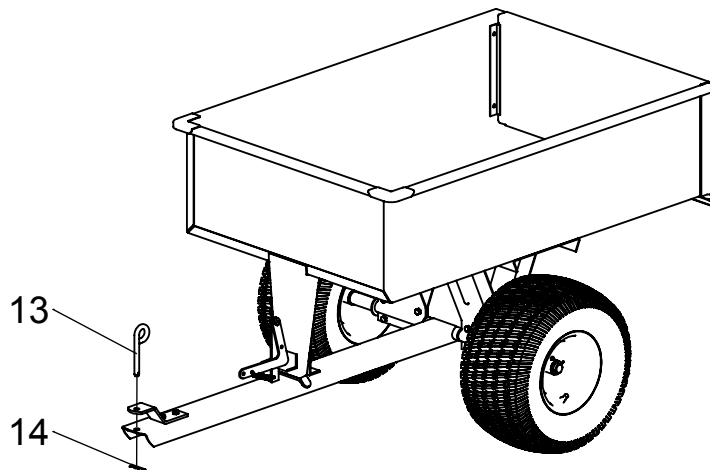
**8**

Attach hitch bracket to drawbar with hardware as shown. Tighten all hardware at this time.



**9**

Install hitch pin and hairpin to secure to attachment vehicle.



# ***Operating Instructions***

## **Before Using Dump Cart:**

1. Apply lithium grease to wheels using grease gun until grease can be seen squeezing out from both sides of the wheel.
2. Check tire pressure and inflate to 24 psi if needed.
3. Read all Safety Rules found on page 1.

## **How to Use Dump Cart:**

1. Attach Dump Cart to your ATV or UTV.
2. Do not exceed 1000 pounds when loading material into the cart body.
3. Distribute the weight of the load as evenly as possible in the cart body for best handling.
4. When hauling heavy loads, verify that your vehicle has adequate towing and braking capacity.
5. Do not exceed 20 miles per hour when towing Dump Cart.

## **How to Empty Dump Cart:**

1. Pull hand lever up to release the latch mechanism.
2. Lower the body and guide the latch into the drawbar and relatch.

## **Periodic Maintenance:**

- Tighten fasteners as needed before each use
- Check tire pressure before each use
- Grease wheels annually

# ***Warranty***

If this product fails due to a defect in material or workmanship within TWO YEARS from the date of purchase, we will at our option repair or replace it free of charge. This warranty excludes tires and wheels, which are expendable and become worn during normal use.

This warranty does not cover:

- Repairs necessary because of operator abuse or negligence.
- Equipment used for commercial or rental purposes.
- Paint that is worn or faded due to normal use or exposure.

To arrange for product repair call 1-800-652-2321, or return this product to place of purchase for replacement.

This warranty gives you specific legal rights, and you may also have other rights which may vary from state to state. This warranty applies only while this product is in use in the United States.

In the space below record the purchase date of your Dump Cart.

Model Number **3048HATV** \_\_\_\_\_

Purchase Date \_\_\_\_\_

Keep this Owner's Manual and your receipt in a safe place for future reference.

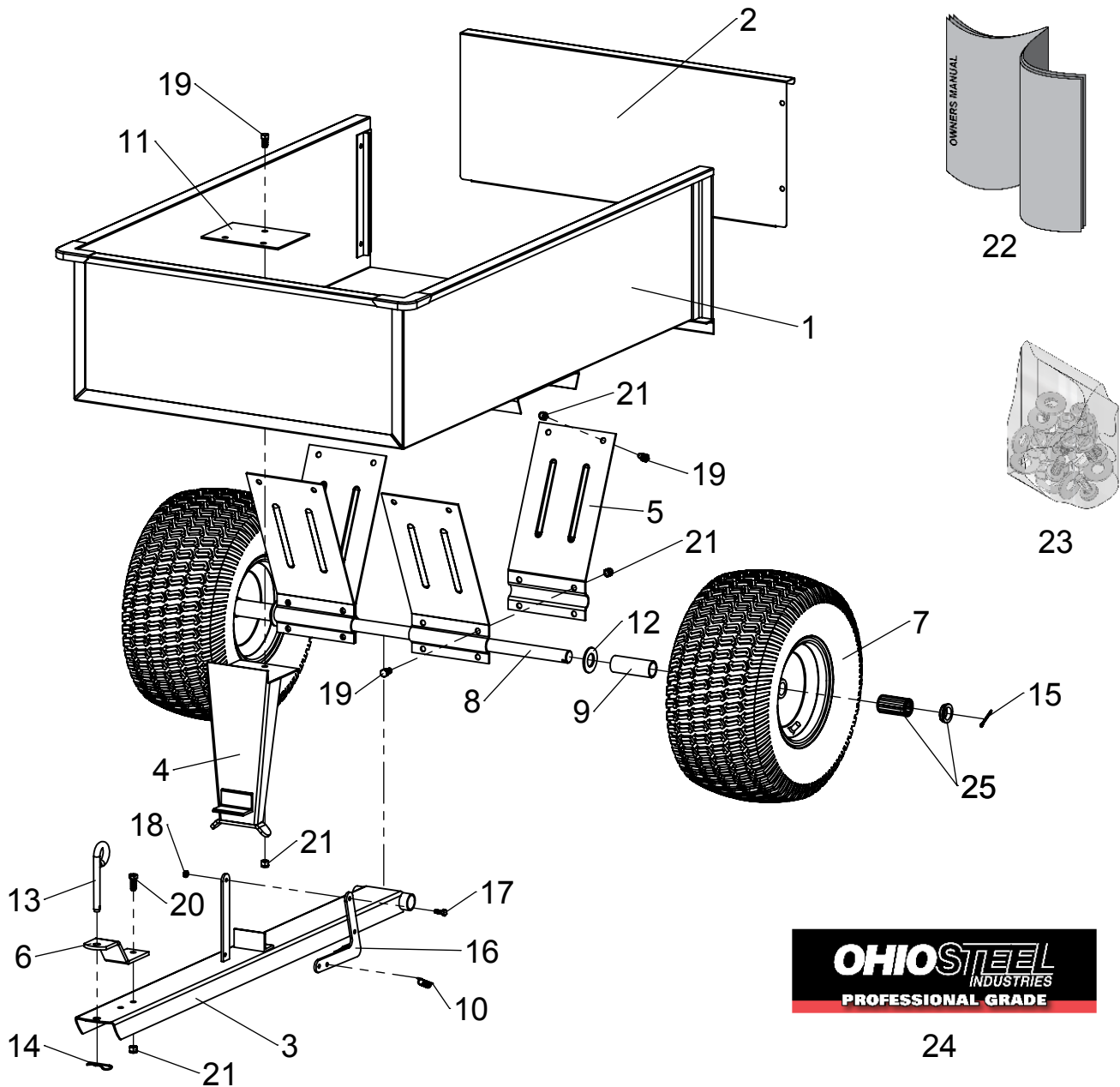
After the two year warranty period all replacement parts may be ordered by calling **1-800-652-2321**.

When ordering replacement parts, always give the following information:

- Product **12 cu ft WELDED STEEL ATV DUMP CART**
- Model Number **3048HATV** \_\_\_\_\_
- Part Number \_\_\_\_\_
- Part Description \_\_\_\_\_



# Repair Parts



ITEM	PART NO	DESCRIPTION	QTY	ITEM	PART NO	DESCRIPTION	QTY
1	519001	WELDED BODY, 3048HATV	1	14	300084	HAIRPIN COTTER, 0.093" X 2-5/16"	1
2	401041	TAILGATE	1	15	300081	COTTER PIN, 1/8" X 1-1/2"	2
3	519011	WELDED DRAWBAR	1	16	519031	WELDED LATCH ARM	1
4	519021	FRONT SUPPORT	1	17	6000420	1/4-20x3/4" HEXHEAD BOLT	1
5	419271	AXLE HOLDER PLATE	4	18	300065	1/4" -20 LOCK NUT	1
6	419121	HITCH BRACKET	1	19	300052	HEX BOLT, 3/8-16 X 3/4"	19
7	6000727	18" WHEEL	2	20	3000511	HEX BOLT, 3/8-16 X 1"	2
8	300002	AXLE	1	21	3000618	NYLON INSERT LOCKNUT, 3/8-16	21
9	3001211	SPACER	2	22	3190448	OWNERS MANUAL	1
10	300132	LATCH SPRING	1	23	3190360	HARDWARE BOLT BAG	1
11	419281	BACKING PLATE	1	24	300111	DECAL, OSI	2
12	300076	WASHER, 1" SAE	2	25	6000818	KIT, 1" BEARING (for set of 2 wheels)	1
13	6000533	PIN, HITCH	1				

# **OHIO**STEEL INDUSTRIES

DESIGNED AND TESTED IN COLUMBUS, OHIO  
MANUFACTURED IN THE U.S.A. FROM DOMESTIC  
AND IMPORTED COMPONENTS



**MODEL # 3048HATV**

2575 Ferris Road Columbus, OH 43224  
(800) 652-2321

***www.OHIOSTEEL.com***

**(800) 652-2321**