

Model Number 60ZTSB 60" Zero Turn Mower Snow Blade



Warnings and Safety Precautions

- Use caution when operating on slopes.
- Mower traction on snow and ice may vary, use caution.
- Never leave mower running while adjusting blade.
- Never put body parts under snow blade while raised.
- Clear plowing area of all objects and note locations of potential hazards.
- Snow blade may tilt forward when hitting and object or on uneven pavement. Back up slowly, snow blade can throw debris back toward operator.
- Use caution when plowing large amounts of snow. It is a good practice to plow multiple times during large snow falls.
- Do not drive into snow piles at high speeds.
- Check all bolts for tightness before operating snow blade.

Operation Instructions

- While blade is touching ground, slide adjustment tube (4) vertically, up or down, until rotating lift tube (5) is horizontal and parallel with ground. Insert bolt (20) and tighten nut (21).
- To positioning the collar (7) place pin against bottom of side support bracket (6).
- Adjust plow glides (13) such that the bottom of the blade is approximately 1/2" above ground. Smooth surfaces require a lower setting or may not require plow glides at all.
- Adjust foot lift (10), up or down, such that approximately 6-8" of clearance exist on ZTR foot deck. Secure using bolt (23) in welded nut on the rotating lift tube (5).
- Begin plowing at a slow speed to insure proper function of all parts.

Tools Required

- 1/2", 9/16", 3/4" and 1-1/8" sockets and / or wrenches.
- Adjustable wrench.

Assembly Instructions

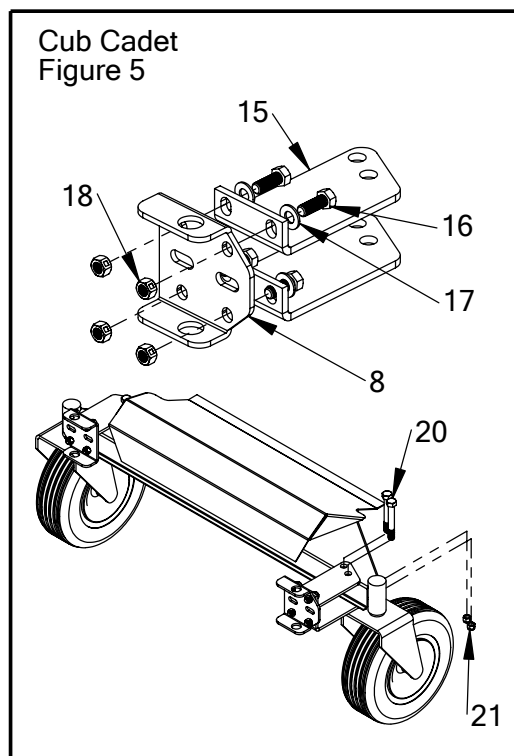
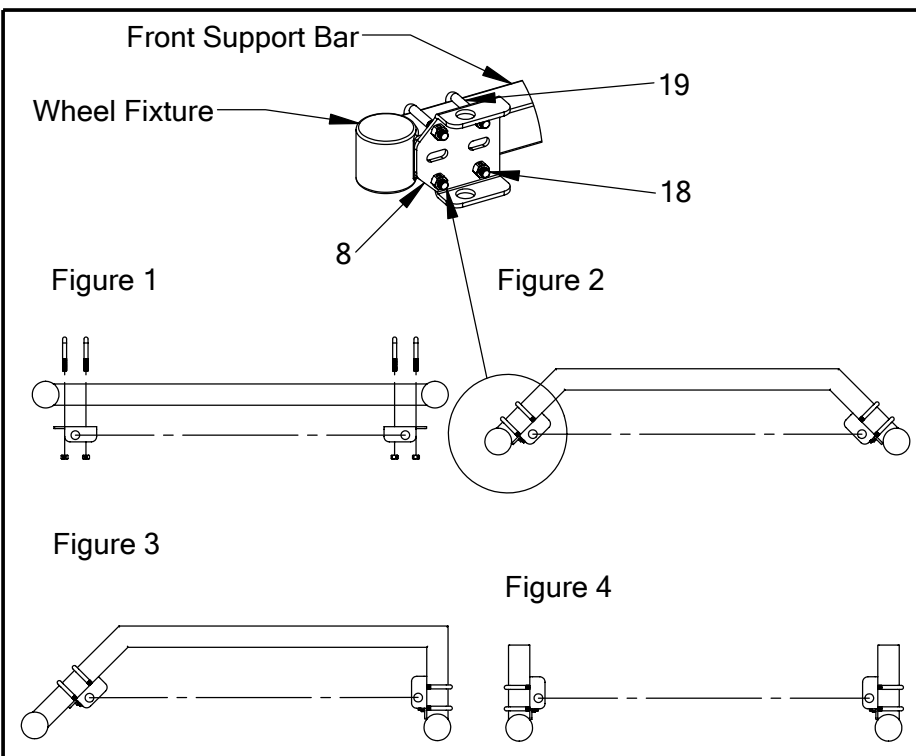
Snow blade mounting type. Figures 1-4 use step 1a. Figure 5, step 1b, covers installation on Cub Cadet tractors. Assembly for all types is the same past the first step.

- 1a. Loosely attach adaptor plate (8) to front support bar on tractor using U bolts (19) and 3/8" lock nut (18). Position noched section toward wheel. Locate as close as possible to outer edges by welds at wheel fixture.

Check for interference with caster and adjust accordingly.

- 1b. Loosely attach adaptor plate (8) to Cub Cadet plates (15) using a 3/8" x 1" hex bolt (16), 3/8" flat washer (17), and 3/8" locknut (21). Position noched section toward wheel. Slide assembly onto front of tractor and loosely attach using 1/2" x 3-1/2" hex bolt (20) and 1/2" locknut (21). Slide the assembly toward the tractor to where the adaptor plate and hex bolt are wedged.

Check for interference with caster and adjust accordingly.



Step 2.

Slide collar (7) onto rotating lift bar (5). Keep welded bar on the tractor side.

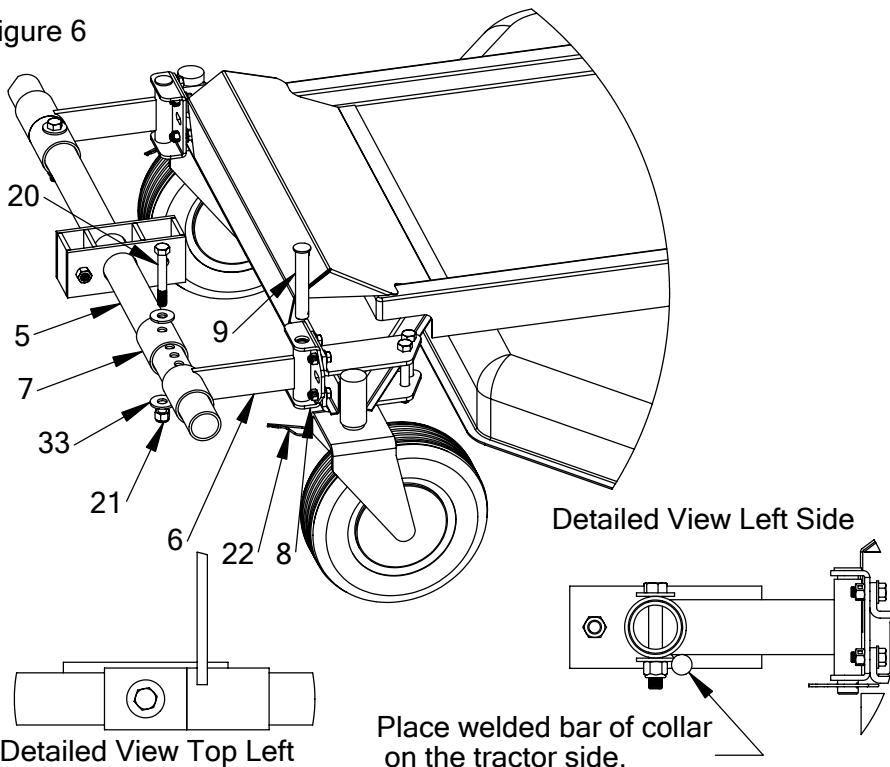
Slide support brackets (6) onto rotating lift bar (5). Keep the narrow side on the inside to allow the collar welded bar to touch support bar (6).

Attach support brackets (6) onto adaptor plate (8) using pin (9) and a hair pin (22).

Slide collar (7) against support brackets (6). Position collar (7) to nearest hole and secure with 1/2" x 3-1/2" hex bolt (20), two 1/2" flat washers (33) and 1/2" locknut (21). Note: may need to adjust adapter assembly location to get a better fit. Check for wheel clearance.

Tighten all bolts from Step 1.

Figure 6



Step 3. Figure 7

Attach foot bar (11) to foot lift (10) using 3/8" x 1-3/4" hex bolt (24) and 3/8" lock nut (18).

Insert foot lift into front opening of rotating lift bar (5). Then secure using 1/2" pointed bolt (23) and welded nut on rotating lift bar.

Insert adjustment tube (4) into front of rotating lift bar (5). Then secure using 1/2" x 3-1/2" hex bolt (23) and 1/2" lock nut (21).

Insert square caps (34) into ends of foot bar (11). Insert rotating lift cap (35) into ends of rotating lift bar (5).

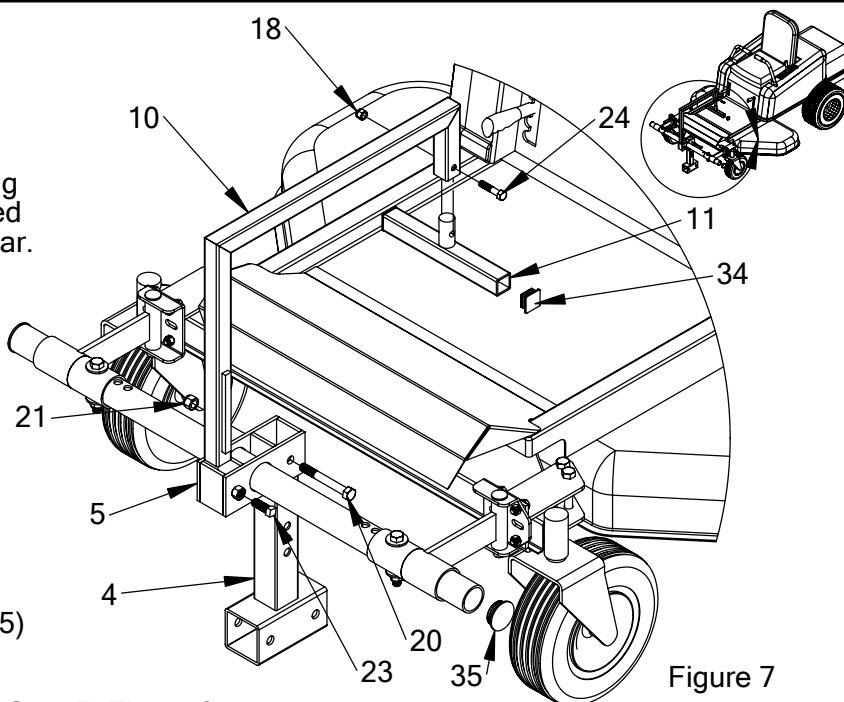


Figure 7

Step 4. Figure 8

Attach wear strip (12) to the front of the snow blade (1). Use 5/16" x 3/4" bolts (25) and 5/16" locknuts (26).

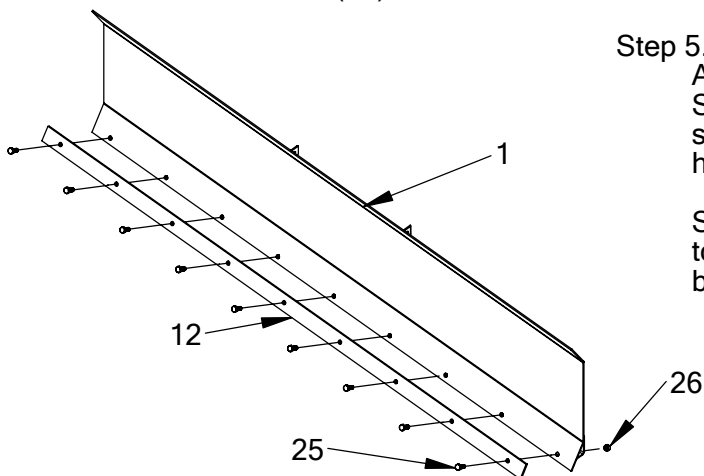


Figure 8

Step 5. Figure 9

Attach support tube (3) to pivot plate (2). Use 3/4" x 4" hex bolt (28) and 3/4" locknut (29). Insert handle pivot pin (30) through pivot plate and support tube and attach with hairpin (22) as shown.

Attach glide (13) using 1/2" x 1" hex bolt (31).

Step 5. Figure 9

Attach springs (27) to snow blade (1). Next attach Springs (27) to pivot plate (2). Attach pivot plate to snow blade (1). Use blade pivot rod (14) and hairpin (22).

Springs will be under load and will require some force to install pivot pin. Caution never put any part of the body between pivot plate (2) and snow blade (1).

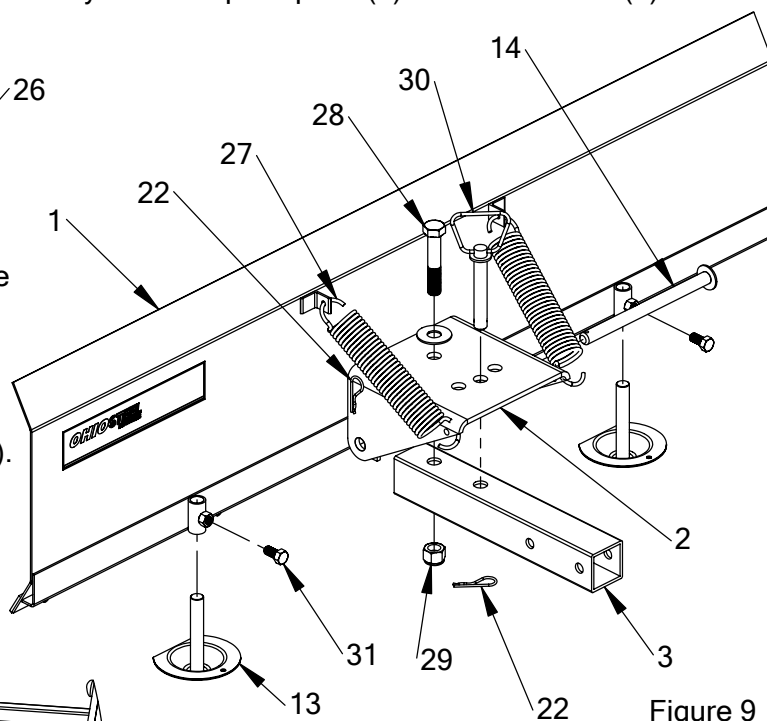


Figure 9

Step 6. Figure 10

Insert support tube (3) into adjustment tube (4). Insert 1/2" x 4" hex bolt (32) through holes and tighten 1/2" locknut (21).

Step 7.

Adjust to desired height. Tighten all bolts.

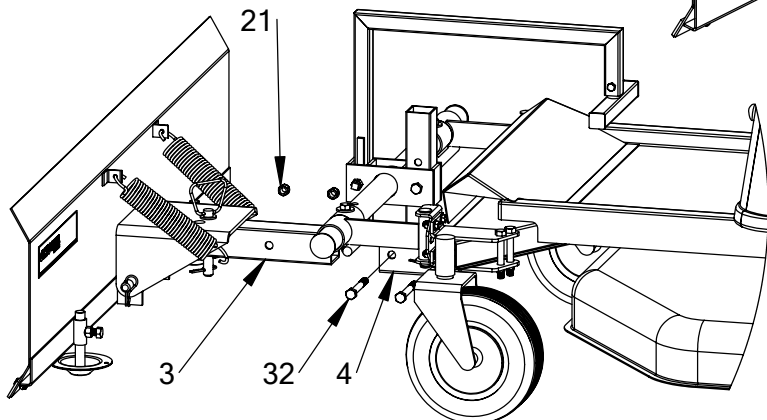
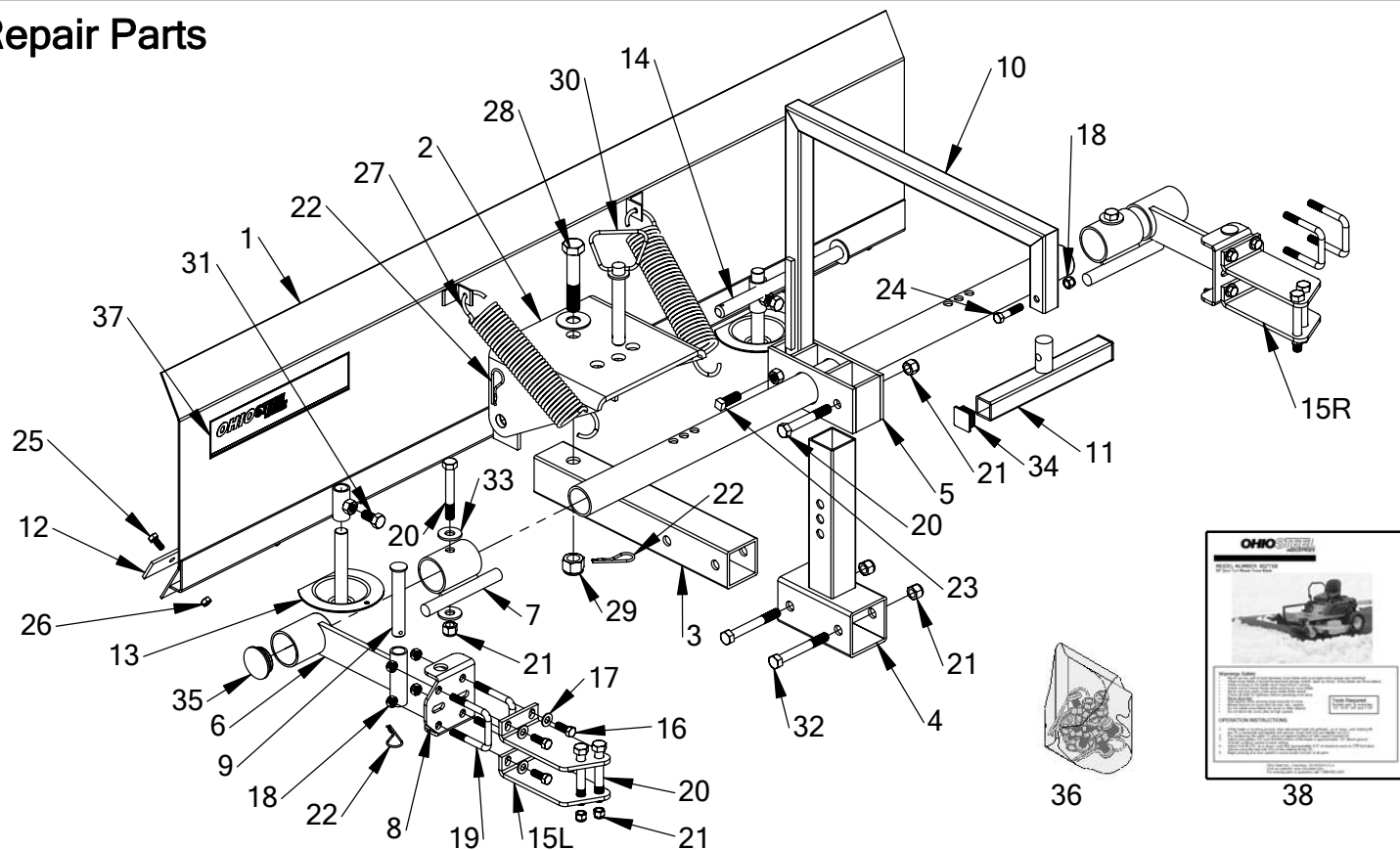


Figure 10

Repair Parts



Item Num.	Part Number	Part Description	Quantity	Item Num.	Part Number	Part Description	Quantity
1	60ZTSB-01	Snow Blade	1	20	STDBH5003500	Hex Bolt 1/2" X 3-1/2"	7
2	60ZTSB-02	Pivot Plate	1	21	STDNN500	Nylock Nut 1/2"	9
3	60ZTSB-03	Support Tube	1	22	STDPH7	Hair Pin	4
4	60ZTSB-04	Adjustment Tube Weldment	1	23	STDBS5001500	Pointed Bolt 1/2" X 1-1/2"	1
5	60ZTSB-05	Rotating Lift Weld	1	24	STDBH3751750	Hex Bolt 3/8" X 1-3/4"	1
6	60ZTSB-06	Side Support Bracket	2	25	STDBH313750	Hex Bolt 5/16" X 3/4"	9
7	60ZTSB-07	Collar Weld	2	26	STDNC313	Lock Nut 5/16"	9
8	60ZTSB-08	Adaptor Plate (Mounting)	2	27	60ZTSB-27	Blade Spring 9-1/2"	2
9	60ZTSB-09	Support Pin	2	28	STDBH7504000	Hex Bolt 3/4" X 4"	1
10	60ZTSB-10	Foot Lift	1	29	STDNN750	Nylock Nut 3/4"	1
11	60ZTSB-11	Foot Kick Weld	1	30	60ZTSB-30	Handle Pivot Pin	1
12	60ZTSB-12	Wear Strip	1	31	STDBH5001000	Hex Bolt 1/2" X 1"	2
13	60ZTSB-13	Glide Weldment	2	32	STDBH5004000	Hex Bolt 1/2" X 4"	2
14	60ZTSB-14	Blade Pivot Rod	1	33	STDFW500	Flat Washer 1/2"	4
15L	60ZTSB-15L	Cadet Mounting Plate Left	2	34	60ZTSB-34	Square Cap	2
15R	60ZTSB-15R	Cadet Mounting Plate Right	2	35	60ZTSB-35	Rotating Lift Cap	2
16	STDBH3751000	Hex Bolt 3/8" X 1"	8	36	60ZTSB-36	Hardware Bag	1
17	STDFW375	Flat Washer 3/8"	8	37	60ZTSB-37	Decal	1
18	STDNC375	Lock Nut 3/8"	9	38	60ZTSB-38	User Guide	1

LIMITED ONE-YEAR WARRANTY

If this product fails due to a defect in material or workmanship within one year from the date of purchase, Ohio Steel will at its option repair or replace it free of charge. This warranty excludes glide weldment, wear strip and blade springs, which are expendable and become worn during normal use.

This warranty does not cover:

- Repairs necessary because of operator abuse or negligence.
- Equipment used for commercial or rental purposes.

Contact Ohio Steel to arrange for product repair, or return this product to place of purchase for replacement.

This warranty gives you specific legal rights, and you may also have other rights which may vary from state to state. This warranty applies only while this product is in use in the United States.

When ordering repair parts always give the following information,
PRODUCT NAME, MODEL NUMBER, PART NUMBER, and PART DESCRIPTION.

For missing parts or questions call 1-800-652-2321 www.ohiosteel.com