



DC 1000S

Article 588 20 88-04

12 cu ft STEEL SWIVEL DUMP CART

U.S. Patent No. 8,496,298



**READ AND FOLLOW ALL SAFETY RULES AND OPERATING
INSTRUCTIONS BEFORE USING THIS EQUIPMENT**

Safety Rules



This is the safety alert symbol. It is used to alert you to potential personal injury hazards. Obey all safety messages that follow this symbol to avoid possible injury or death.

Read and understand all safety rules and operating instructions before using this tractor attachment.

Follow all safety rules and operating instructions provided by your vehicle's manufacturer when using attachment.

Never allow children or untrained persons to operate vehicle or attachment.

Do not exceed the vehicle manufacturer's towed weight limit.

Reduce vehicle speed and allow extra stopping distance when towing heavy loads.

Reduce vehicle speed and towed weight when operating on slopes.

Operate up and down slopes, never across the face of slopes.

Do not carry passengers on vehicle or attachment.

Avoid sudden turns or maneuvers.

Do not tow attachment on public roadways.

Do not remove warning decals from product.

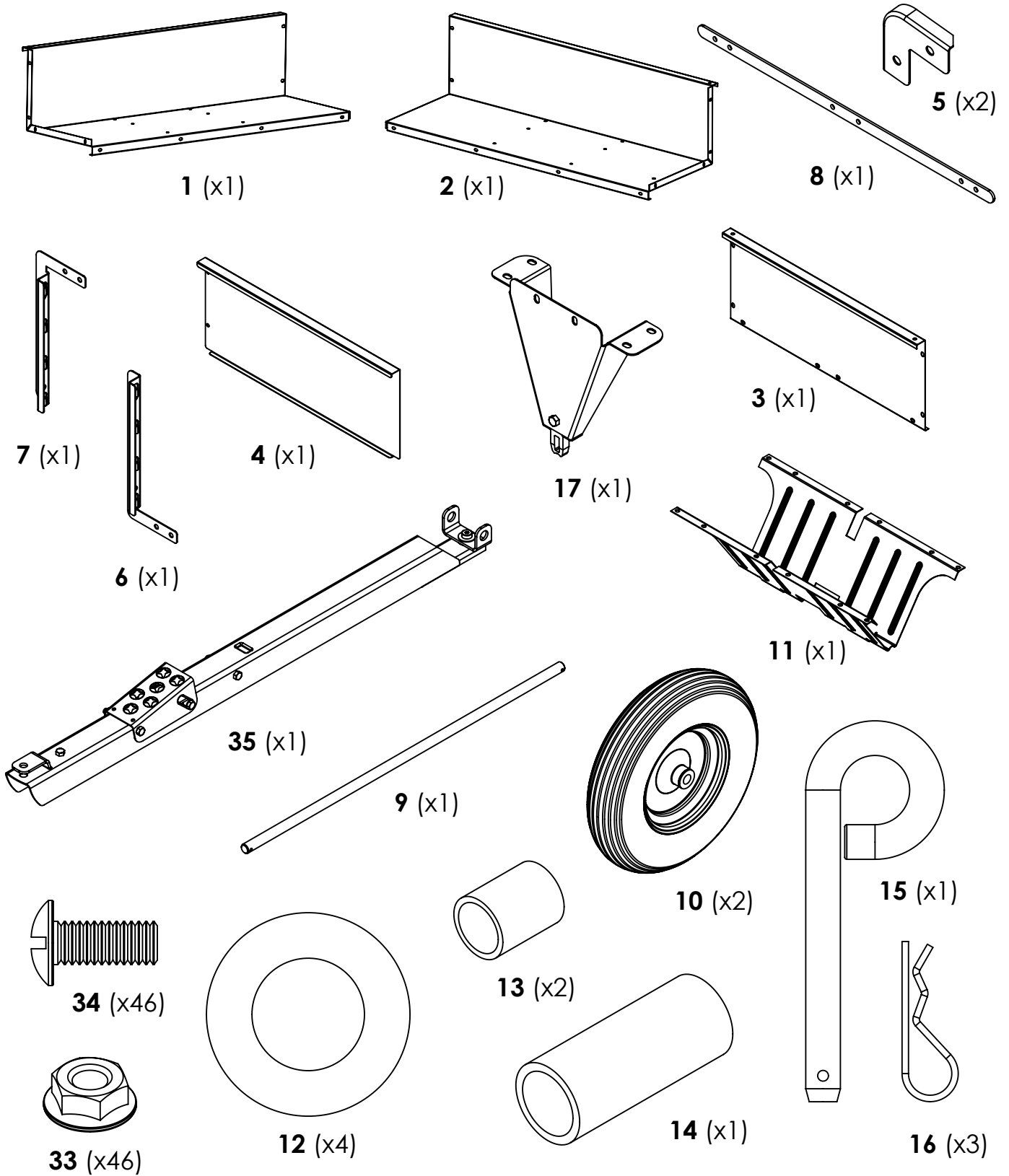
Check product for worn, loose, or damaged parts before each use. If any damage is present, repair the product before using.

Check product for loose or missing fasteners before each use. Tighten or replace fasteners as needed before using.

Do not exceed vehicle speed of 6 miles per hour when towing Dump Cart.

Do not exceed Dump Cart rated weight capacity of 1000 pounds.

Carton Contents



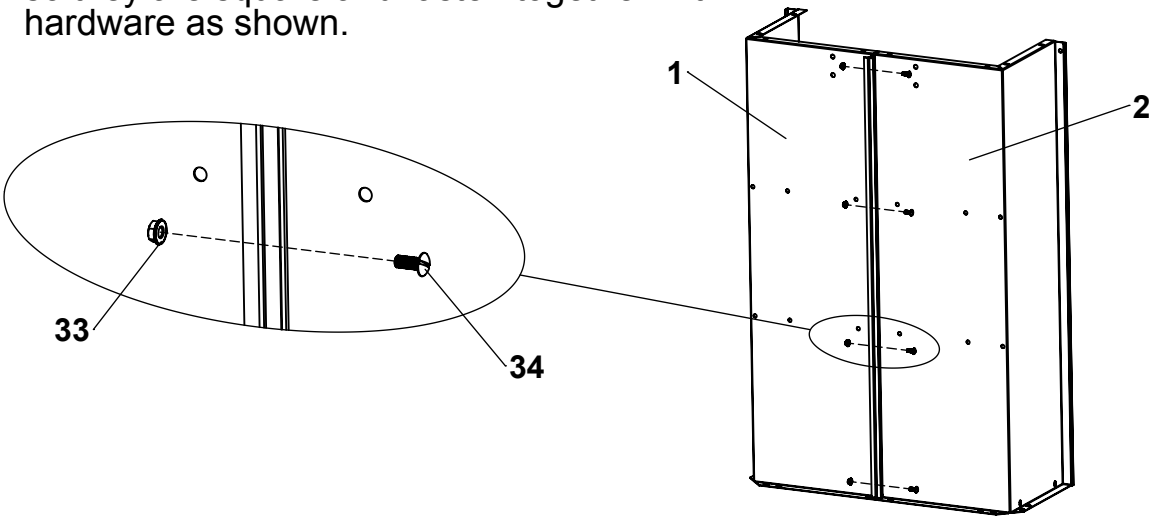
TOOLS REQUIRED FOR ASSEMBLY:

- 1/2" Wrench or Socket
- Large Flat Screwdriver

Assembly Instructions

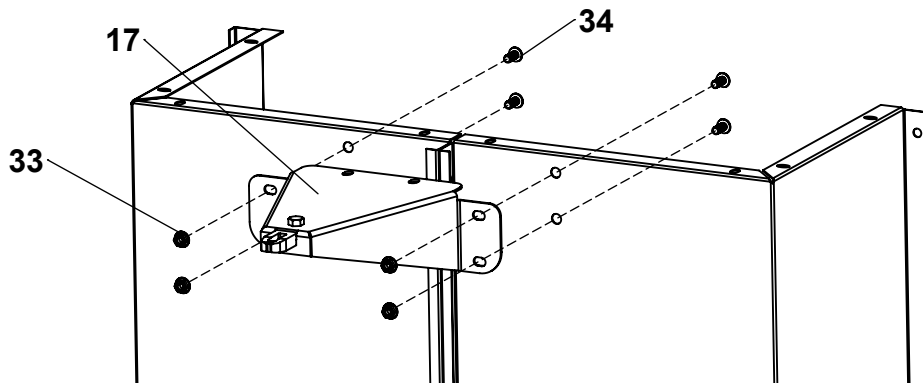
1

Place body halves on a smooth, flat surface so they are square and fasten together with hardware as shown.



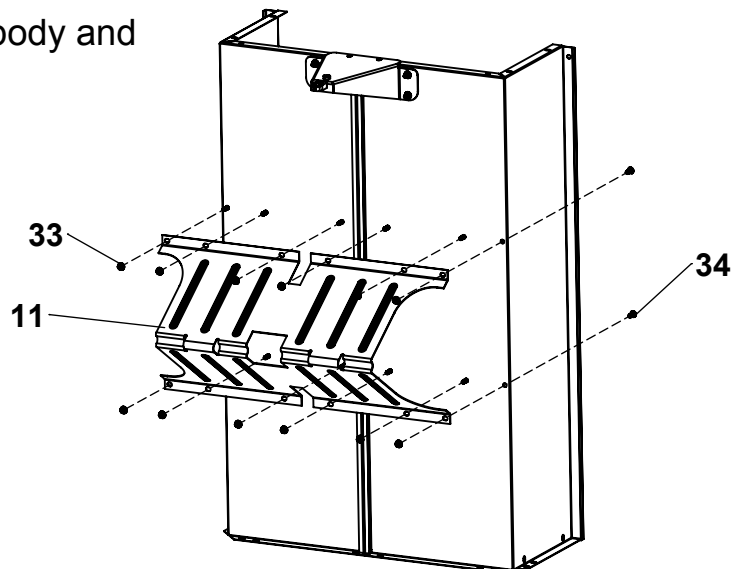
2

Attach Front Support to Poly Body and tighten hardware as shown.



3

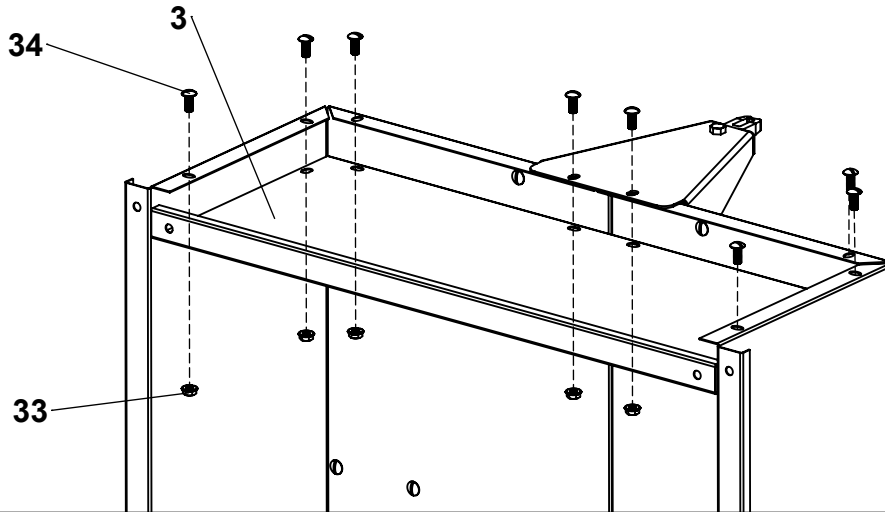
Attach undercarriage to body and tighten hardware.



Assembly Instructions

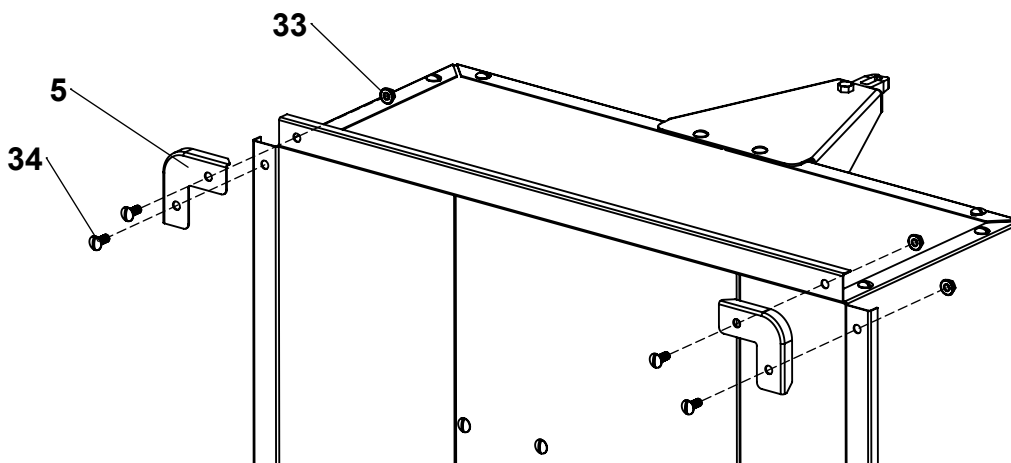
4

Attach front gate to inside of body as shown and tighten hardware.



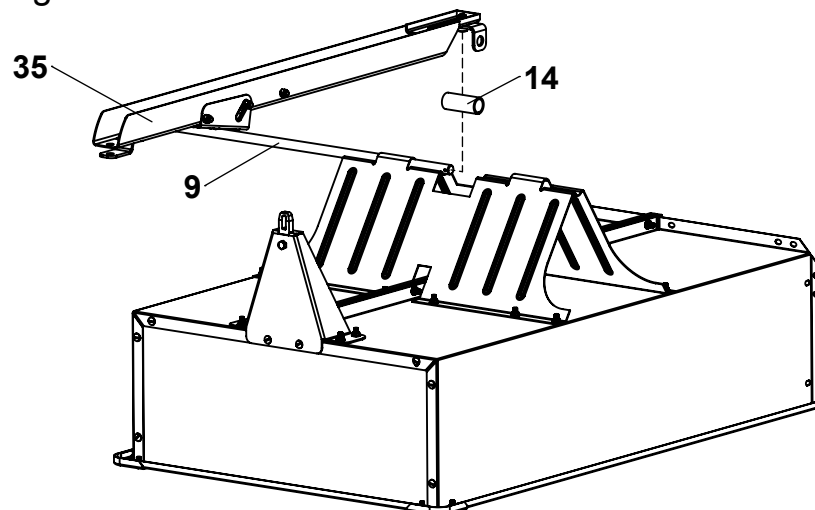
5

Slide Washers and Wheels onto Axle and secure with Hairpins as shown.



6

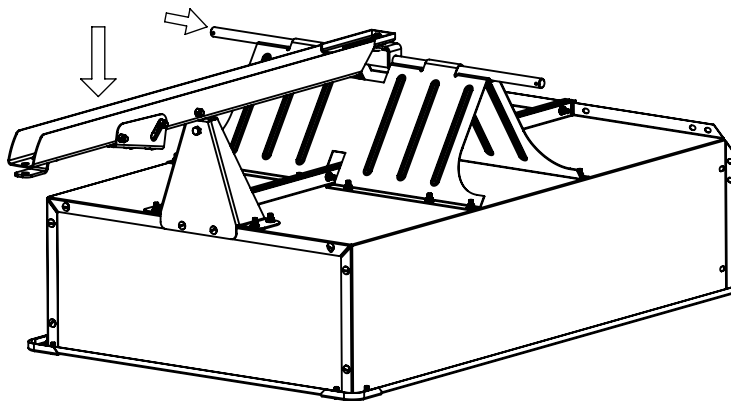
Insert axle into undercarriage halfway as shown. Center spacer inside swivel clevis and align with axle.



Assembly Instructions

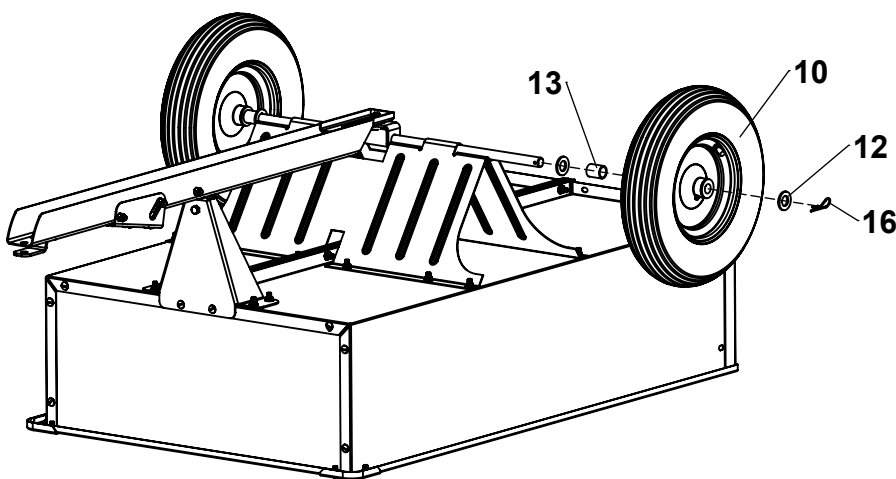
7

Slide axle completely through undercarriage; be sure to catch the drawbar when sliding the axle. Align drawbar with the front support and press down to latch.



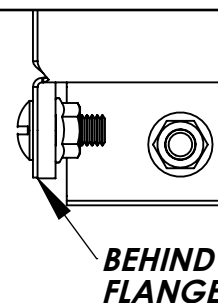
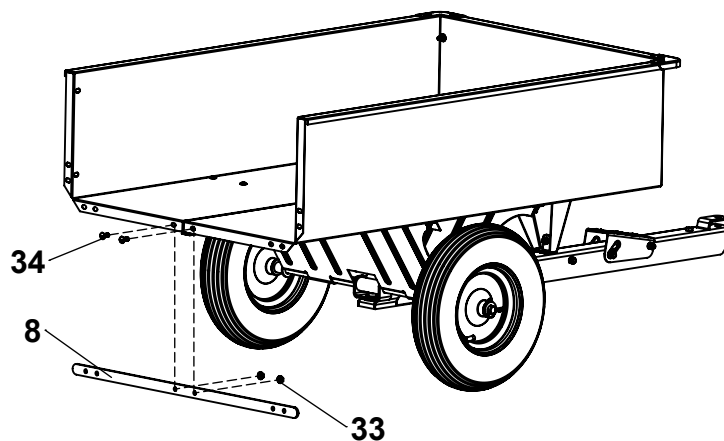
8

Slide washers, spacers, and wheels onto axle and secure with hairpins as shown.



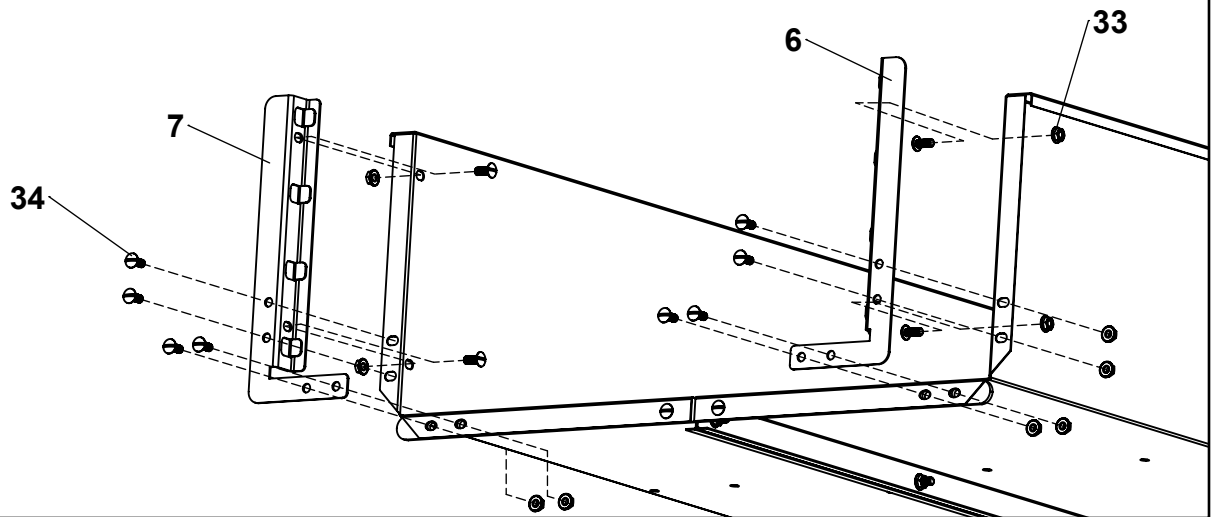
9

Attach the support bar to body behind flange loosely as shown.

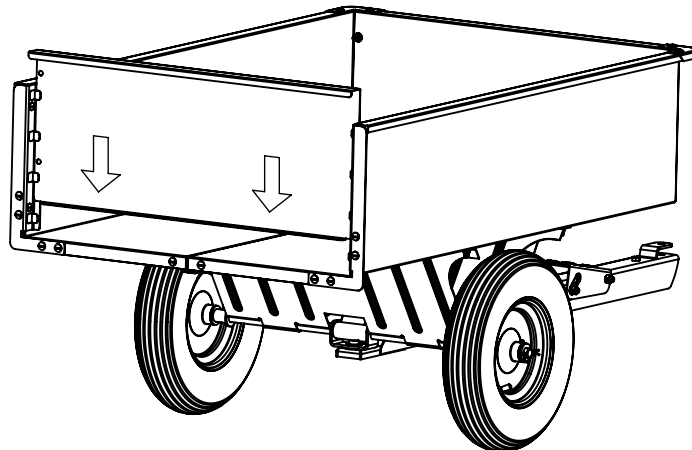


Assembly Instructions

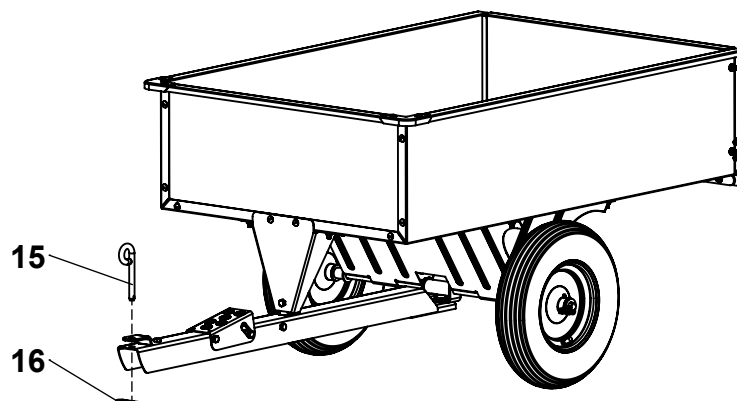
- 10** Attach corner gussets to rear and sides of body and tighten with hardware as shown.



- 11** Attach tailgate to body as shown. No hardware required, tailgate should move freely up or down.



- 12** Install hitch pin and hairpin to secure to attachment vehicle.



Operating Instructions

Before Using Dump Cart:

1. Check tire pressure and inflate to 30 psi if needed.
2. Read all Safety Rules found on page 1.

How to Use Dump Cart:

1. Attach Dump Cart to your tractor using the supplied hitch pin.
2. Do not exceed 1000 pounds when loading material into the cart body.
3. Distribute the weight of the load as evenly as possible in the cart body for best handling.
4. When hauling heavy loads, verify that your vehicle has adequate towing and braking capacity.
5. Do not exceed 6 miles per hour when towing Dump Cart.

How to Empty Dump Cart:

1. Step down the foot pedal to release the latch mechanism.
2. Lift the body and swivel as desired to guide the material to preferred location.
3. Lift the body entirely and empty material.
4. Lower the body and guide the latch into the drawbar and relatch.

Periodic Maintenance:

- Tighten fasteners as needed before each use
- Check tire pressure before each use

Warranty

If this product fails due to a defect in material or workmanship within THREE YEARS from the date of purchase, we will at our option repair or replace it free of charge. This warranty excludes tires and wheels, which are expendable and become worn during normal use.

This warranty does not cover:

- Repairs necessary because of operator abuse or negligence.
- Equipment used for commercial or rental purposes.
- Paint that is worn or faded due to normal use or exposure.

To arrange for product repair call 1-800-652-2321, or return this product to place of purchase for replacement.

This warranty gives you specific legal rights, and you may also have other rights which may vary from state to state. This warranty applies only while this product is in use in the United States.

In the space below record the purchase date of your Dump Cart.

Model Number **DC 1000S / Article 588 20 88-04**

Purchase Date _____

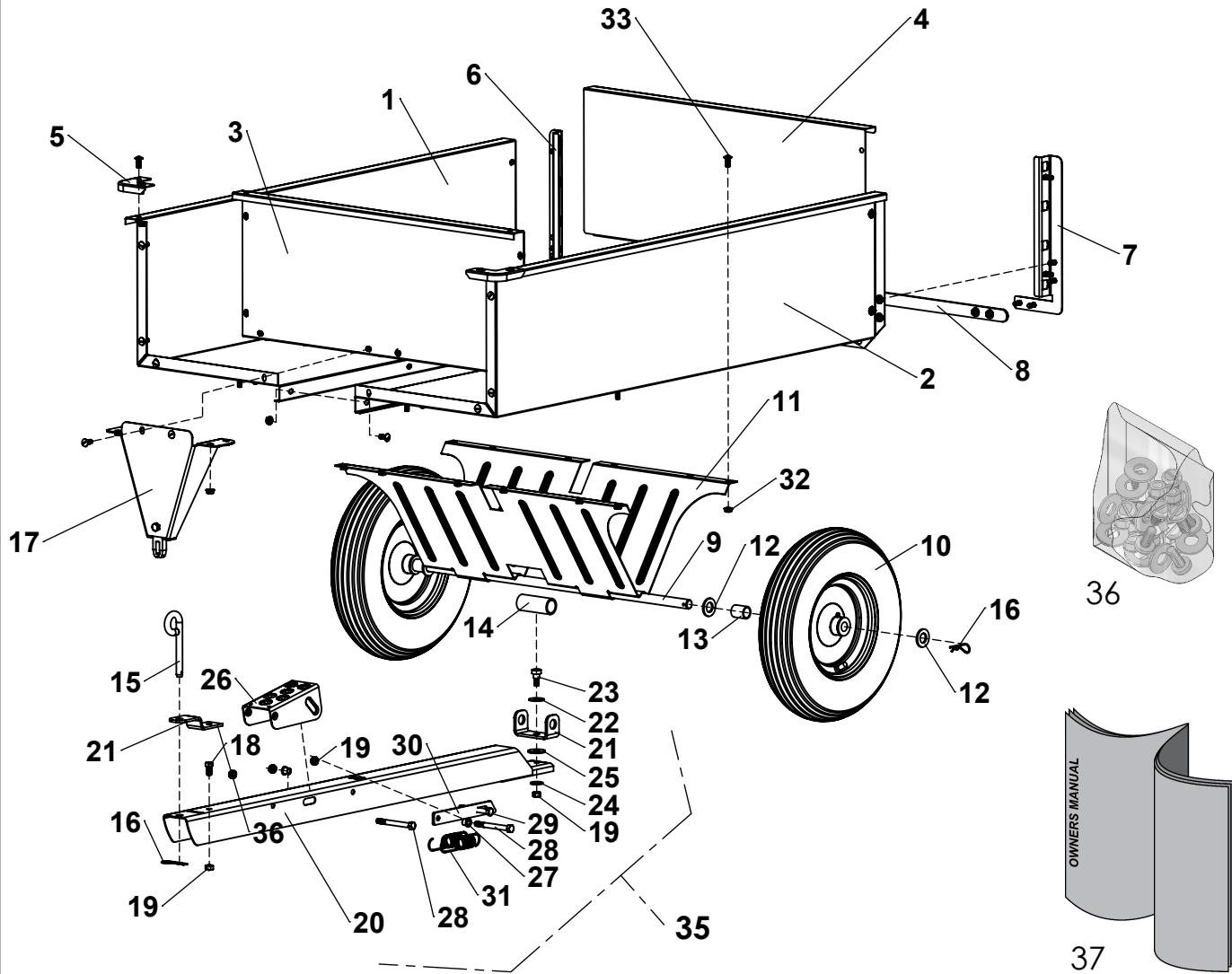
Keep this Owner's Manual and your receipt in a safe place for future reference.

After the three year warranty period all replacement parts may be ordered by calling **1-800-652-2321**.

When ordering replacement parts, always give the following information:

- Product **12 cu ft STEEL SWIVEL DUMP CART**
- Model Number **DC 1000S / Article 588 20 88-04**
- Part Number _____
- Part Description _____

Repair Parts



ITEM	PART NO	DESCRIPTION	QTY	ITEM	PART NO	DESCRIPTION	QTY
1	401011-O	BODY HALF, RIGHT	1	20	6000383	DRAWBAR, FORMED	1
2	401021-O	BODY HALF, LEFT	1	21	401121	BRACKET, HITCH	1
3	401031-O	GATE, FRONT	1	22	6000548	CLEVIS, SWIVEL	1
4	6003359-HG	TAILGATE	1	23	6000368	WASHER, SPRING	1
5	401051-O	CORNER	2	24	6000369	SHOULDER BOLT, 1/2" X 3/8"	1
6	401071-O	RETAINER GATE, RIGHT	1	25	3000720	WASHER, 3/8" USS	1
7	401081-O	RETAINER GATE, LEFT	1	26	300075	WASHER, 1/2" USS	1
8	401131-O	BAR SUPPORT, REAR	1	27	6000305-HG	FOOT PEDAL	1
9	300001	AXLE	1	28	6000324	BEARING	2
10	6002415	WHEEL	2	29	6000370	HEX BOLT, 3/8-16 X 3-1/2"	2
11	401061-HG	UNDERCARRIAGE	1	30	300055	HEX BOLT, 3/8-16 X 3"	1
12	3000721	WASHER, 3/4" SAE	4	31	6000309	LATCH	1
13	6000105	SPACER, SHORT	2	32	6000325	SPRING, LATCH	2
14	6000463	SPACER, LONG	1	33	6000418	SPINNER GRIP NUT, 5/16-18	46
15	6000533	PIN, HITCH	1	34	300054	SLOTTED TRUSS BOLT, 5/16-18 X 3/4"	46
16	300084	HAIRPIN COTTER, 0.093" X 2-5/16"	3	35	6000665-H	DRAWBAR ASSEMBLY	1
17	6000310-HG	FRONT SUPPORT	1	36	6000698	HARDWARE BOLT BAG	1
18	300052	HEX BOLT, 3/8-16 X 3/4"	2	37	6002409	OWNER'S MANUAL	1
19	300061	HEX NUT, 3/8-16 C-LOCK	6				

Notes



Designed And Tested In Columbus, Ohio

Assembled in U.S.A of Domestic
And Imported Components



0 85388 64545 6

MODEL # Article 588 20 88-04 / DC 1000S

2575 Ferris Road Columbus, OH 43224
(800) 652-2321

(800)-652-2321