

2575 Ferris Road
Columbus, Ohio 43224
www.ohiosteel.com



- If there are any missing parts please call 1-800-652-2321.
- All fasteners are readily available through any hardware store.
- Any questions on assembly, operation, maintenance or safety, call the above toll free number.

TO MINIMIZE ASSEMBLY TIME:

- **DO NOT** tighten fasteners until instructed to do so.
- Items shaded **red** are the parts being assembled in that step.
- Assemble unit on cardboard box to avoid scratches or damage to parts.

Lawn & Garden

TRACTOR SUNSHADE

Model Number TSC3000

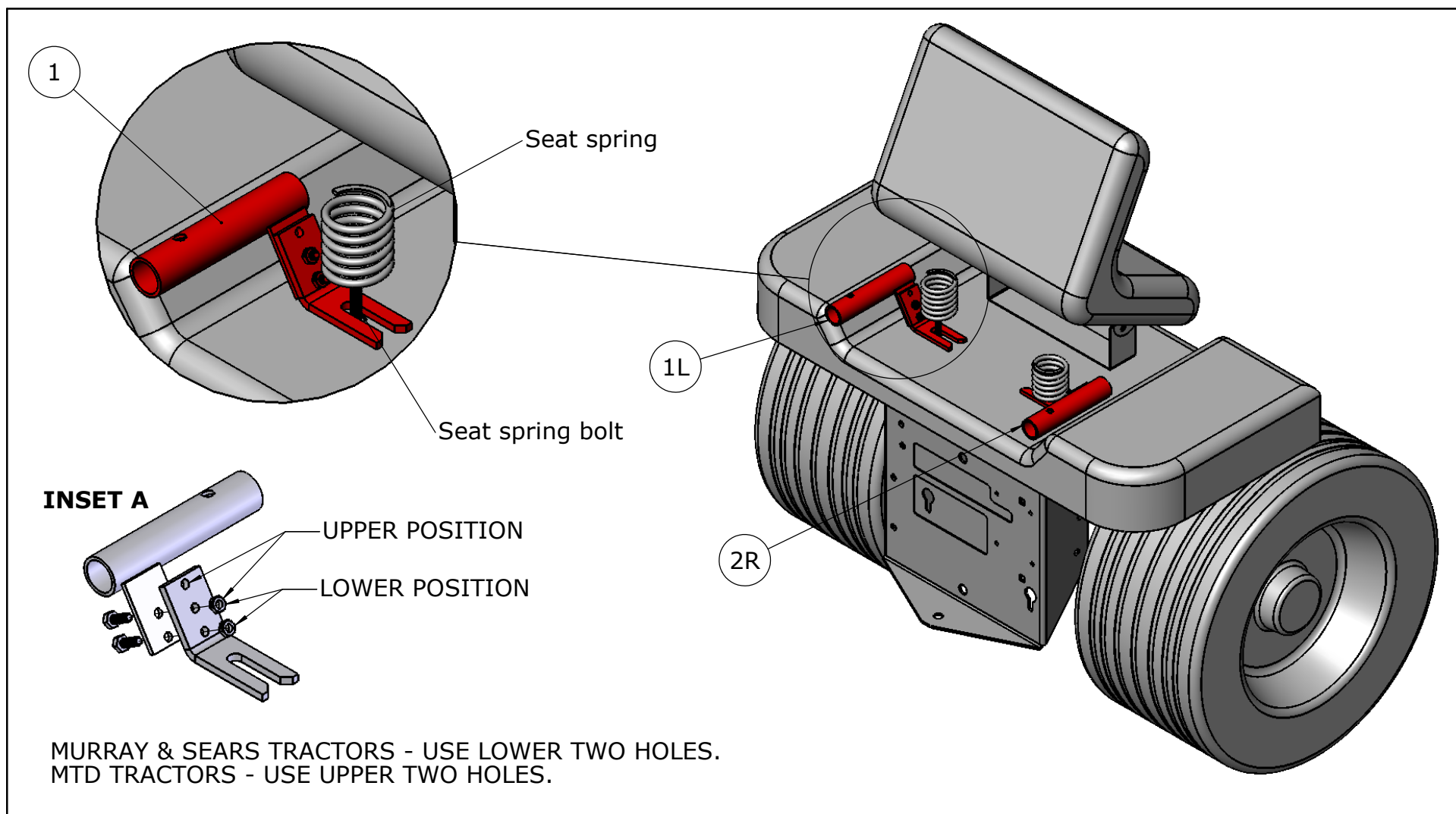


If you read and follow these instructions, this product can be assembled in 15 minutes or less. If you don't read this manual, assembly may take over two hours!!!

Shade Bracket Assembly

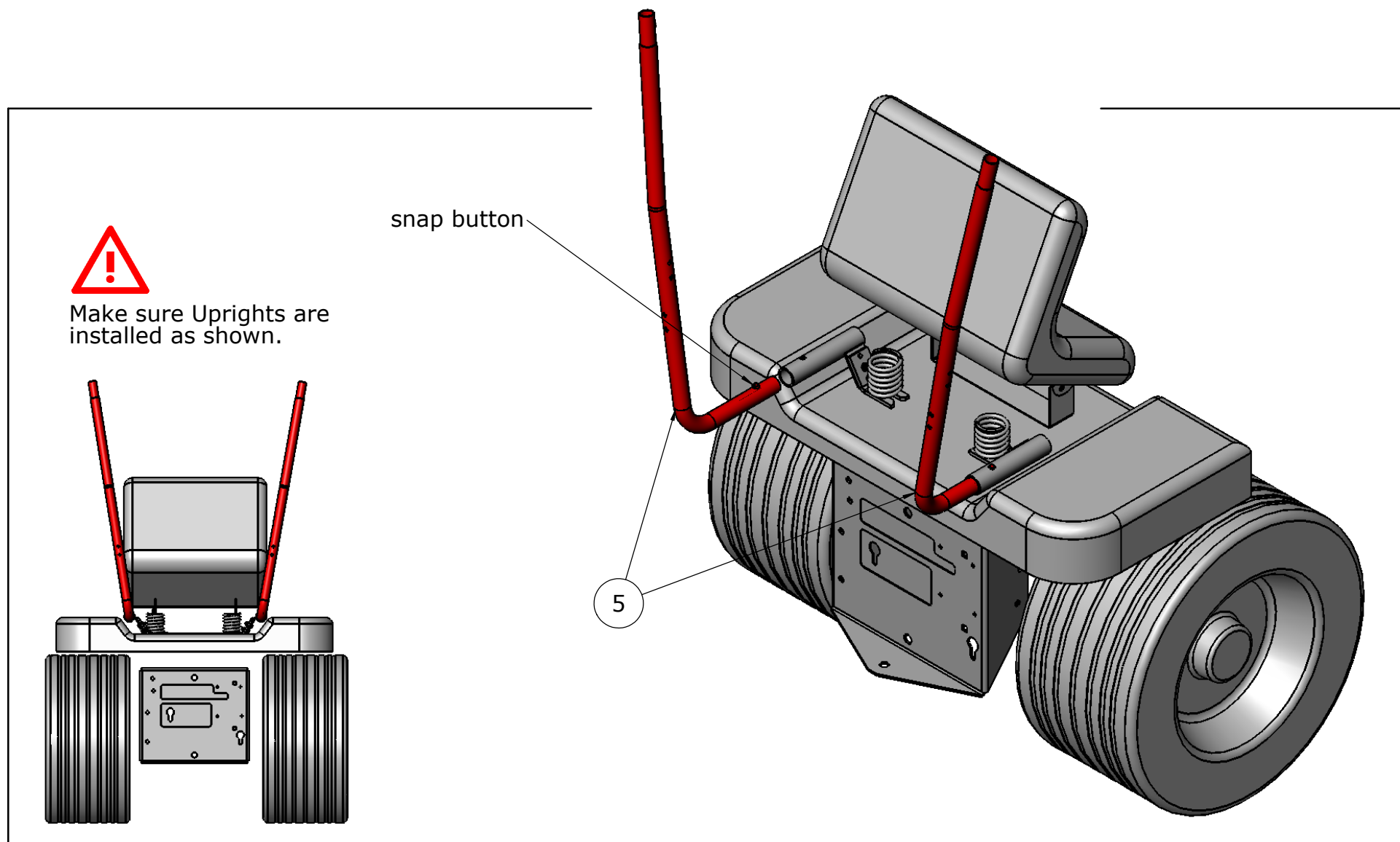
1. Pre-assemble tractor brackets according to the type of tractor you own, SEE INSET A.
Note hole in tube should face up when bolted together, brackets are rights and lefts when assembled.
2. Loosen seat spring bolts and place frame brackets (1 & 2) under spring as shown.
Leave bolts loose until shade frame base assembly is complete.

Note: Longer bolts (25 & 26) have been provided for use if needed.



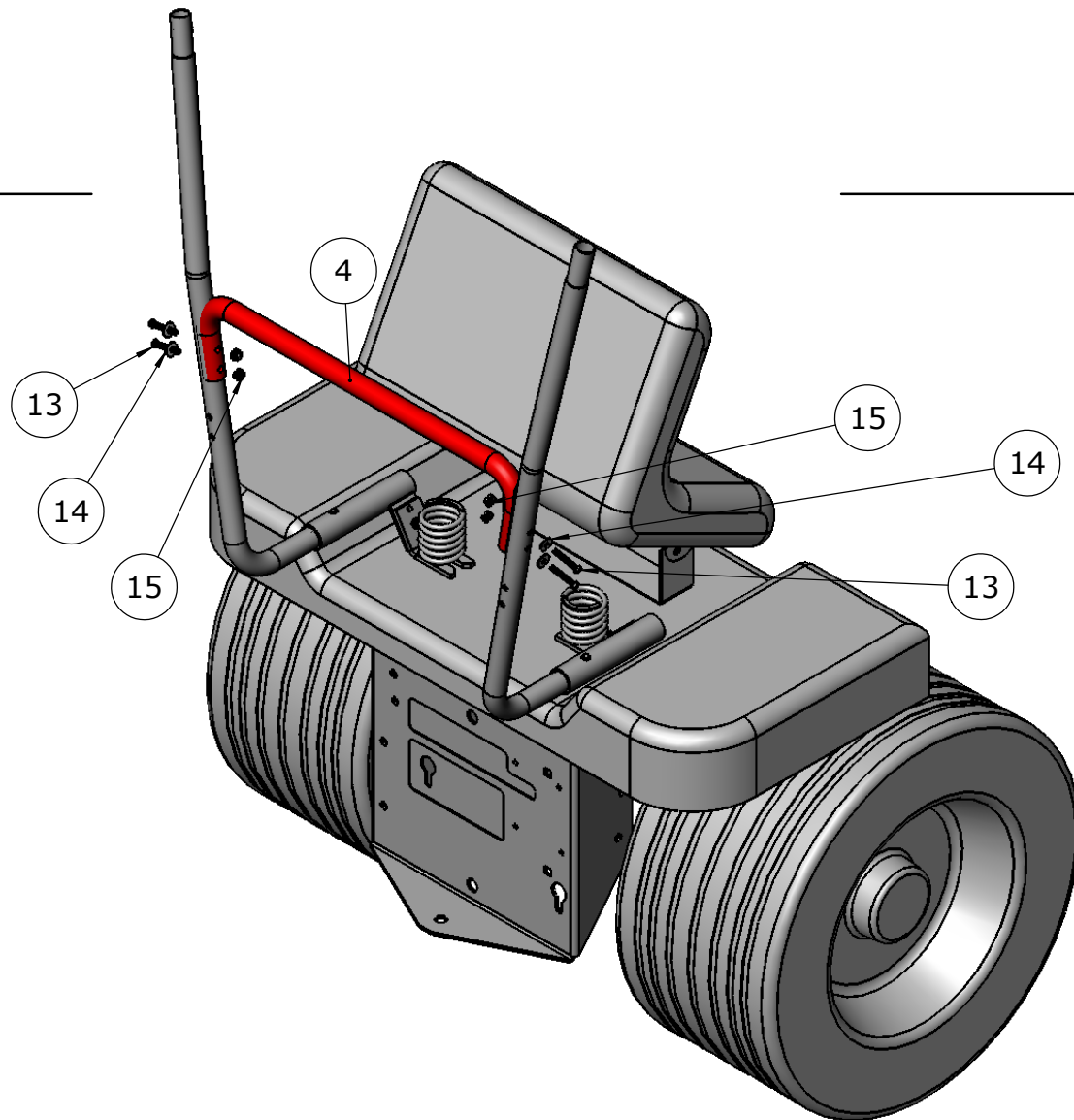
Shade Upright Assembly

3. Insert base uprights (5), as shown, by pressing snap button and inserting into bracket assembly previously installed.
4. Make sure uprights are installed as shown and snap pins are locked in place.



Rear Cross Brace Assembly

5. Add the rear cross brace (4) with four bolts (13), flat washers (14), and nuts (15) as shown.

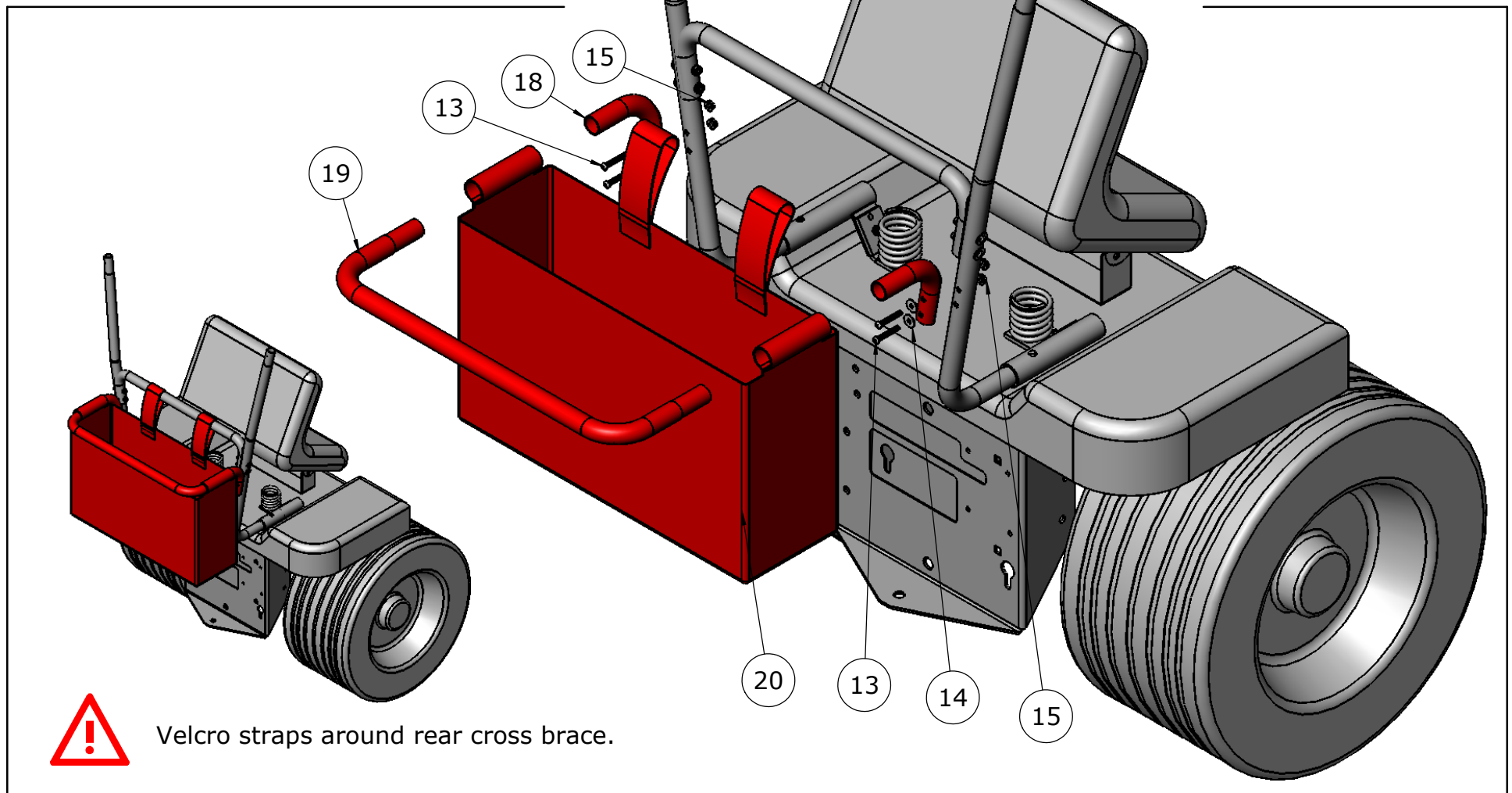


Leave bolts finger tight
at this time.

Rear Bag Assembly

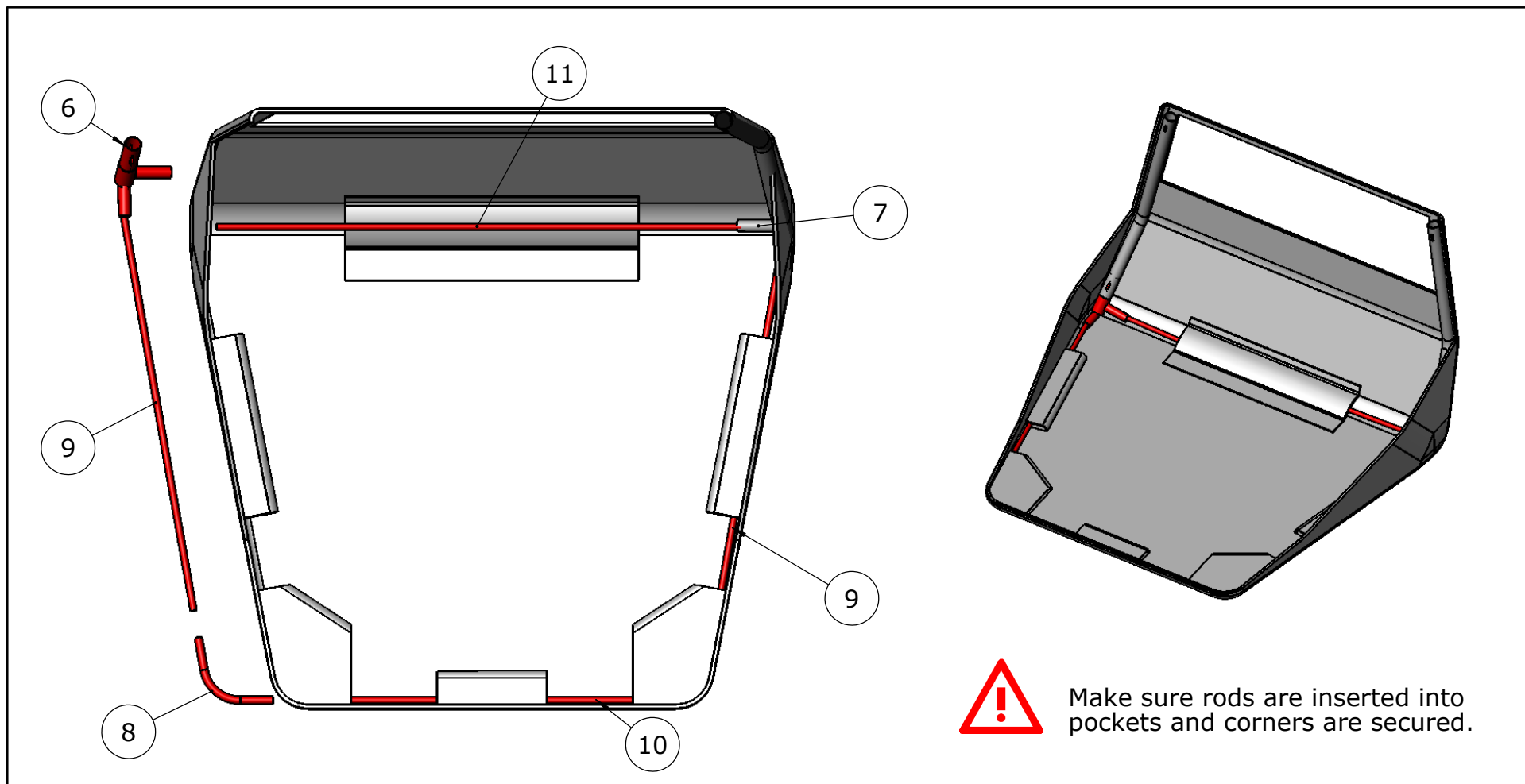
6. Loosely add the two rear bag supports (18), with
7. Insert rear bag cross tube (19) through bag
8. Wrap the two straps around the rear cross brace
9. Tighten all bolts at this time.

four bolts (13), flat washers (14), and nuts (15) as shown.
pockets and snap into rear bag supports (18).
(4) and velcro in place.



Canopy Assembly

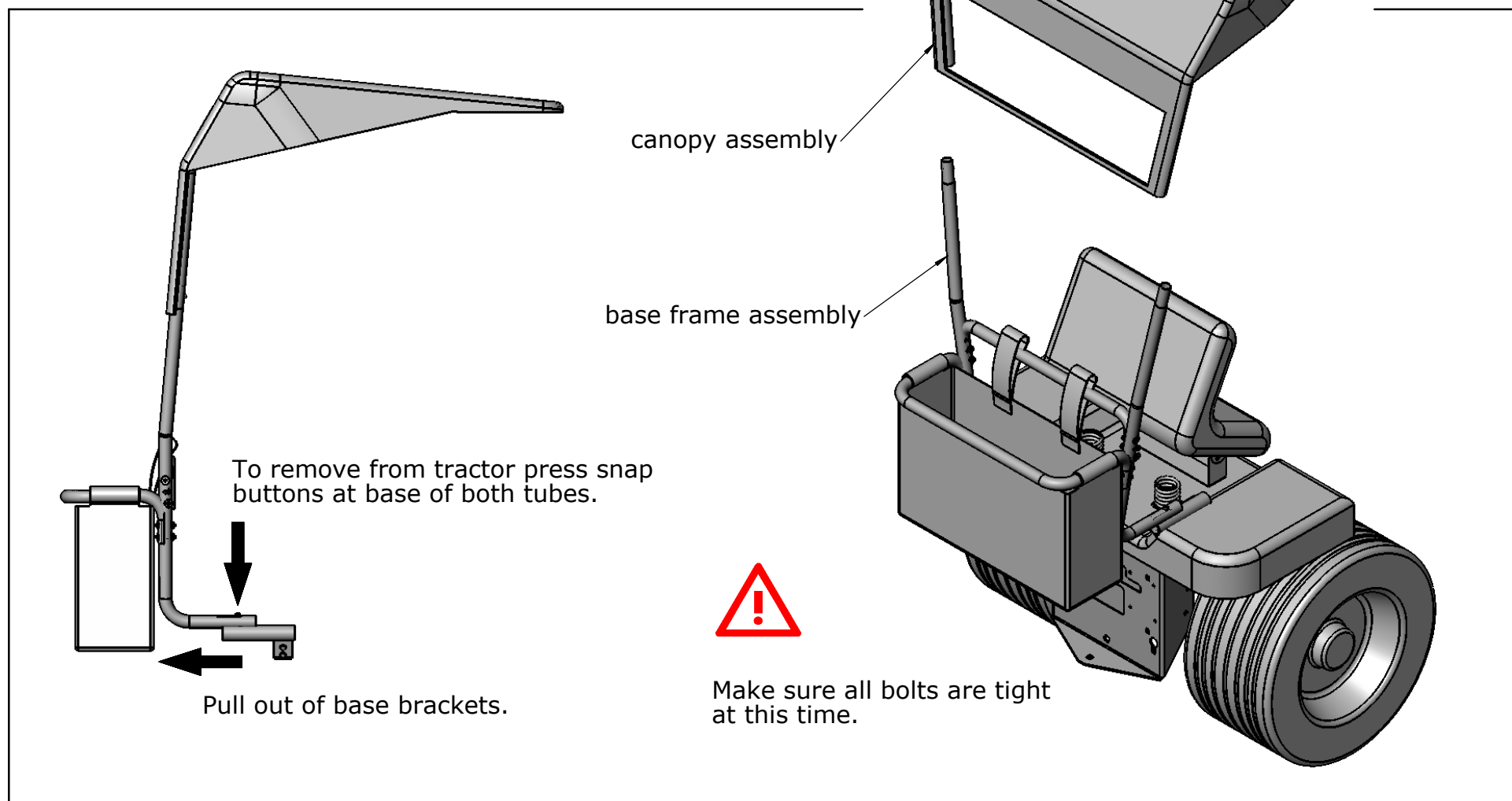
10. Insert side rods (9) into pockets provided.
11. Insert front rod (10) thru front center pocket.
12. Add front corner tubes (8) as shown.
13. Add rear canopy brackets (6 & 7) as shown, note: these brackets are left and rights.
14. Add the rear canopy rod (11) through pocket provided.
15. Add tubes (5), into rear pockets, short end up towards canopy top, making sure wire snaps into slots provided.



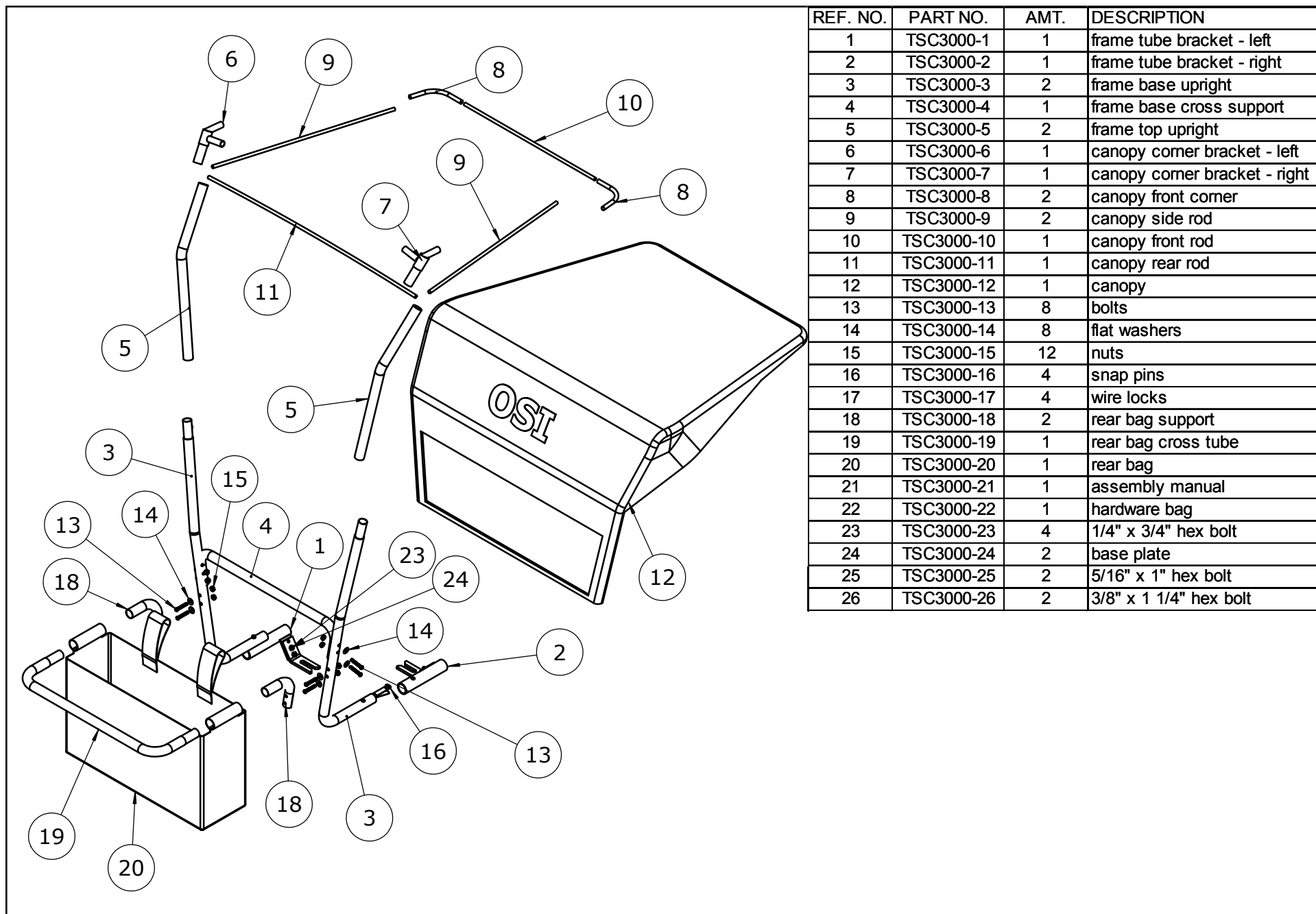
Canopy to Frame Assembly

Step 16. Slide canopy assembly onto frame assembly tubes.

Step 17. Make sure frame is squared and all bolts are tight at this time.



Sun Shade Repair Parts



FULL ONE-YEAR WARRANTY

If this product fails due to a defect in material or workmanship within one year from the date of purchase, Ohio Steel will at its option repair or replace it free of charge.

This warranty does not cover:

- Repairs necessary because of operator abuse or negligence.
- Equipment use for commercial or rental purposes.

This warranty gives you specific legal rights, and you may also have other rights, which vary from state to state. This warranty applies only while this product is in use in the United States.

Ohio Steel Industries, Columbus, OH 43224

PRODUCT RECORD

In the space below record the model number and purchase date of your item.

Model number - _____.

Purchase date - _____.

Keep this booklet and your sales receipt in a safe place for future reference.

ORDERING INFORMATION

Always mention the Model number when requesting service or repair parts.

When ordering Repair Parts, Always give the following information:

Product - Sun Shade.

Model Number - TSC3000.

Part number - *_____.

Part description - _____.

*Found on the repair parts list. Reference page 8.

NOTES: