

OHIOSTEEL®

YARDWORK SHOULDN'T BE HARDWORK®

OHIOSTEEL®



SCAN HERE
VIDEO ASSEMBLY GUIDE



12SGC1400 1400 LB STEEL GARDEN CART

Copyright 2024. All Rights Reserved.

In a continued commitment to improve quality, the manufacturer reserves the right to make component changes or design changes when necessary and without notice. The product in this box may differ slightly from that pictured. Does not affect function.

Copyright 2024. Todos los derechos reservados.

En un compromiso constante por mejorar la calidad, el fabricante se reserva el derecho a realizar cambios en los componentes o en el diseño cuando sea necesario y sin previo aviso. El producto de esta caja puede diferir levemente del de la foto. No afecta a la función.

Copyright 2024. Tous droits réservés.

Dans un souci constant d'amélioration de la qualité, le fabricant se réserve le droit d'apporter des modifications aux composants ou à la conception, si nécessaire et sans préavis. Le produit contenu dans cette boîte peut différer légèrement de celui illustré. Cela n'affecte pas le fonctionnement.

IMPORTANT SAFETY INSTRUCTIONS

1. Read, understand and follow ALL instructions before using this product.
2. Do not exceed the overall maximum load capacity of 1400 lbs. The weight rating is based on an evenly distributed load.
3. Do not allow people to use the cart without supervision and without an understanding of all safety instructions. This cart is not a toy.
4. Do not use this cart for transporting passengers.
5. This cart is not intended for highway use.
6. Do not exceed 5 mph.
7. Distribute the load evenly over the surface of the body.
8. Do not load items on the top edges of the body.
9. If any parts become damaged or missing, do not use the cart until replacement parts have been installed.
10. Do not use the cart on surfaces or for transporting objects that can cause damage to the pneumatic tires or tubes. DO NOT INFLATE THE TIRES TO MORE THAN 30 PSI (2.07 BAR).
11. It is recommended that the cart be inspected for damaged, missing, or loose parts and hardware before each use. Cease of cart use until defective parts can be repaired or replaced.
12. KEEP THESE INSTRUCTIONS FOR FURTHER REFERENCE.

WARRANTY

If this product fails due to a defect in material or workmanship within THREE YEARS from the date of purchase, we will at our option, only with receipt of purchase, repair or replace it free of charge. This warranty excludes tires, bushings, and bearings which are expendable and become worn during normal use.

This warranty does not cover:

- Repairs necessary because of operator abuse or negligence.
- Equipment used for commercial or rental purposes.
- Paint that is worn or faded due to normal use or exposure.
- Product degradation or failure due to corrosion or its effects.

To arrange for product repair visit ohiosteel.com/customer-support and fill out the warranty repair form. You can also call 1-800-652-2321, ext. 212 to speak to our Customer Service Team. This warranty gives you specific legal rights, and you may also have other rights which may vary from state to state. This warranty applies only while this product is in use in the United States.



7 16504 19205 8

MODEL # 12SG1400

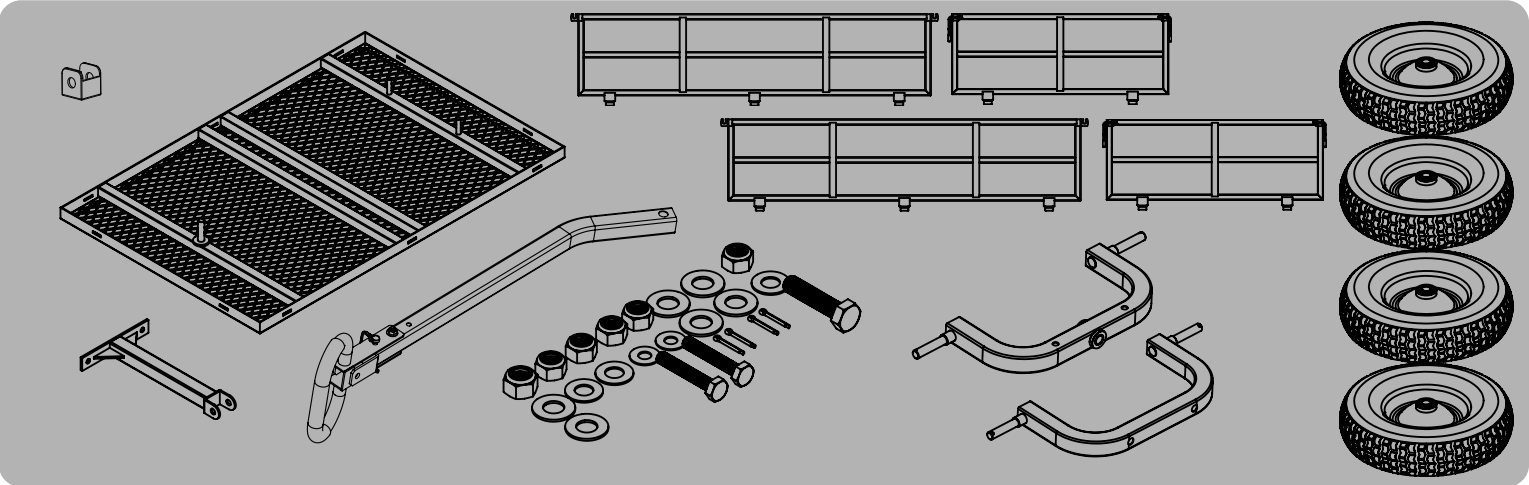


WARNING: Cancer and Reproductive Harm - www.P65Warnings.ca.gov
ADVERTENCIA: Cáncer y daño reproductivo - www.P65Warnings.ca.gov
AVERTISSEMENT: Cancer et dommages à la reproduction - www.P65Warnings.ca.gov

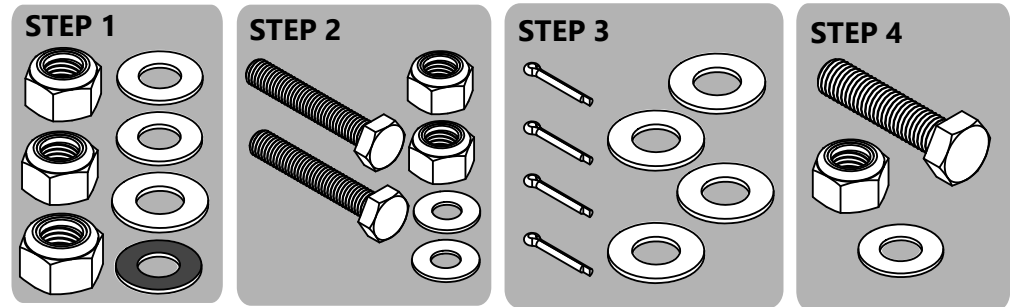
MADE IN CHINA

6006092 - REV B - 02/25

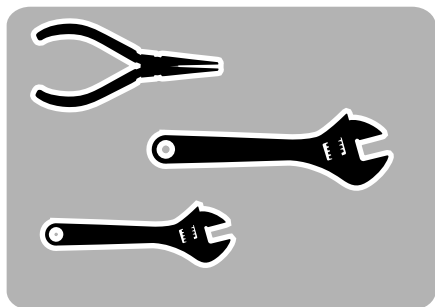
CARTON CONTENTS



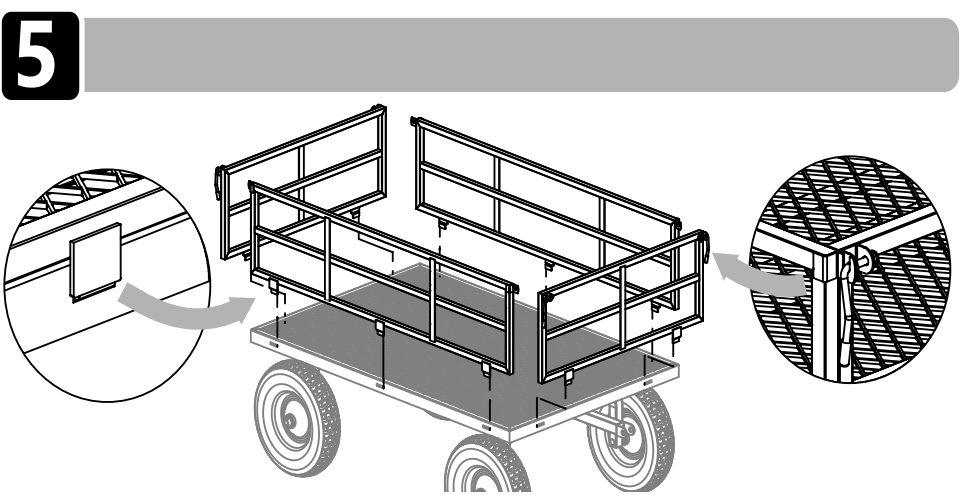
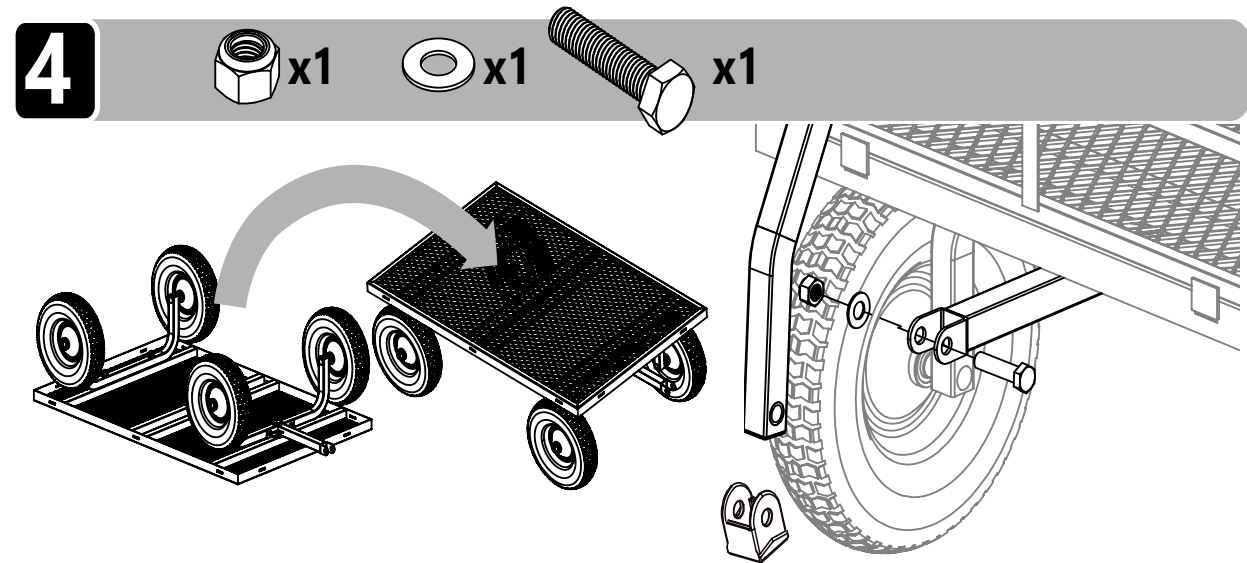
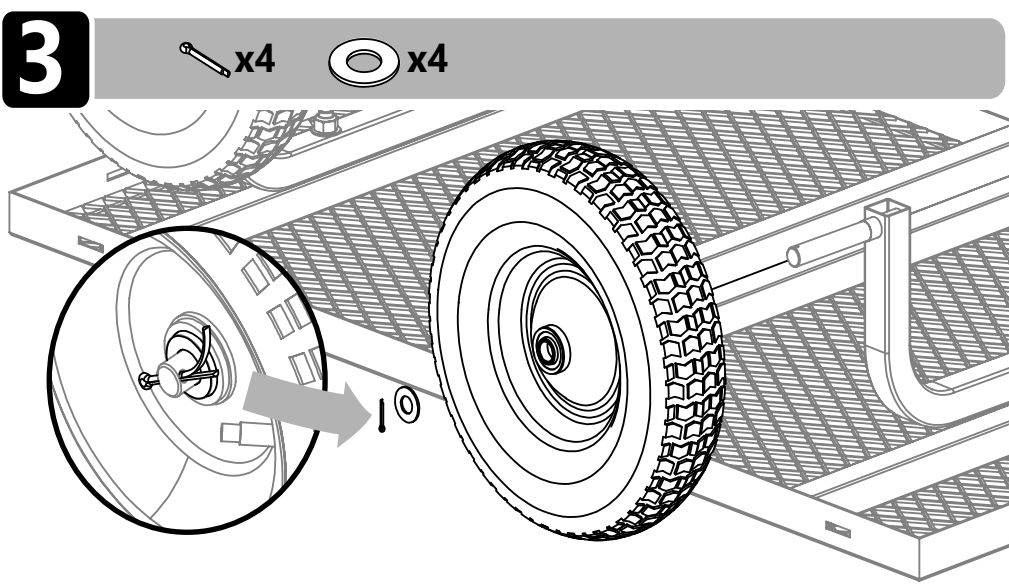
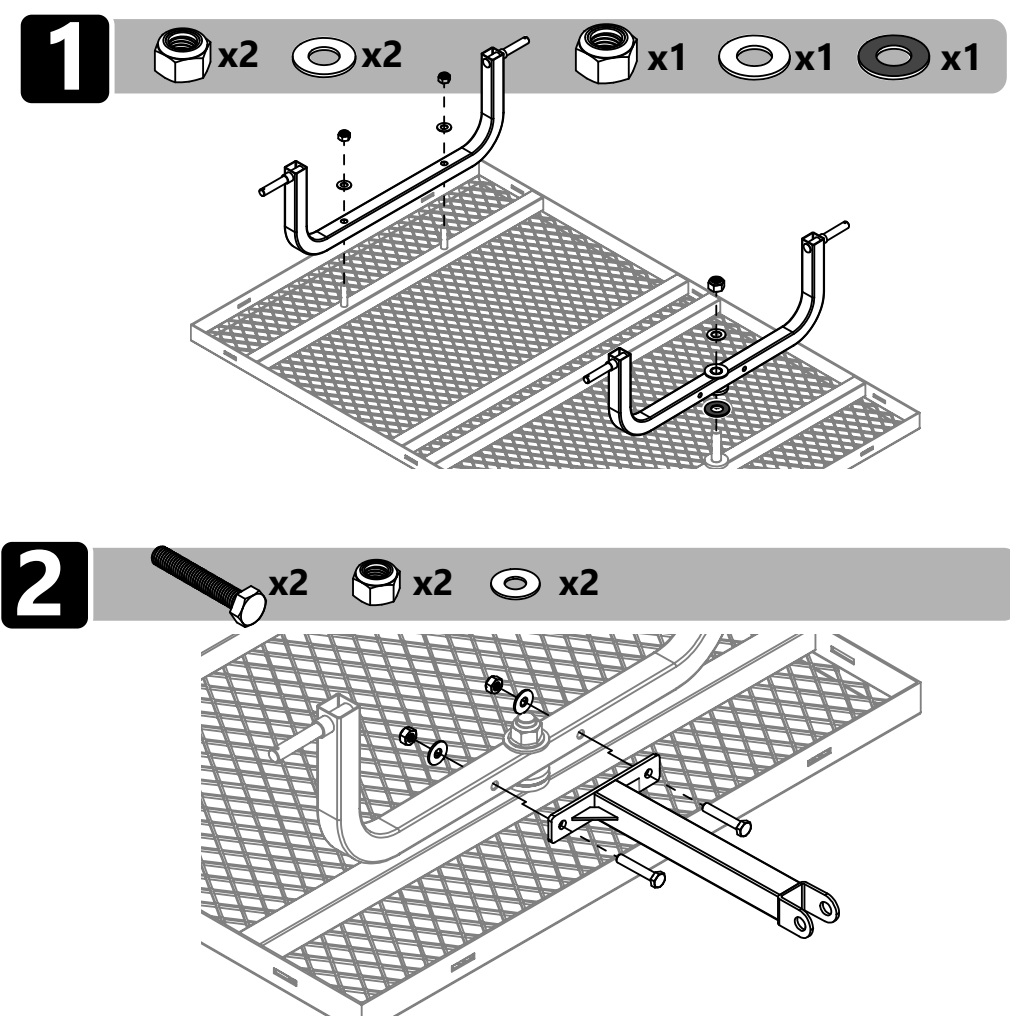
HARDWARE



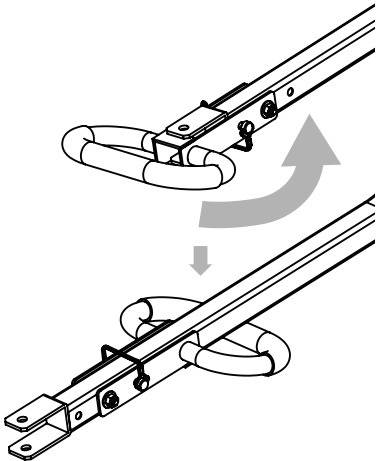
TOOLS REQUIRED



ASSEMBLY INSTRUCTIONS



CONVERT TO TOW HITCH



OPERATING INSTRUCTIONS

How to Use Garden Cart:

- 1. Pull on cart handle.
- 2. Do not exceed 1400 pounds when loading material into cart.
- 3. Distribute the weight of the load as evenly as possible in the cart body for best handling.
- 4. When hauling heavy loads, verify that operator has adequate towing and stoping capabilities.

How to lower gates:

- Reference assembly Step 5 and perform in reverse.