

42TD

42" TINE DETHATCHER



**READ AND FOLLOW ALL SAFETY RULES AND OPERATING
INSTRUCTIONS BEFORE USING THIS EQUIPMENT**

Safety Rules



This is the safety alert symbol. It is used to alert you to potential personal injury hazards. Obey all safety messages that follow this symbol to avoid possible injury or death.

Read and understand all safety rules and operating instructions before using this tractor attachment.

Follow all safety rules and operating instructions provided by your tractor's manufacturer when using attachment.

Never allow children or untrained persons to operate tractor or attachment.

Reduce tractor speed to slowest setting when towing or operating on slopes.

Operate up and down slopes, never across the face of slopes.

Do not carry passengers on tractor or attachment.

Avoid sudden turns or maneuvers.

Do not tow attachment on public roadways.

Do not remove warning decals from product.

Check product for worn, loose, or damaged parts before each use. If any damage is present, repair the product before using.

Check product for loose or missing fasteners before each use. Tighten or replace fasteners as needed before using.

Do not exceed tractor speed of 3 miles per hour when operating or towing Tine Dethatcher.

Tine Dethatcher has sharp points; always ***HANDLE WITH CARE.***

Always wear proper footwear and hand protection when operating or handling the Tine Dethatcher.

Warranty

IF YOU ARE MISSING PARTS DO NOT RETURN TO STORE

Email cs@ohiosteel.com or call 1-800-652-2321, ext. 212

Attach Receipt Here:

Before you call, please email our customer service team at cs@ohiosteel.com with the following:

1. A description of the issue you are having
2. Photos of the issue that include an overall view and detailed view from multiple angles
3. If applicable, a short video showing the issue

Replacement Parts:

You can place your parts order online at ohiosteel.com/partsstore

- You can also reach our Customer Service Department at 1-800-652-2321, ext. 212
- If you are ordering replacement part(s) for your product, please note that some parts are only available as a repair kit.

If this product fails due to a defect in material or workmanship within THREE YEARS from the date of purchase, we will at our option, only with receipt of purchase, repair or replace it free of charge. This warranty excludes spring tines, wheels, and spacers which are expendable and become worn during normal use.

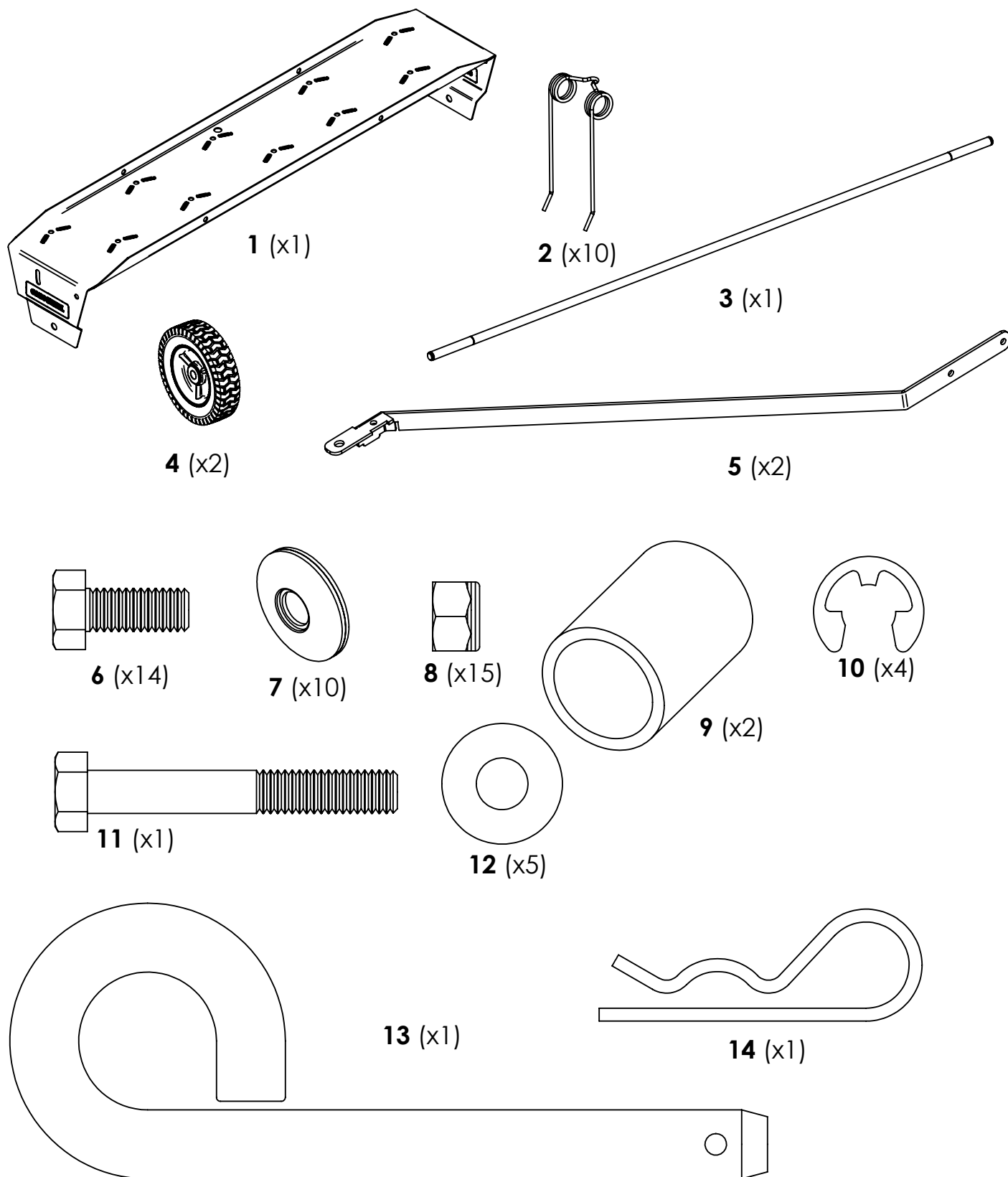
This warranty does not cover:

- Repairs necessary because of operator abuse or negligence.
- Equipment used for commercial or rental purposes.
- Paint that is worn or faded due to normal use or exposure.
- Product degradation or failure due to corrosion or its affects.

To arrange for product repair visit ohiosteel.com/customer-support and fill out the warranty repair form. You can also call 1-800-652-2321, ext. 212 to speak to our Customer Service Team

This warranty gives you specific legal rights, and you may also have other rights which may vary from state to state. This warranty applies only while this product is in use in the United States.

Carton Contents

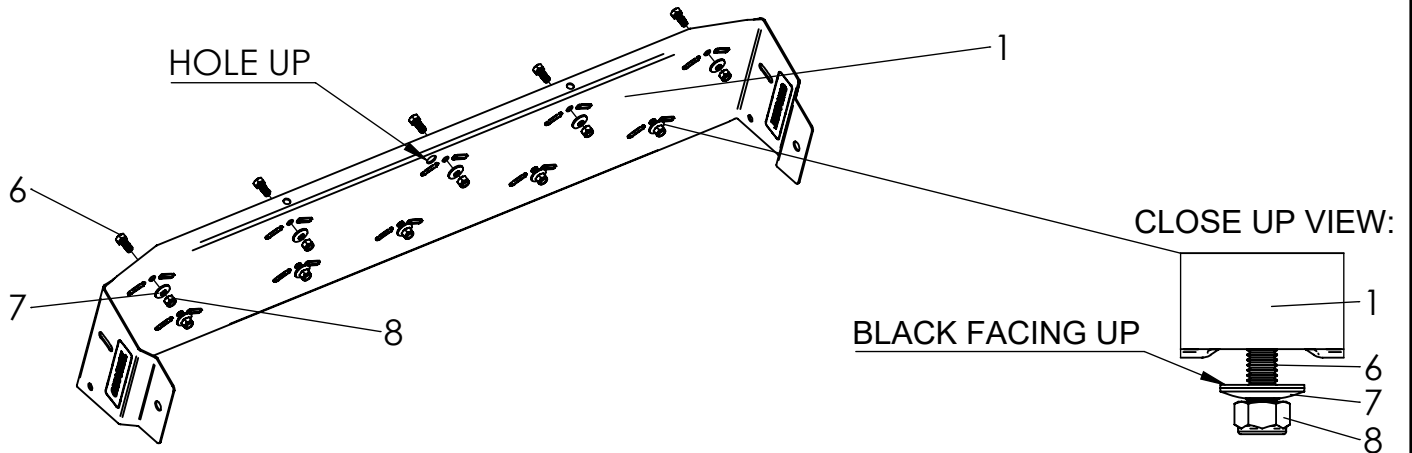


TOOLS REQUIRED FOR ASSEMBLY:

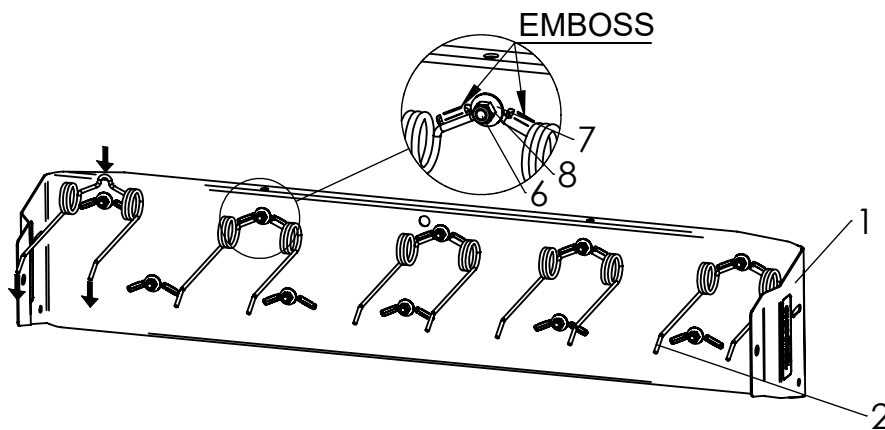
- 1/2" Wrench and Socket

Assembly Instructions

- 1** Lay Body (1) on side with center hole noted below oriented up. Insert 3/4" Hex Bolts (6) through body from top of tray. Place Washer (7) over Hex Bolt (6) with black rubber facing towards Body (1). Thread Hex Nut (8) onto Hex Bolt (6) but do not tighten.

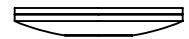


- 2** Slide Spring Tines (2) over exposed threads of Hex Bolts (6) in top row. Tips of tines should face down as shown (see arrows). Each Spring Tine (2) should be positioned in front of both embosses in Body (1). Tighten hardware (6 & 8) until Washer (7) deflects to become flat.

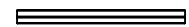


ASSEMBLY NOTE

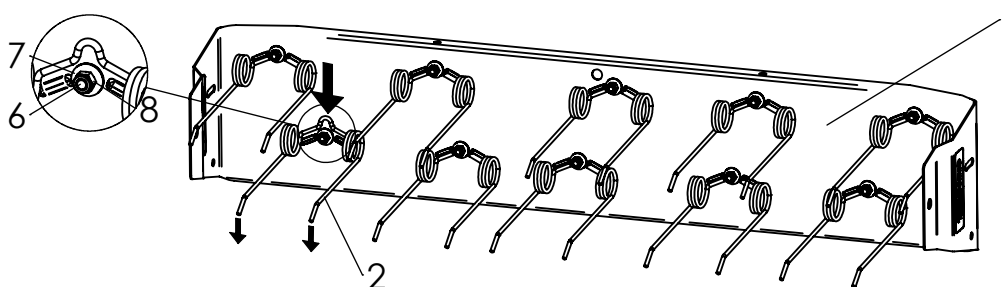
WASHER (CURVED)
BEFORE INSTALL:



WASHER (FLATTENED)
AFTER INSTALL:



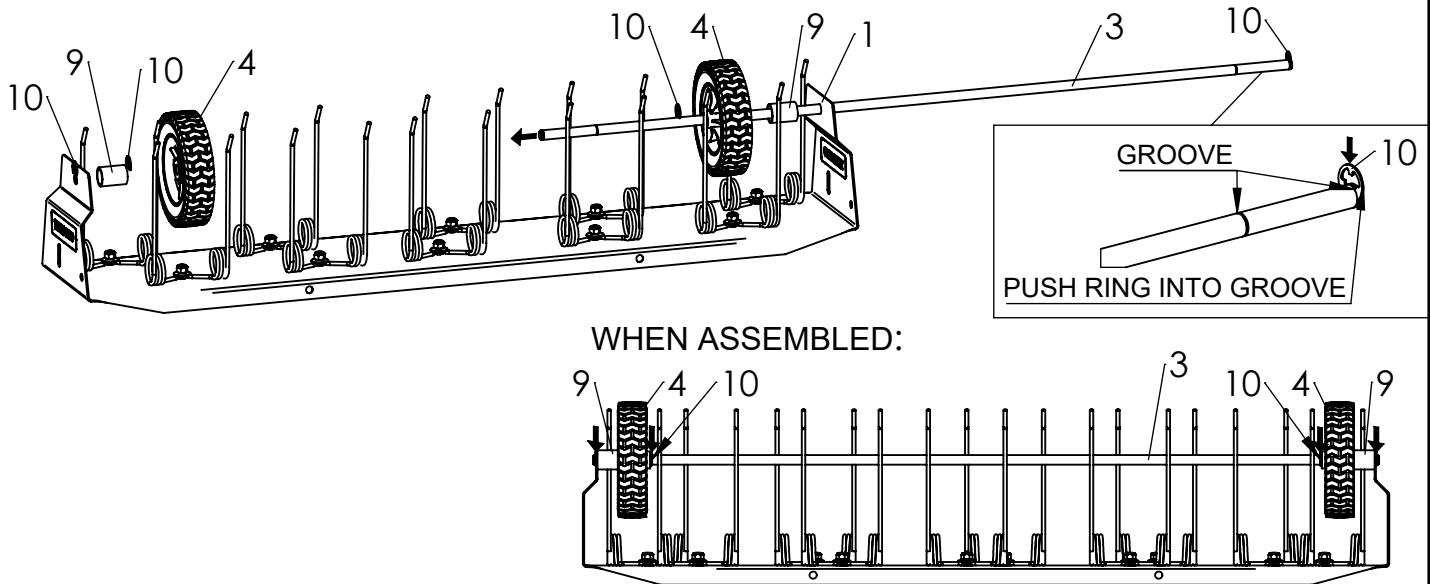
- 3** Slide remaining Spring Tines (2) over threads of Hex Bolts (6). Tips of tines should face direction of tines in previous step (see arrows). Tighten Hardware (6 & 8) until Washer (7) deflects to becomes flat.



Assembly Instructions

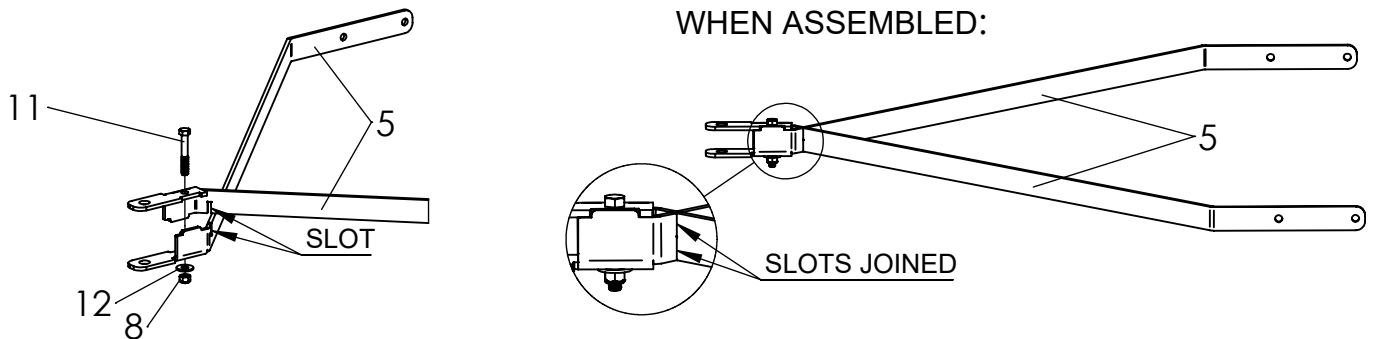
4

Insert Axle (3) through axle hole in Body (1), Spacer (9), both Wheels (4), second Spacer (9), and terminate through second hole in Body (1). Secure both ends of Axle (3) with Retaining Ring (10). Push Wheels (4) and Spacers (9) to opposite ends against Body (1) and secure with remaining Retaining Rings (10).



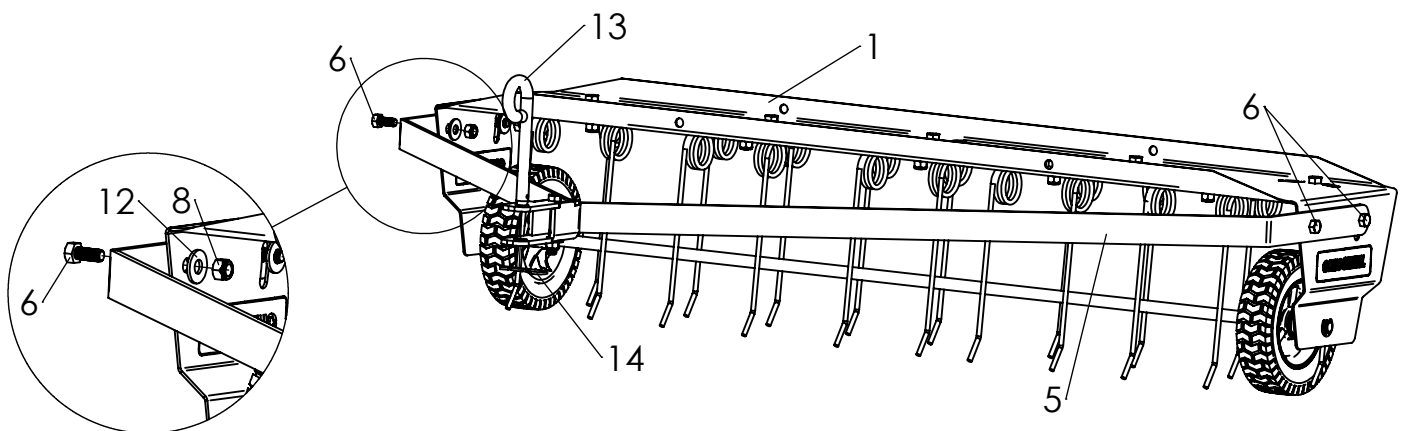
5

Line up holes and slots in both Drawbars (5) and join. Insert 2-1/4" Hex Bolt (11) through holes shown below in both Drawbars (5). Secure with Washer (12) and Hex Nut (8).



6

Install assembled drawbar onto Body (1) with 3/4" Hex Bolts facing in. Secure with flat Washer (12) and Hex Nut (8). Drawbar position will be fine tuned using procedure in Operations Instructions on next page. Install Hitch Pin (13) and secure to vehicle with supplied Cotter Pin (14).



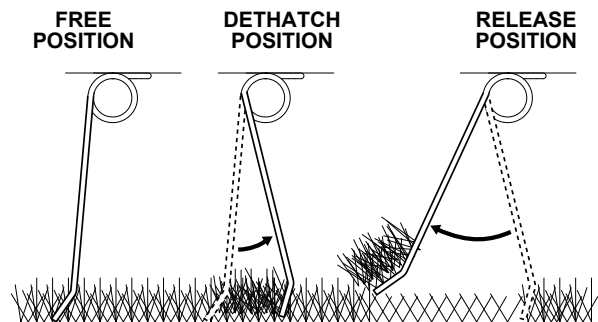
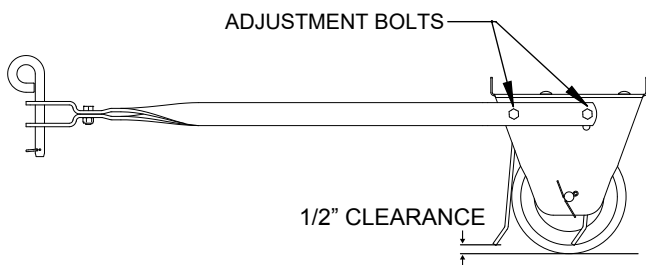
Operating Instructions

Before Using Tine Dethatcher:

1. Read all Safety Rules found on page 1.

How to Set Up Lawn Dethatcher:

1. On a hard level surface, attach Tine Dethatcher to tractor using supplied hitch pin.
2. Loosen all four adjustment bolts on the drawbar and rotate tray so it is level to the ground, retighten all hardware before resuming work.
3. Tines should all be roughly 1/2" above surface for optimum dethatching.



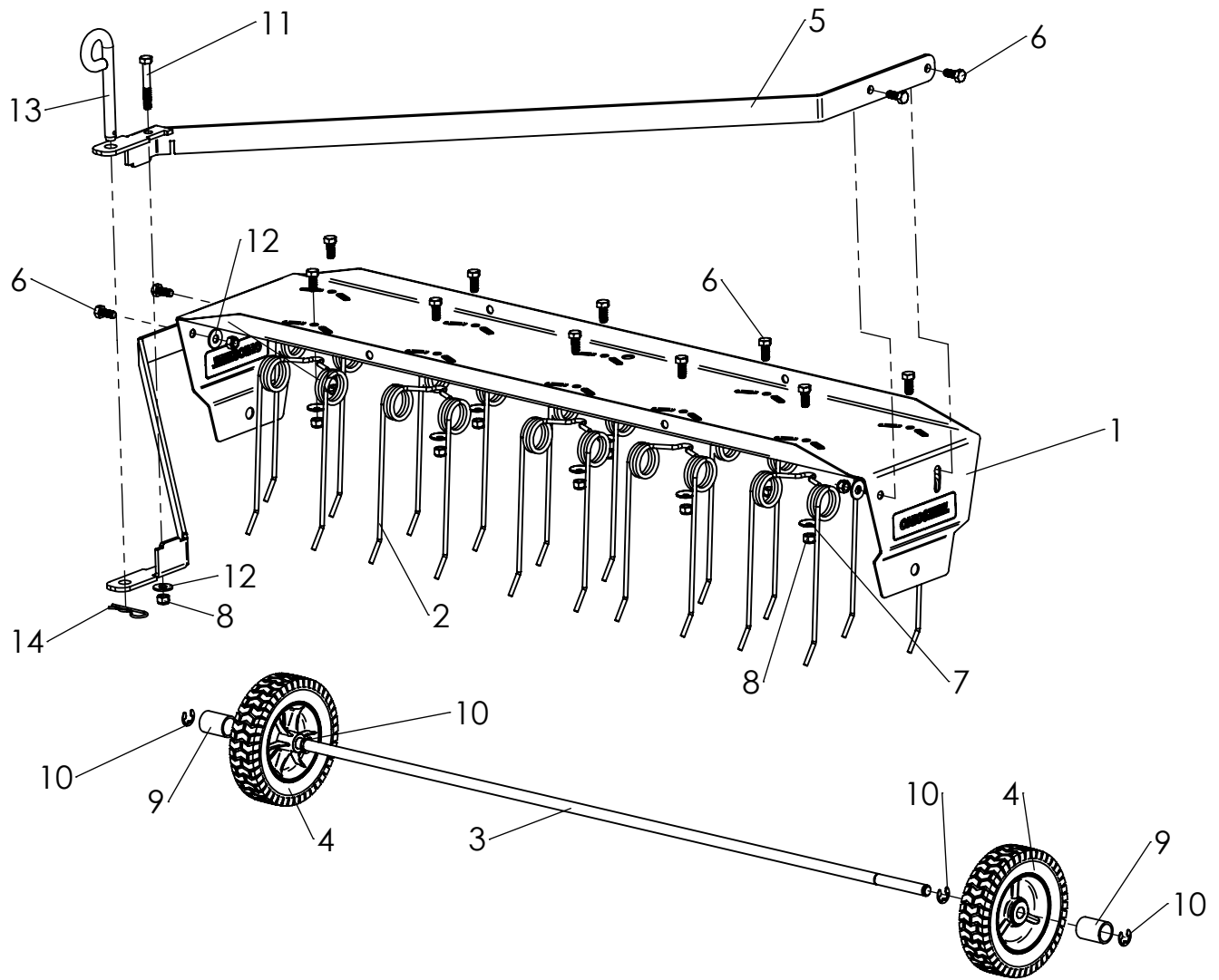
How to Dethatch Lawn:

1. Mow lawn and remove loose clippings. Grass should be less than 3" tall.
2. Do not dethatch lawn if ground is too wet or muddy.
3. Attach Tine Dethatcher to tractor using supplied hitch pin.
4. Engage tractor drive at its slowest speed and begin dethatching. Increase tractor speed as desired.
5. Dethatch in straight lines whenever possible and avoid sharp turns.
6. Up to two standard concrete blocks (80 lbs), or other weights, can be added to the tray to prevent bouncing. Always secure weights to top plate using bungee straps (not included).

Periodic Maintenance:

- Tighten fasteners as needed before each use.
- Keep Tine Dethatcher clean and dry to prevent rust.
- Inspect for any damaged or loose hardware, replace as needed.

Repair Parts



ITEM NO.	PART NUMBER	DESCRIPTION	QTY.
1	6005875-B2	BODY, 42TD (BLACK)	1
2	6000630-B1	TINE, DETHATCHER (BLACK)	10
3	6005876	AXLE, 1/2" X 40.938."	1
4	6000658	WHEEL, 6 X 1.5	2
5	6005920-B2	DRAWBAR, 42TD (BLACK)	2
6	KIT 6005885	HEX BOLT, 5/16-18 X 3/4" (ZINC)	14
7		WASHER, 5/16" SEALING (ZINC)	10
8		HEX NUT, 5/16-18 NYLOC (ZINC)	15
9		SPACER, 3/4" X 1.375"	2
10		RETAINING RING, 1/2" EXT (ZINC)	4
11	KIT 6005885	HEX BOLT, 5/16-18 X 2-1/4" (ZINC)	1
12		WASHER, 5/16" USS (ZINC)	5
13		PIN, HITCH, 1/2" X 3" (ZINC)	1
14	KIT 6000770	COTTER HAIRPIN, 3/32" X 2-5/16" (ZINC)	1

Notes

OHIOSTEEL®



MODEL # 42TD



Proudly designed and
tested in Columbus, Ohio

Manufactured in the U.S.A from
domestic and imported components

