

OHIOSTEEL[®]



SCAN HERE
VIDEO ASSEMBLY GUIDE



7PTS80

FERTILIZER AND SALT SPREADER



**READ AND FOLLOW ALL SAFETY RULES AND OPERATING
INSTRUCTIONS BEFORE USING THIS EQUIPMENT**

Safety Rules



This is the safety alert symbol. It is used to alert you to potential personal injury hazards. Obey all safety messages that follow this symbol to avoid possible injury or death.

Read and understand all safety rules and operating instructions before using this product.

Never allow children or untrained persons to operate product.

Operate up and down slopes, never across the face of slopes.

Do not carry passengers on product.

Avoid sudden turns or maneuvers.

Use caution when backing up to prevent personal injury or product damage.

Do not use product on public roadways.

Do not remove warning decals from product.

Check product for worn, loose, or damaged parts before each use. If any damage is present, repair the product before using.

Check product for loose or missing fasteners before each use. Tighten or replace fasteners as needed before using.

Always completely stop product before performing any maintenance.

Wear appropriate protective equipment while using product, including but not limited to closed toe shoes, safety glasses, and gloves.

Watch for traffic when using product near the roadway.

Do not reach into any areas in product with moving or rotating surfaces.

Operate with a reduced speed in rough terrain and hills to prevent tipping or loss of control.

Do not exceed tractor speed of 4 MPH when towing or operating spreader.

Warranty

IF YOU ARE MISSING PARTS DO NOT RETURN TO STORE

Email cs@ohiosteel.com or call 1-800-652-2321, ext. 212

Attach Receipt Here:

Before you call, please email our customer service team at cs@ohiosteel.com with the following:

1. A description of the issue you are experiencing.
2. Photos of the issue that include an overall view and detailed view from multiple angles.
3. If applicable, a short video showing the issue.

Replacement Parts:

You can place your parts order online at ohiosteel.com/partsstore

- You can also reach our Customer Service Department at 1-800-652-2321, ext. 212
- If you are ordering replacement part(s) for your product, please note that some parts are only available as a repair kit.

If this product fails due to a defect in material or workmanship within THREE YEARS from the date of purchase, we will at our option, only with receipt of purchase, repair or replace it free of charge. This warranty excludes tires, wheels, brushes and bag, which are expendable and become worn during normal use.

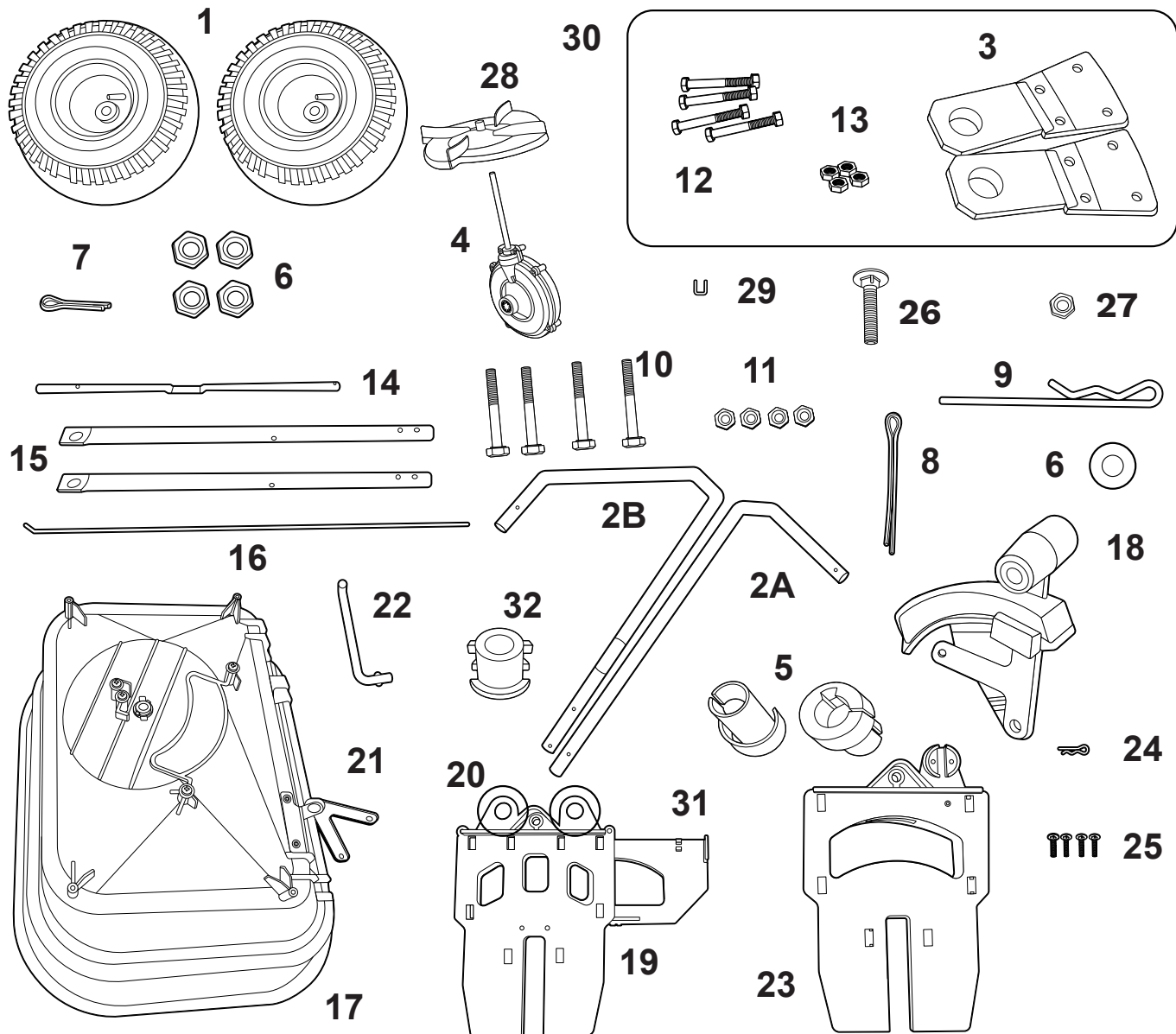
This warranty does not cover:

- Repairs necessary because of operator abuse or negligence.
- Equipment used for commercial or rental purposes.
- Paint that is worn or faded due to normal use or exposure.
- Product degradation or failure due to corrosion or its effects.

To arrange for product repair visit ohiosteel.com/customer-support and fill out the warranty repair form. You can also call 1-800-652-2321, ext. 212 to speak to our Customer Service Team.

This warranty gives you specific legal rights, and you may also have other rights which may vary from state to state. This warranty applies only while this product is in use in the United States.

Carton Contents



Summer Material Plate

Winter Material Plate

PARTS LIST:

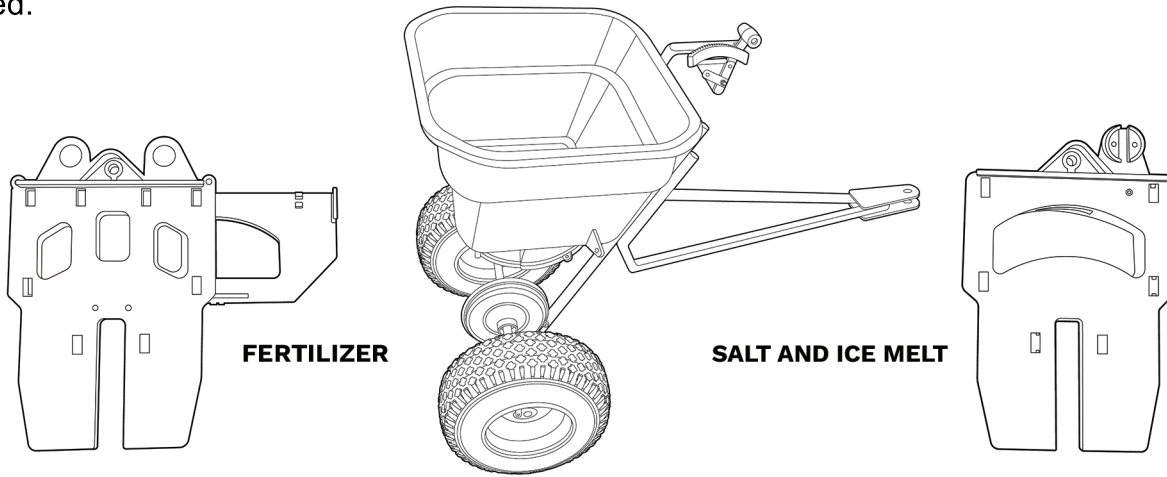
1.	Pneumatic Wheel (X2)	12.	45mm Tow Hitch Bolts (X4)	24.	R-Pin Small for part 22
2A.	Right Tow Arm	13.	Lock Nuts for part 12A (X5)	25.	17 mm Screws (hopper to slider) (X4)
2B.	Left Tow Arm	14.	Axle	26.	M6X40 Carriage Bolt
3.	Tow Hitch Plate	15.	Frame Legs (X2)	27.	Impellor
4.	Gear Box	16.	Control Rod Tow	28.	U Pin for Impellor
5.	Axle Bearing (X2)	17.	Hopper Body	29.	Tow Assembly Hardware Bag
6.	Wheel Washer (X1)	18.	Control Lever Tow	30.	Border Control Plate for part 19
7.	Small Cotter Pin	19.	Summer Slider Assembly	31.	Hopper Bushing
8.	Large Cotter Pin	20.	Adjusters Left and Right		
9.	Agitator	21.	Pivot Bracket		
10.	M6X60 Bolts (X4)	22.	Pivot Rod		
11.	M6 Nuts (X4)	23.	Winter Slider Assembly		

TOOLS REQUIRED FOR ASSEMBLY:

- Phillips Head Screwdriver (small)
- Pliers
- M6 Wrench

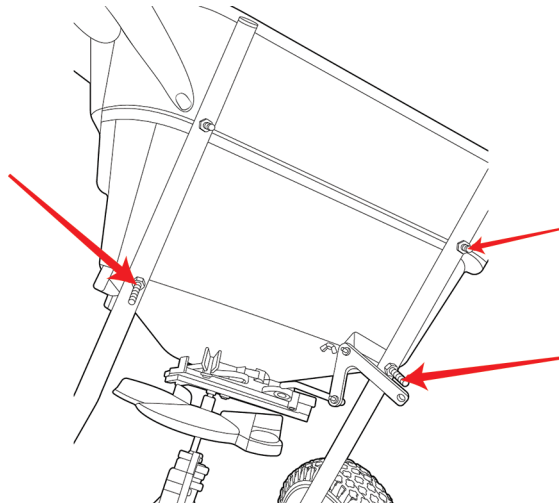
Assembly Instructions

Before use, consider what you would like to use your spreader for. When using the spreader to apply fertilizer, use the material slider with the three holes pictures above. Note: This spreader is pre-assemble with the summer material slider (19). If you're spreading salt, use the winter slider pictured.



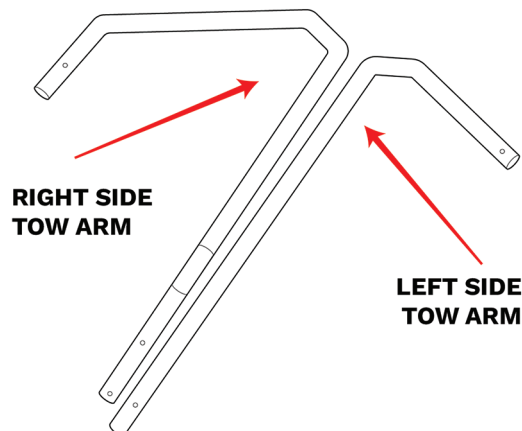
1

Undo all four nuts (11) as shown leaving the bolts in place.



2

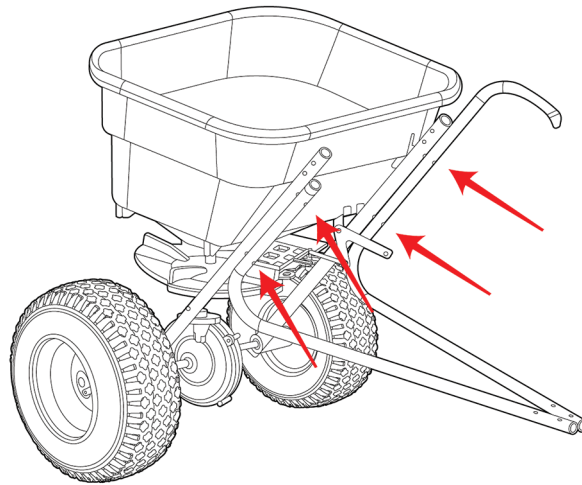
Place the two left and right tow arms (2A & 2B) on to the protruding four M6 x 60 bolts (shown in step 1). Ensure the longer right side tow arm is attached on the right side as shown in Step #3.



Assembly Instructions

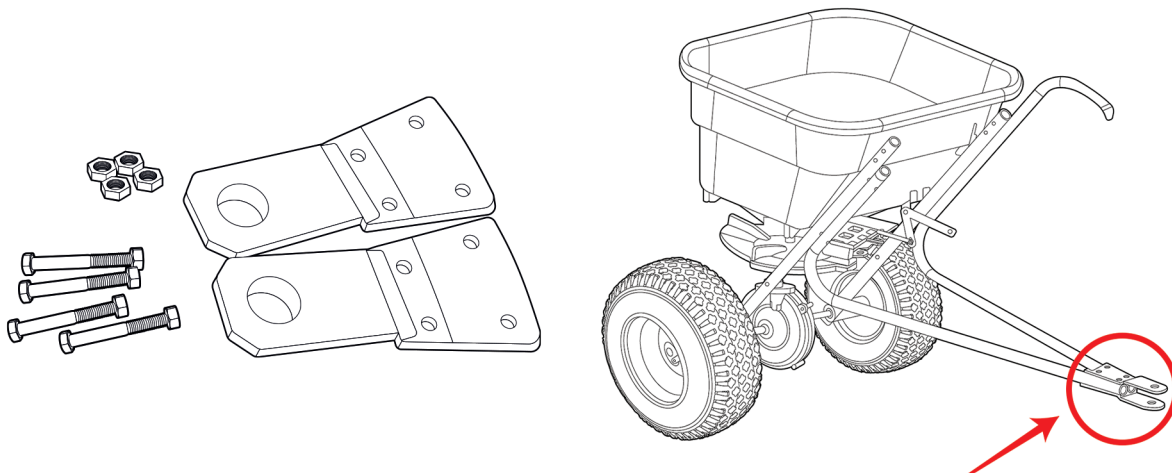
3

With the two tow arms located in position as shown, using the four M6 nuts (11) secure the tow arms in place. DO NOT FULLY TIGHTEN THE NUTS.



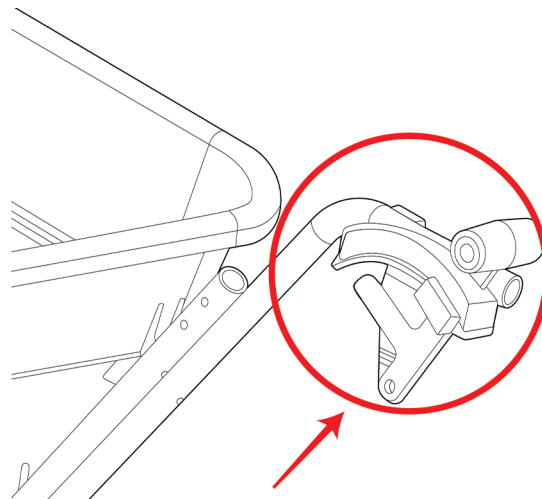
4

The tow hitch plate (3A) attaches to the free ends of the tow two arms. Use the lock nuts and 45mm bolts provided to assemble the hitch plate onto the tow arms using four x M6 x 45mm bolts and lock nuts, and fully tighten the lock nuts.



5

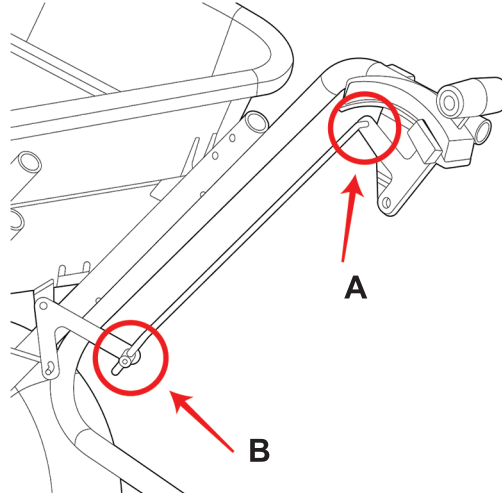
Place the control lever into (18A) position on the inside of right side tow arm. Using the M6x40 bolt and lock nut (27 & 28) secure in the shown position. Fully tighten the lock nut.



Assembly Instructions

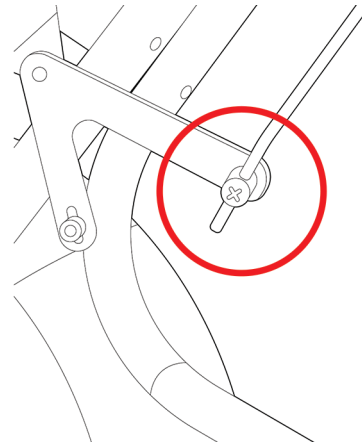
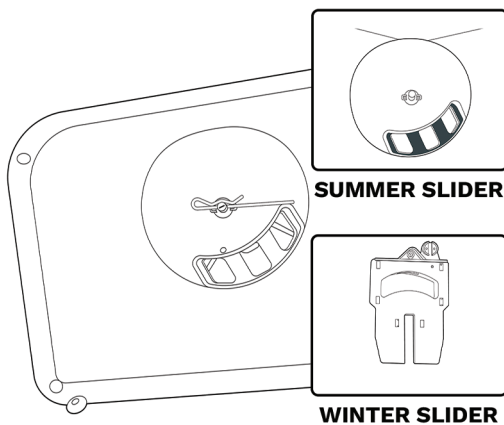
6

Attach the control rod (16A) to the control lever and secondly the pivot bracket. First, locate the hook end of the rod through the hole on the control lever A. Next, feed the control rod through the receiving hole (B).



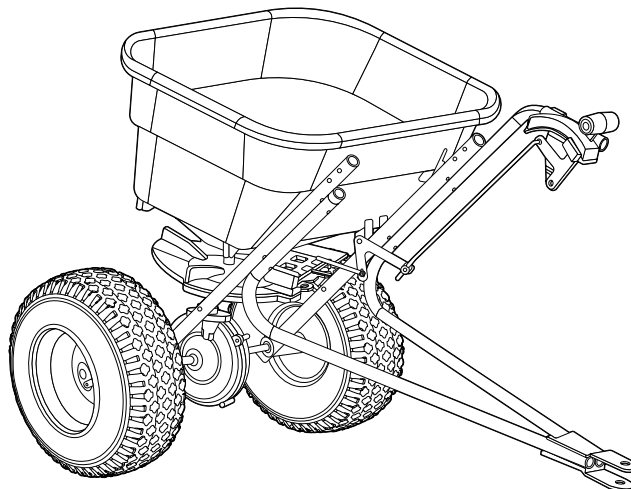
7

Before tightening the control rod, make sure the application holes in the hopper are fully open and that the control level is set to 20. With the application holes fully open (as shown in step 7) and the control lever set at 20 tighten the screw at the pivot bracket end (as circled above) to secure the control rod to the pivot bracket.



8

Assembly is now complete. **IMPORTANT:** The maximum tow speed is 4mph. (6 Kph) NEVER EXCEED the 4 mph speed as damage to the gear box will occur.



Operating Instructions

Tow Patterns for the optimum application (For Fertilizer Only)

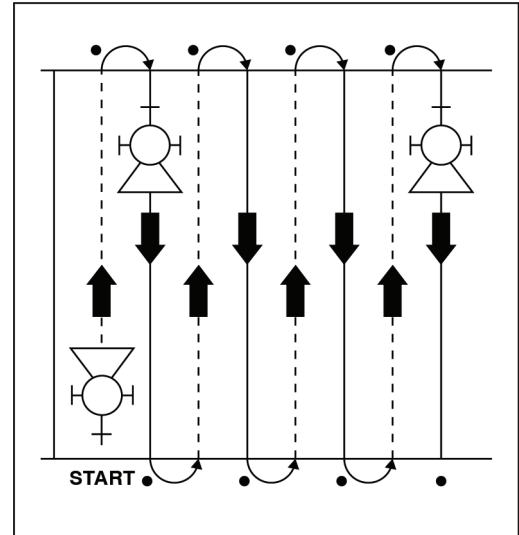
There are two methods of effective spreading, longitudinal fertilizer spreading and cross sectional fertilizer spreading.

A

Single Pass Fertilizer Spreading

Use $\frac{1}{2}$ the application rate suggested on the back of your fertilizer bag.

Cover the area as shown by passing over it in an up and down track as shown, taking into account the spread width of the material being applied.

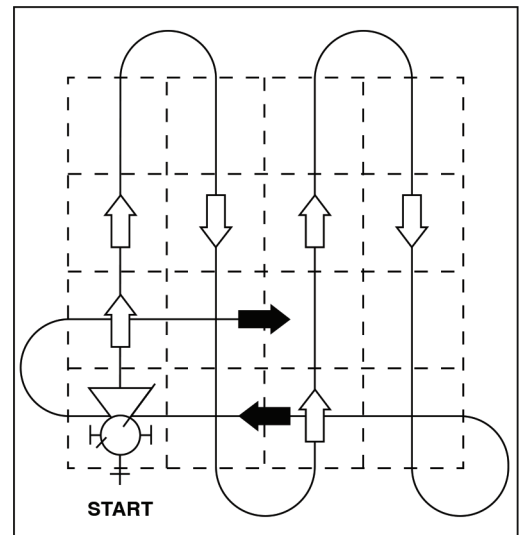


B

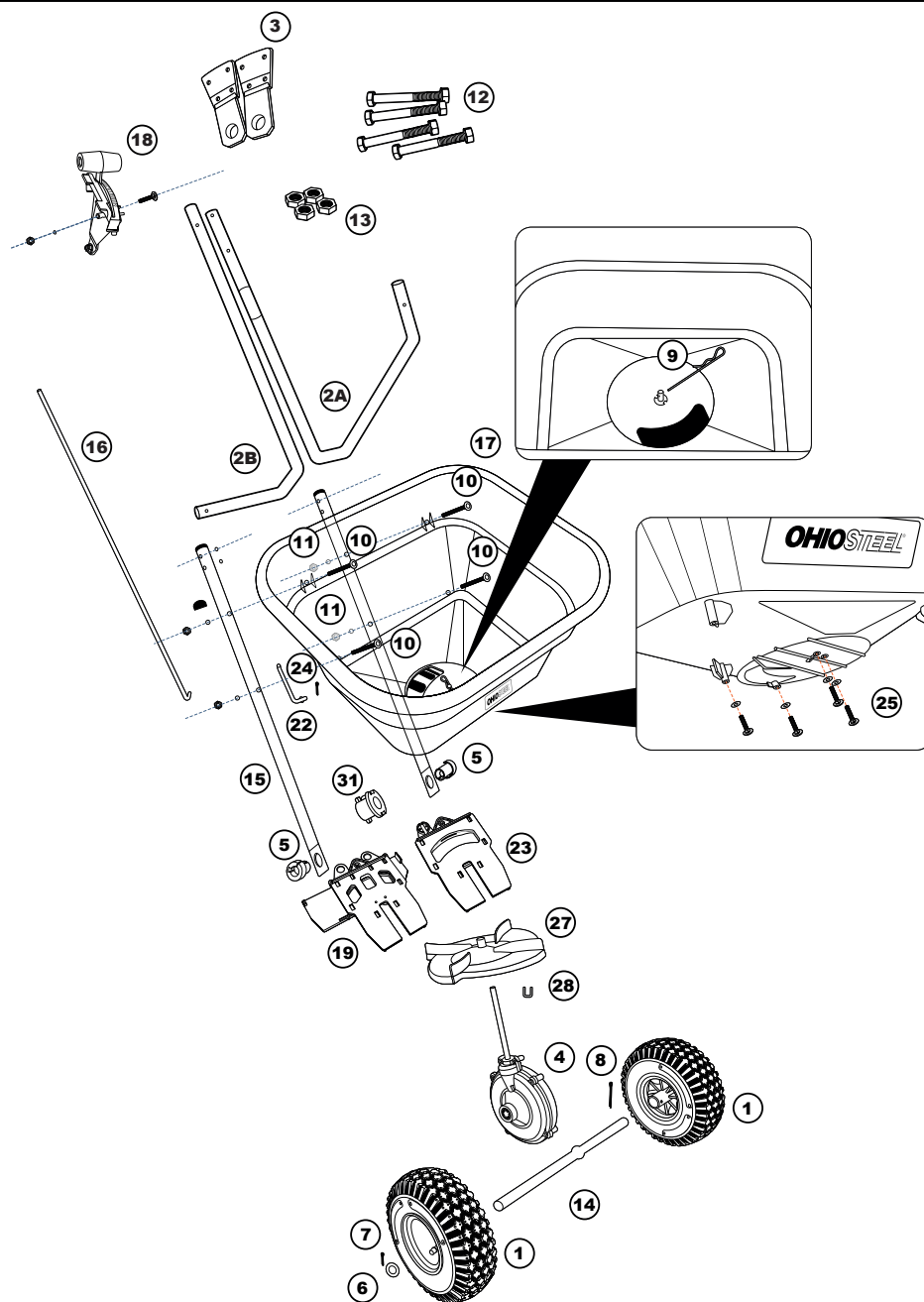
Cross Sectional Fertilizer Spreading

Use $\frac{1}{2}$ the application rate suggested on the back of your fertilizer bag.

Cover the area as shown. Repeating by a second pass in the same manner going across the area as shown in the diagram.



Replacement Parts



NO.	PART NO.	DESCRIPTION	QTY.	NO.	PART NO.	DESCRIPTION	QTY.
1	6005937	Wheel, 4.1 X 3.5-4 X 13mm (Black)	2	14	6005936	Axle, Tube, 7pps80	1
2A	6006101	Draw Bar Right	1	15	6005927	Leg, Frame, Spreader	2
2B	6006102	Draw Bar Left	1	16	6005926	Rod, Upper, 7 Gal	1
3	6006103	Draw Bar Connecting Plates	2	17	6005930	Hopper, Ohio Steel, 7 Gal	1
4	6005934	Assembly, Gearbox, 7pps80	1	18	6005925	Assembly, Control, 7 Gal	1
5	6005935	Bushing, Axle, Spreader	2	19	6005932	Plate, Material, Summer	1
6	6005942	Washer, Flat, M14	1	22	6005929	Rod, Lower, 7pps80	1
7	6005914	Pin, Cotter, 1mm X 10mm	1	23	6005809	Plate, Material, Winter	1
8	6005938	Pin, Cotter, 3.5mm X 23mm	1	24	6006105	R Pin	1
9	6005943	Pin, Agitator, 7pps80	1	25	6005908	Screw, Self Tapping, M4.5 X 18	4
10	6005911	Bolt, Hex, M6 X 60	4	26	6005933	Impeller, Plastic, 7 Gal	1
11	6005917	Nut, Hex, M6	5	27	6005904	Key, U Shaft, Spreader	1
12	6005940	M6 x 40 Bolts	4	28	6005902	Bushing, Hopper, Spreader	1
13	6006104	M6 Lock Nuts	4				

OHIOSTEEL®



7 16504 17107 7

MODEL #7PTS80

PRODUCT MADE IN INDIA

