

OHIOSTEEL®



SCAN HERE
MORE PRODUCT INFO



10PTS100

FERTILIZER AND SALT SPREADER



**READ AND FOLLOW ALL SAFETY RULES AND OPERATING
INSTRUCTIONS BEFORE USING THIS EQUIPMENT**

Safety Rules



This is the safety alert symbol. It is used to alert you to potential personal injury hazards. Obey all safety messages that follow this symbol to avoid possible injury or death.

Read and understand all safety rules and operating instructions before using this product.

Never allow children or untrained persons to operate product.

Operate up and down slopes, never across the face of slopes.

Do not carry passengers on product.

Avoid sudden turns or maneuvers.

Use caution when backing up to prevent personal injury or product damage.

Do not use product on public roadways.

Do not remove warning decals from product.

Check product for worn, loose, or damaged parts before each use. If any damage is present, repair the product before using.

Check product for loose or missing fasteners before each use. Tighten or replace fasteners as needed before using.

Always completely stop product before performing any maintenance.

Wear appropriate protective equipment while using product, including but not limited to closed toe shoes, safety glasses, and gloves.

Watch for traffic when using product near the roadway.

Do not reach into any areas in product with moving or rotating surfaces.

Operate with a reduced speed in rough terrain and hills to prevent tipping or loss of control.

Do not exceed tractor speed of 4 MPH when towing or operating spreader.

Warranty

IF YOU ARE MISSING PARTS DO NOT RETURN TO STORE

Email cs@ohiosteel.com or call 1-800-652-2321, ext. 212

Attach Receipt Here:

Before you call, please email our customer service team at cs@ohiosteel.com with the following:

1. A description of the issue you are experiencing.
2. Photos of the issue that include an overall view and detailed view from multiple angles.
3. If applicable, a short video showing the issue.

Replacement Parts:

You can place your parts order online at ohiosteel.com/partsstore

- You can also reach our Customer Service Department at 1-800-652-2321, ext. 212
- If you are ordering replacement part(s) for your product, please note that some parts are only available as a repair kit.

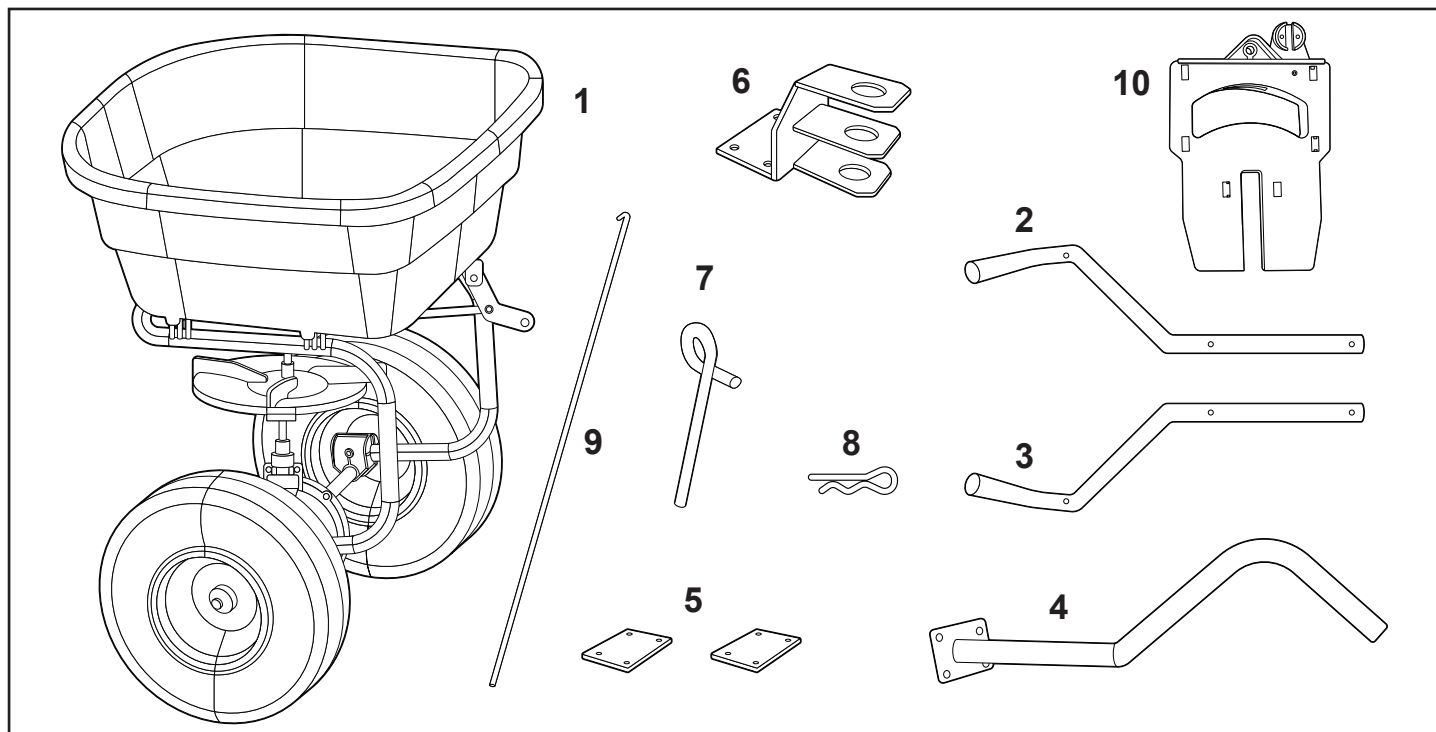
If this product fails due to a defect in material or workmanship within THREE YEARS from the date of purchase, we will at our option, only with receipt of purchase, repair or replace it free of charge. This warranty excludes tires, wheels, brushes and bag, agitator pins and control assembly which are expendable and become worn during normal use.

This warranty does not cover:

- Repairs necessary because of operator abuse or negligence.
- Equipment used for commercial or rental purposes.
- Paint that is worn or faded due to normal use or exposure.
- Product degradation or failure due to corrosion or its effects.

To arrange for product repair visit ohiosteel.com/customer-support and fill out the warranty repair form. You can also call 1-800-652-2321, ext. 212 to speak to our Customer Service Team. This warranty gives you specific legal rights, and you may also have other rights which may vary from state to state. This warranty applies only while this product is in use in the United States.

Carton Contents



PARTS LIST:

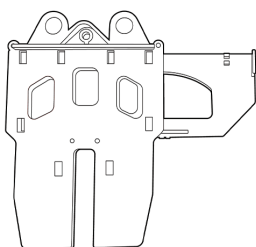
- | | | |
|---------------------|-----------------------|------------------|
| 1. Main Hopper Body | 5. Counter Plate (x2) | 9. Upper Rod |
| 2. Drawbar 1 | 6. Hitch Mount | 10. Winter Plate |
| 3. Drawbar 2 | 7. Tow Pin | |
| 4. Control Arm | 8. Tow Locking Pin | |

TOOLS REQUIRED FOR ASSEMBLY:

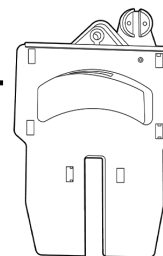
- Phillips Head Screwdriver (small)
- Pliers
- M6 Wrench

Before use, consider what you would like to use your spreader for. When using the spreader to apply fertilizer, use the summer material plate pictured below. When spreading salt, use the winter material plate. Note: This spreader is fitted from the factory with the summer material plate.

FERTILIZER



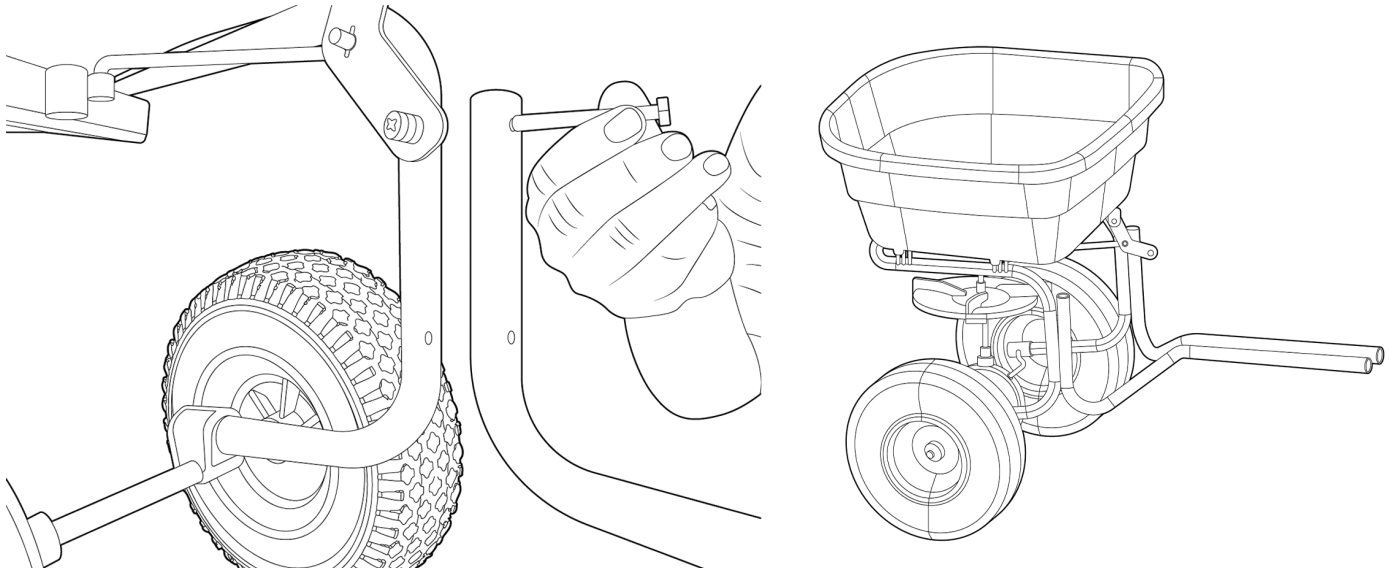
SALT & ICE MELT



Assembly Instructions

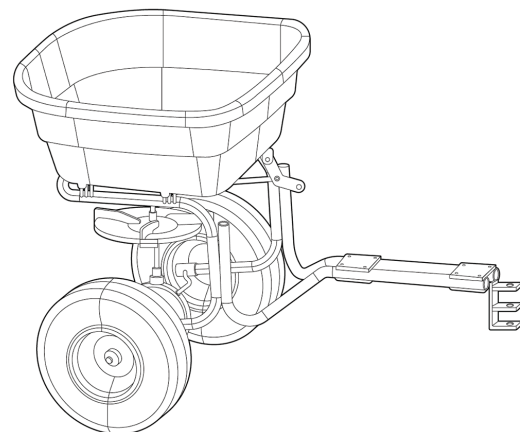
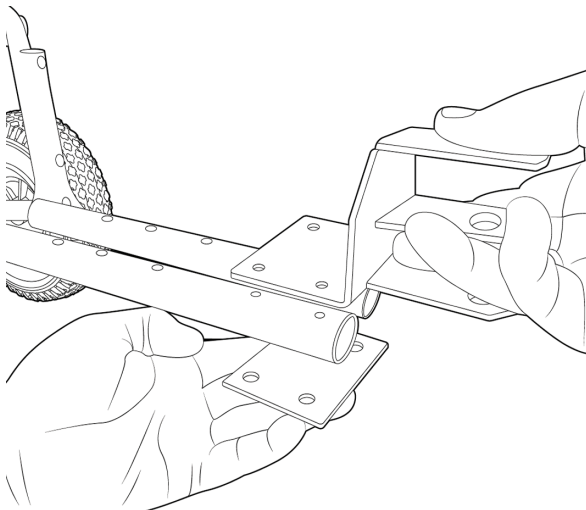
1

Assemble both tow arms (5) to the spreader frame with M6 X 65mm hardware (24). Do not fully tighten.



2

Secure the tow hitch (19) in place using M6 X 45mm hardware (22) and fully tighten. The hitch can be inverted to provide additional adjustability for hitch height (shown below). The optimum position has the impeller parallel to the ground.

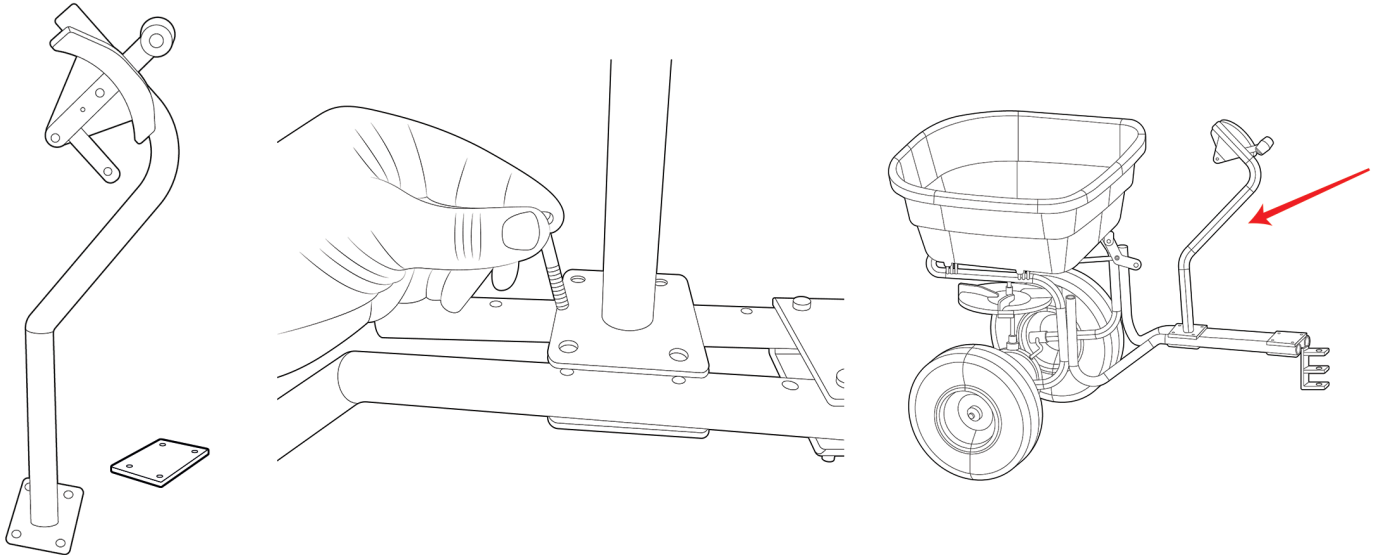


Alternative Hitch Position

Assembly Instructions

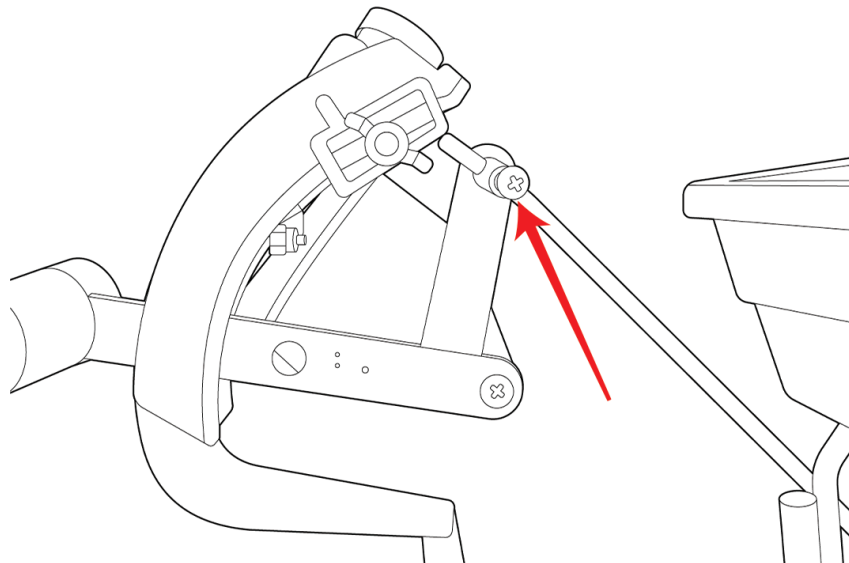
3

Attach the mounting arm and gauge assembly (6 & 7) using M6 X 45mm hardware (21).
NOTE: The positioning of the mounting arm is adjustable to adapt to different tractor units. Choose the optimum hole pattern for your setup.



4

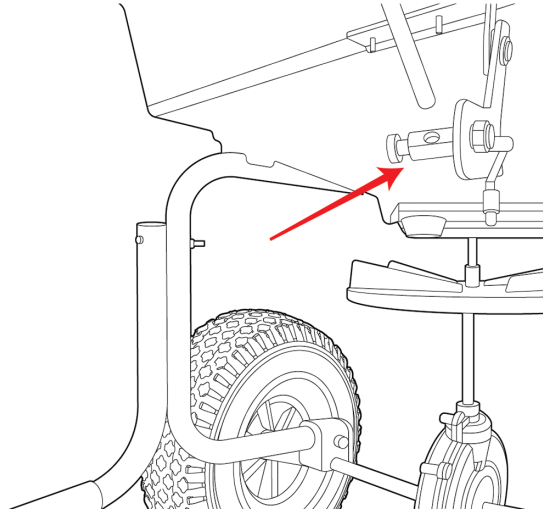
Thread the control rod into the receiving rod stopper on the gauge assembly (3) and into the rod stopper on the pivot bracket as shown in picture 6. Do not fully tighten.



Assembly Instructions

5

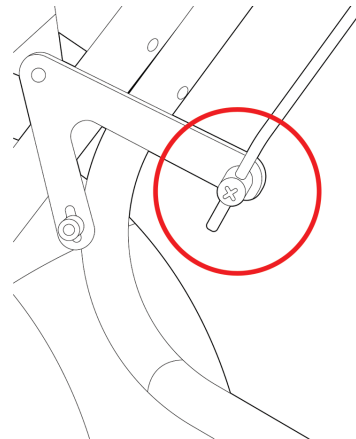
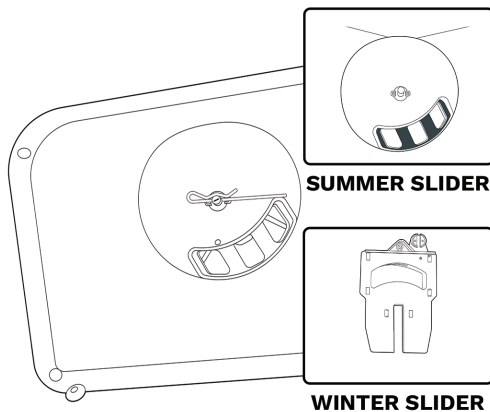
Before tightening the screws at either end of the rod, follow the procedure below.



6

Set the aperture correctly before tightening the control rod. Make sure the application holes in the hopper are fully open and the control unit lever is set at 20.

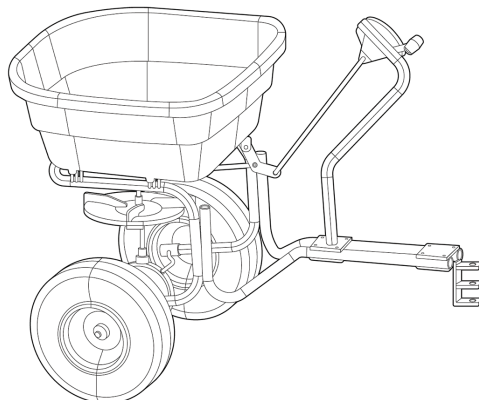
With the application holes fully open and the control lever set at 20 tighten the screw at the pivot bracket end to secure the control rod to the pivot bracket, and then tighten at the control lever end.



7

Fully tighten all hardware. Assembly is now complete.

IMPORTANT: The maximum towing speed when spreading is 4 mph. Never exceed 4 mph when lock hub is engaged in the DRIVE position, as damage to the gearbox will occur.



Operating Instructions

Tow Patterns for the optimum application (For Fertilizer Only)

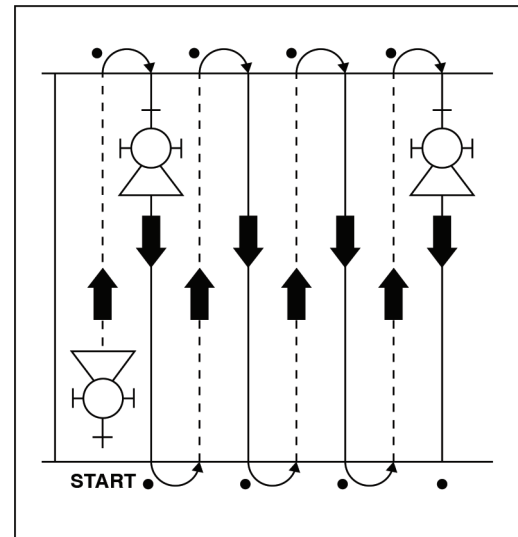
There are two methods of effective spreading, longitudinal fertilizer spreading and cross sectional fertilizer spreading.

A

Single Pass Fertilizer Spreading

Use ½ the application rate suggested on the back of your fertilizer bag.

Cover the area as shown by passing over it in an up and down track as shown, taking into account the spread width of the material being applied.

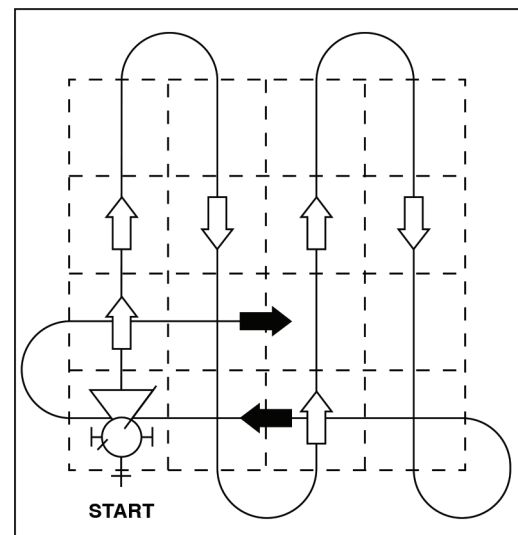


B

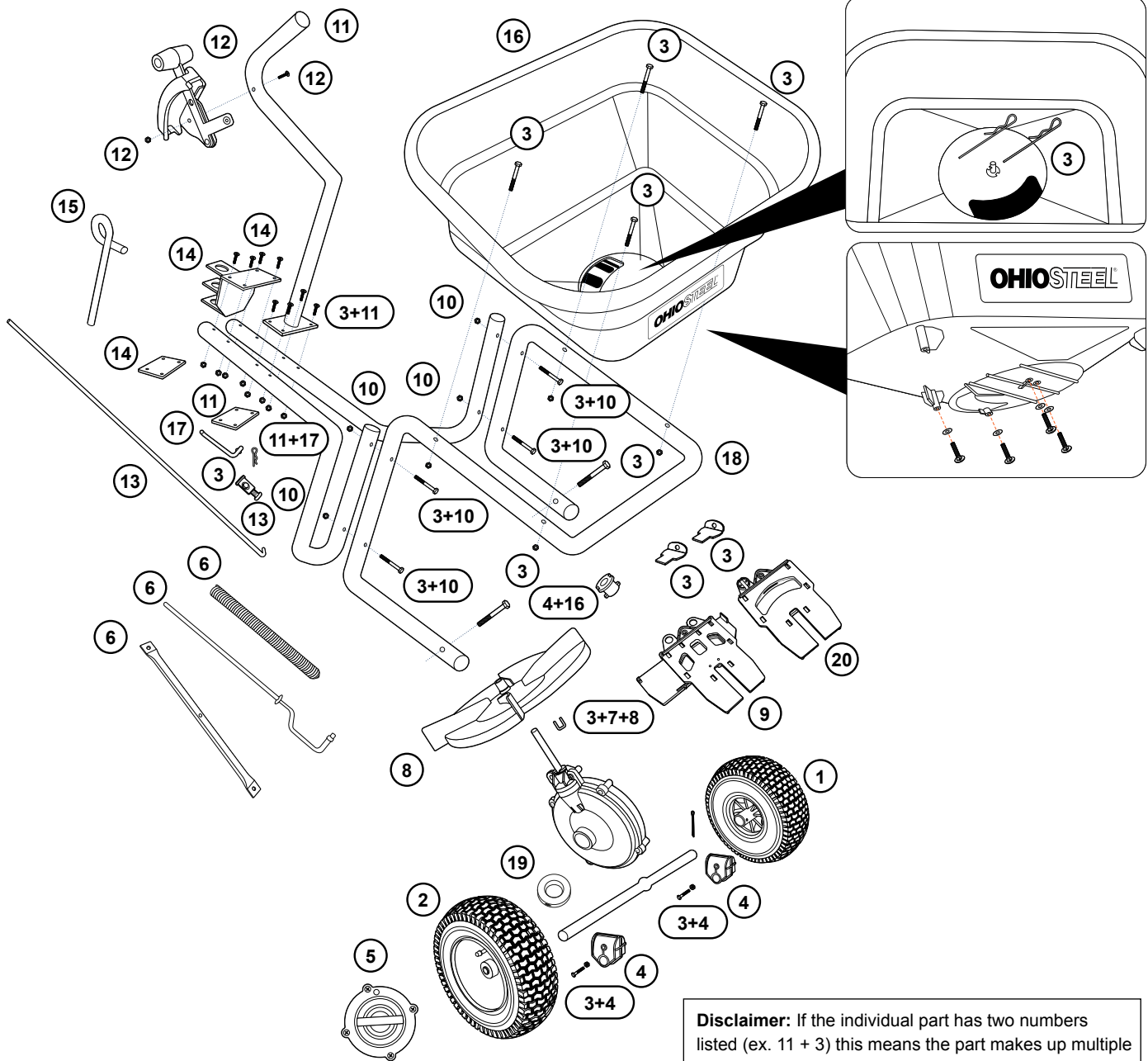
Cross Sectional Fertilizer Spreading

Use ½ the application rate suggested on the back of your fertilizer bag.

Cover the area as shown. Repeating by a second pass in the same manner going across the area as shown in the diagram.



Replacement Parts



Disclaimer: If the individual part has two numbers listed (ex. 11 + 3) this means the part makes up multiple packs. Please refer to our website before ordering.
www.ohiosteel.com/parts-store

NO.	PART NO.	DESCRIPTION	QTY.	NO.	PART NO.	DESCRIPTION	QTY.
1	6006192	WHEEL, 13-5.00 X 6 (CRP047)	1	11	6006198	WELDMENT, ARM, SPREADER (CRP055)	10
2	6006193	WHEEL, 13-5.00 X 6, HUB (C2515T)	1	12	6006199	ASSEMBLY, CONTROL, 10PTS100 (CRP056)	3
3	6006194	PARTS, HW BAG, 10PTS100 (CRP049)	70	13	6006200	ROD, UPPER, 10 GAL (CRP057)	2
4	6006180	PARTS, BUSHINGS, 10 GAL (CRP034)	9	14	6006201	WELDMENT, HITCH, 10PTS100 (CRP058)	9
5	6006195	KIT, HUB, SPREADER (CRP051)	5	15	6006202	PIN, HITCH, SPREADER (CRP059)	2
6	6006196	KIT, CROSS, SPREADER (CRP052)	5	16	6006203	PARTS, HOPPER, 10PTS100 (CRP037)	5
7	6006178	PARTS, GEARBOX & PIN, 10 GAL (CRP032)	2	17	6006176	PARTS, ROD & PIN, 10 GAL (CRP030)	2
8	6006177	PARTS, IMPELLER & PIN, 10 GAL (CRP031)	2	18	6005894	SUPPORT, HOPPER, SPREADER (CR3010)	1
9	6005907	PLATE, MATERIAL, SUMMER (CRP9005)	5	19	6006204	AXLE, SPREADER, 10PTS100 (CRP060)	2
10	6006197	TUBE, DRAWBAR, SPREADER (CRP053)	10	20	6005909	PLATE, MATERIAL, WINTER (C2001)	1

OHIOSTEEL[®]



7 16504 18110 6

MODEL #10PTS100

PRODUCT MADE IN INDIA

